

Architectural Designs ...selling quality house plans for over 30 years.

Plan W35221GH: King of the Hill



House plans are Copyright © 2009 by our architects and designers.

- Feel like the king of the hill in your own mountain lodge with two story windows geared to take advantage of your views.
- On the main level, lots of open decks provide space to sit and enjoy the views and the sun.
- The focal point of the great room is the warm fireplace where you can relax and enjoy the views from the two-story windows.
- Windows surround the dining room with light and close proximity to the kitchen makes serving a breeze.
- Two walk-in closets and a spa bath pamper the owners who also have their own access to the deck.
- On the lower level, a family room with sitting area and wet bar will be your favorite place to hang out. Another bedroom and bath provides room for family or guests.
- Related Plan: Need a side-entry garage? See house plan 35042GH.

Style: Metric, Mountain, Vacation

Total Living Area: 3304

Main Flr.: 1652

Lower Level: 1652

Total Square Feet: 3,828 sq. ft.

Attached Garage: 2 Car, 524 sq. ft.

Bedrooms: 2

Full Bathrooms: 3

Width: 65'

Depth: 56'6"

Maximum Ridge Height: 22'3"

Exterior Walls: ICF

Ceiling Height:

Main Floor: 9'

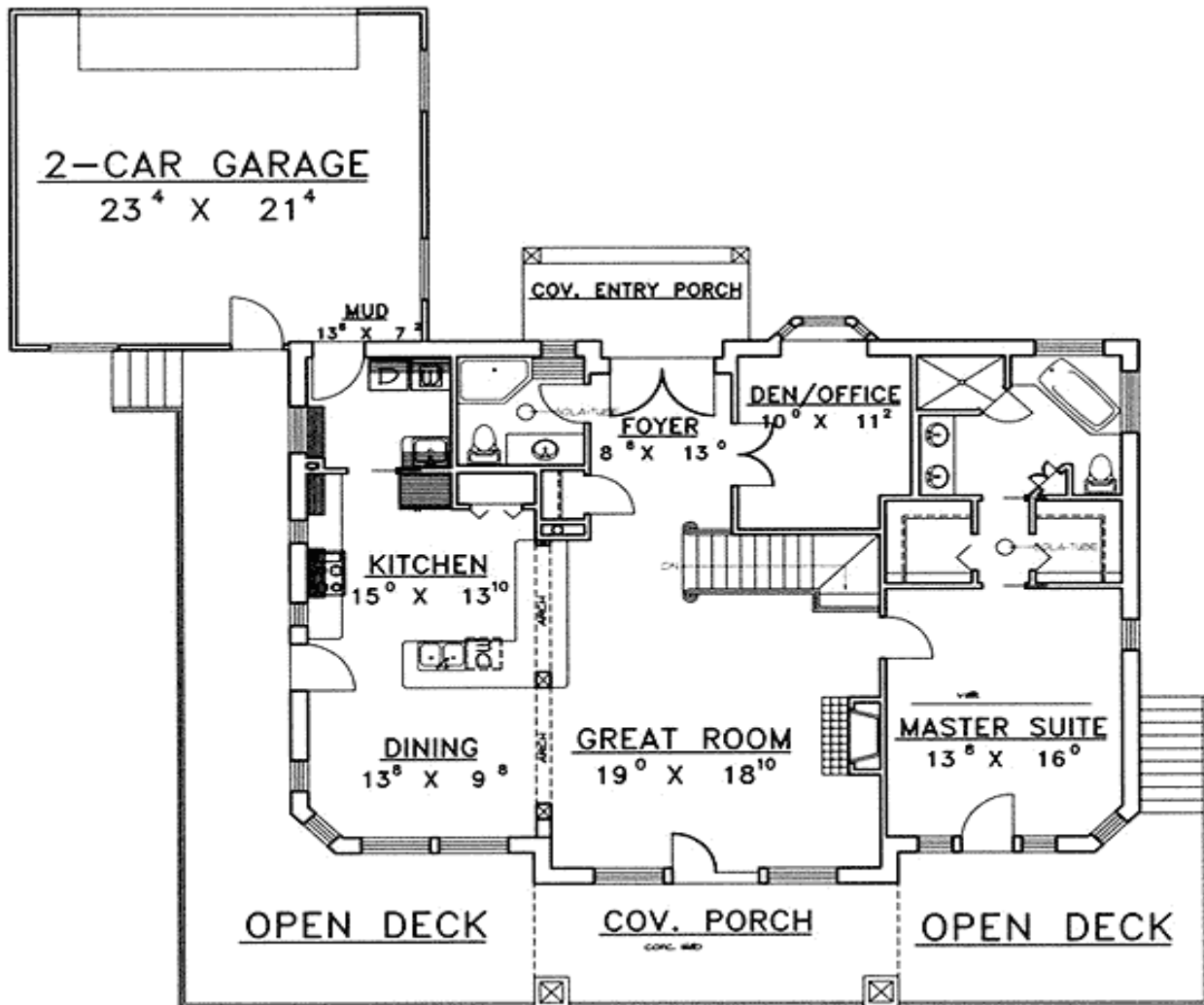
Lower Floor: 9'

Standard Foundations: Daylight, Walkout

Special Features: Den-Office-Library-Study, 1st Floor Master Suite, CAD Available, Sloping Lot, PDF

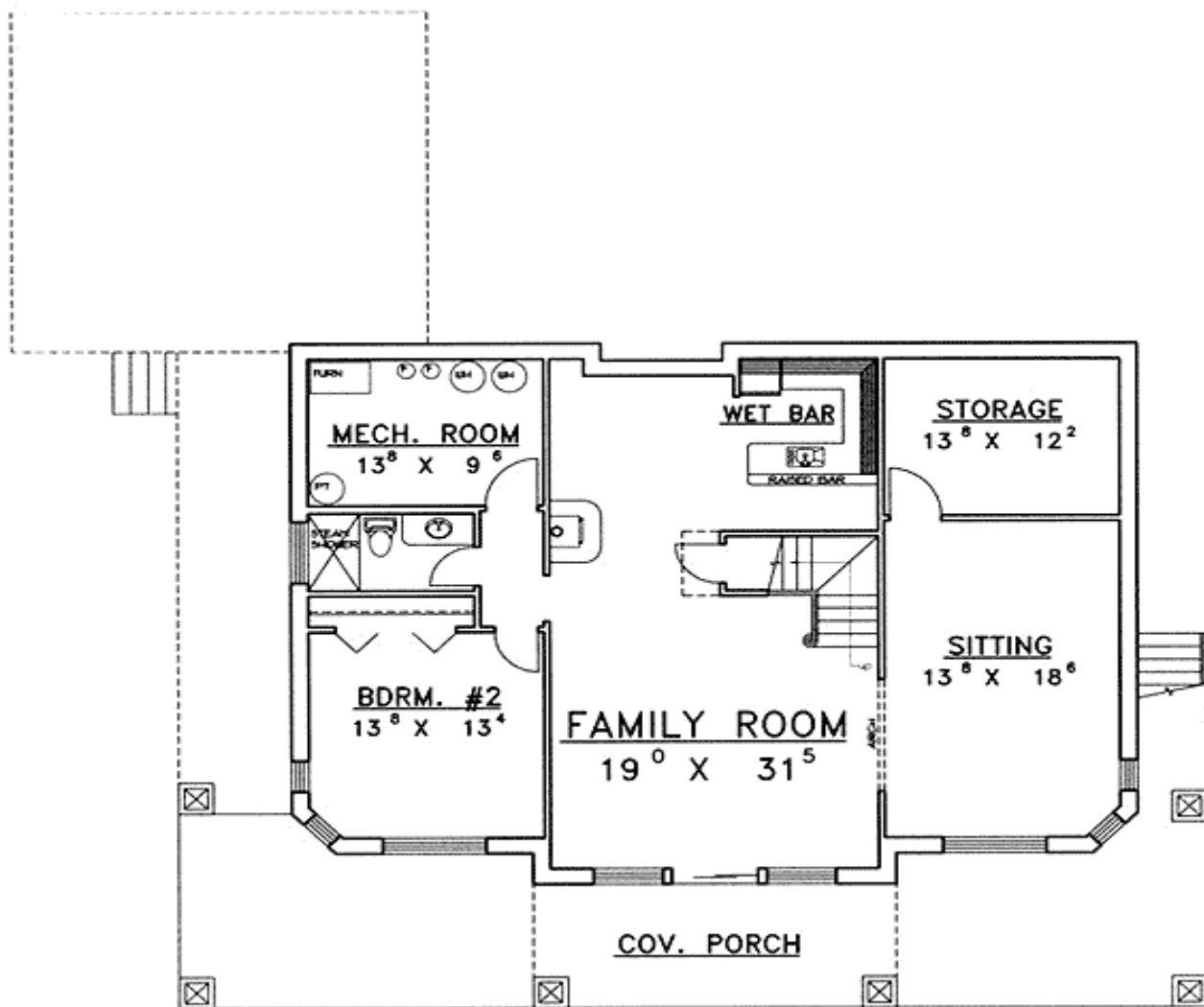
Five Sets	Eight Sets	Reproducible	PDF File	CAD
\$725	\$820	\$750	\$900	\$900

Main Level



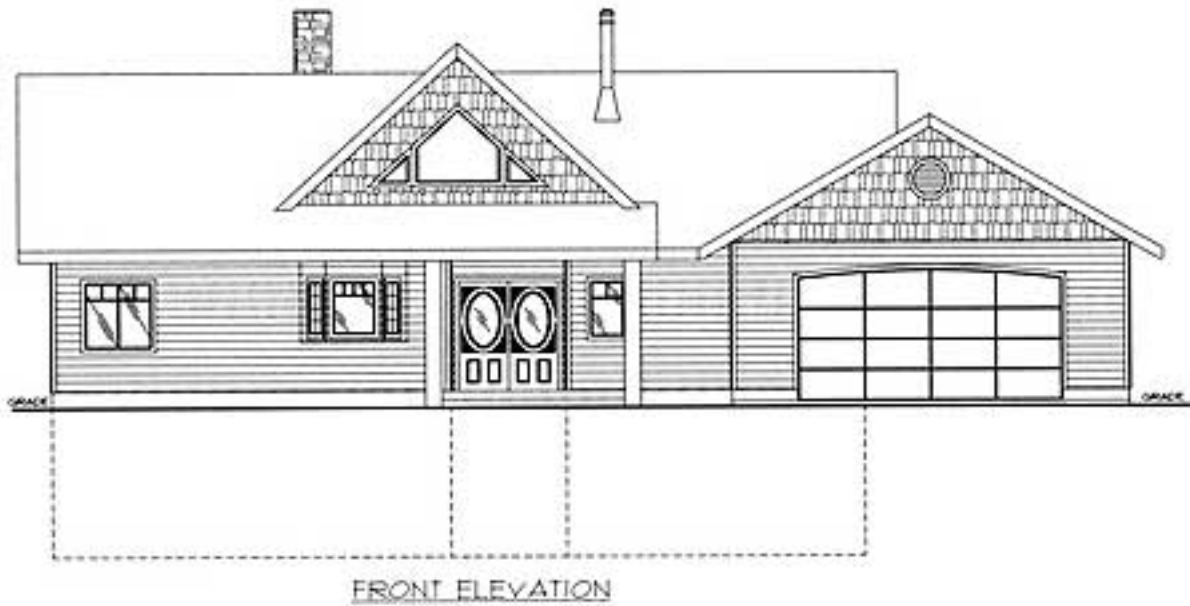
MAIN LEVEL FLOOR PLAN

Lower Level

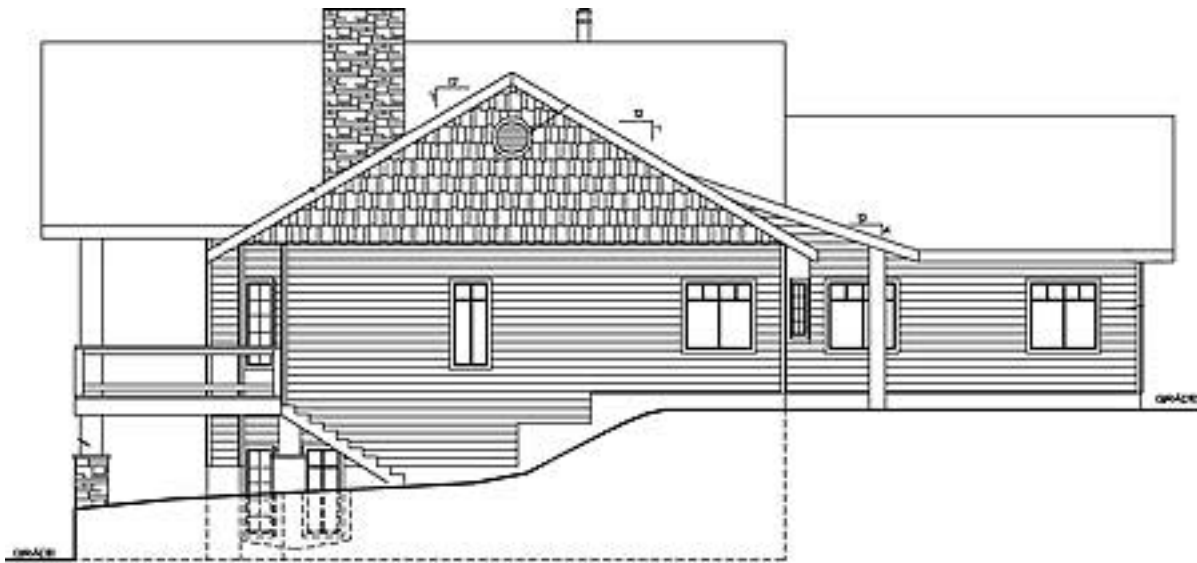


DAYLIGHT BASEMENT PLAN

Elevation #2

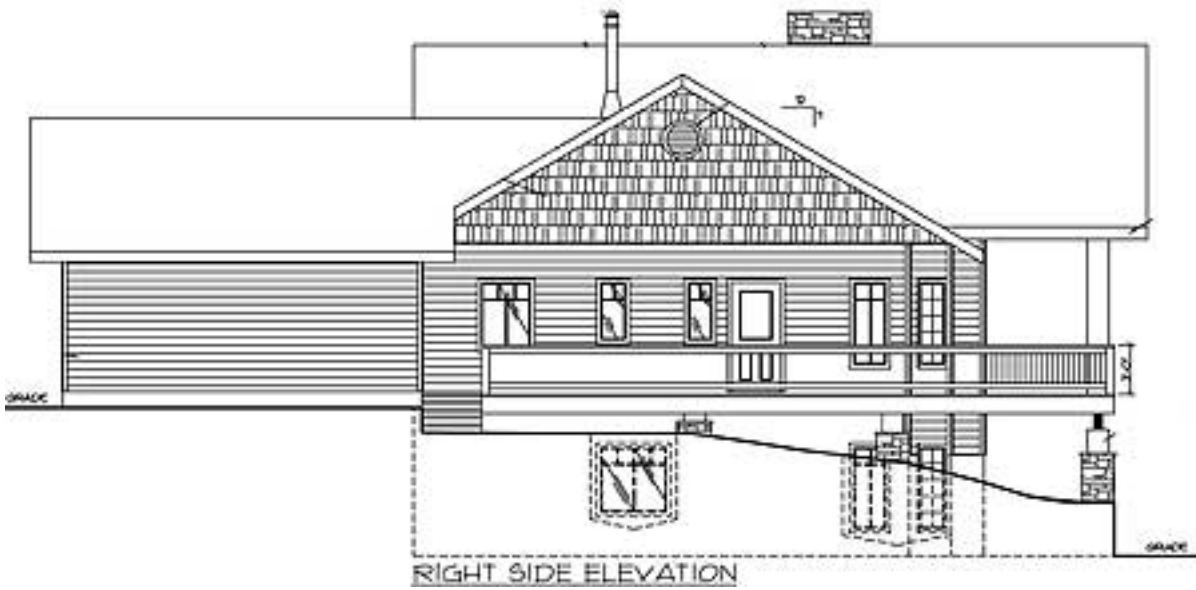


Left Side



LEFT SIDE ELEVATION

Right Side



Rear View



REAR ELEVATION