

# Architectural Designs ...selling quality house plans for over 30 years.

Plan W21677DR: Classic Country Farmhouse Plan



House plans are Copyright © 2009 by our architects and designers.

- With a wrap-around porch on the exterior, this country farmhouse plan features an open living area inside. As an added bonus, it comes in multiple elevations and reverse reversions.
- A see-through fireplace can be enjoyed from either the bayed living room or the dining room.
- The kitchen is well thought out and includes a pantry, angled eat-at island and an adjacent nook. An angled door leads to a back deck perfect for dining "al fresco."
- Upstairs, the master suite includes a walk-in closet and a private bathroom with a corner garden tub. The two family bedrooms share the other full bath.
- Stairs lead to the bonus room over the two-car garage, completing the upper level.
- Related Plans: Building in reverse? See house plan 21173DR (two-car side-entry garage).
- For alternate elevations, see house plan 21570DR and 2101DR.

Style: Canadian, Country, Farmhouse, Metric

Total Living Area: 1754

Main Flr.: 874

2nd Flr.: 880

Basement Unfinished: 874 sq. ft.

Bonus: 421 sq. ft.

Total Square Feet: 3,577 sq. ft.

Attached Garage: 2 Car, 528 sq. ft.

Bedrooms: 3

Full Bathrooms: 2

Half Bathrooms: 1

Width: 48'

Depth: 40'

Maximum Ridge Height: 29'2"

Exterior Walls: 2x6

Ceiling Height:

    Main Floor: 9'

    2nd Floor: 8'

Standard Foundations: Basement

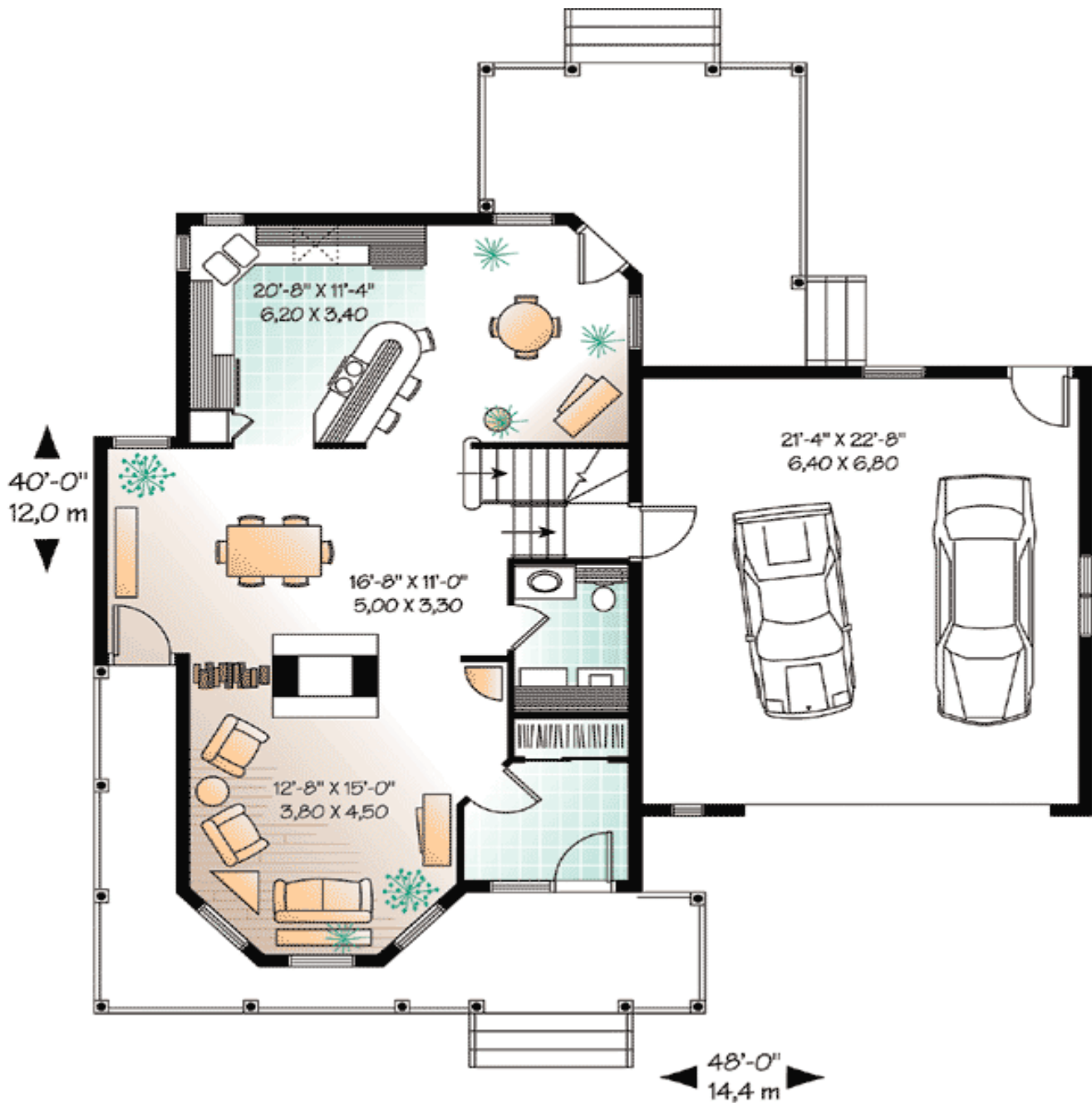
Alternate Foundations: Slab (\$150), Crawl (\$150)

Special Features: Narrow Lot, Photo Gallery, Bonus Room, PDF, CAD Available

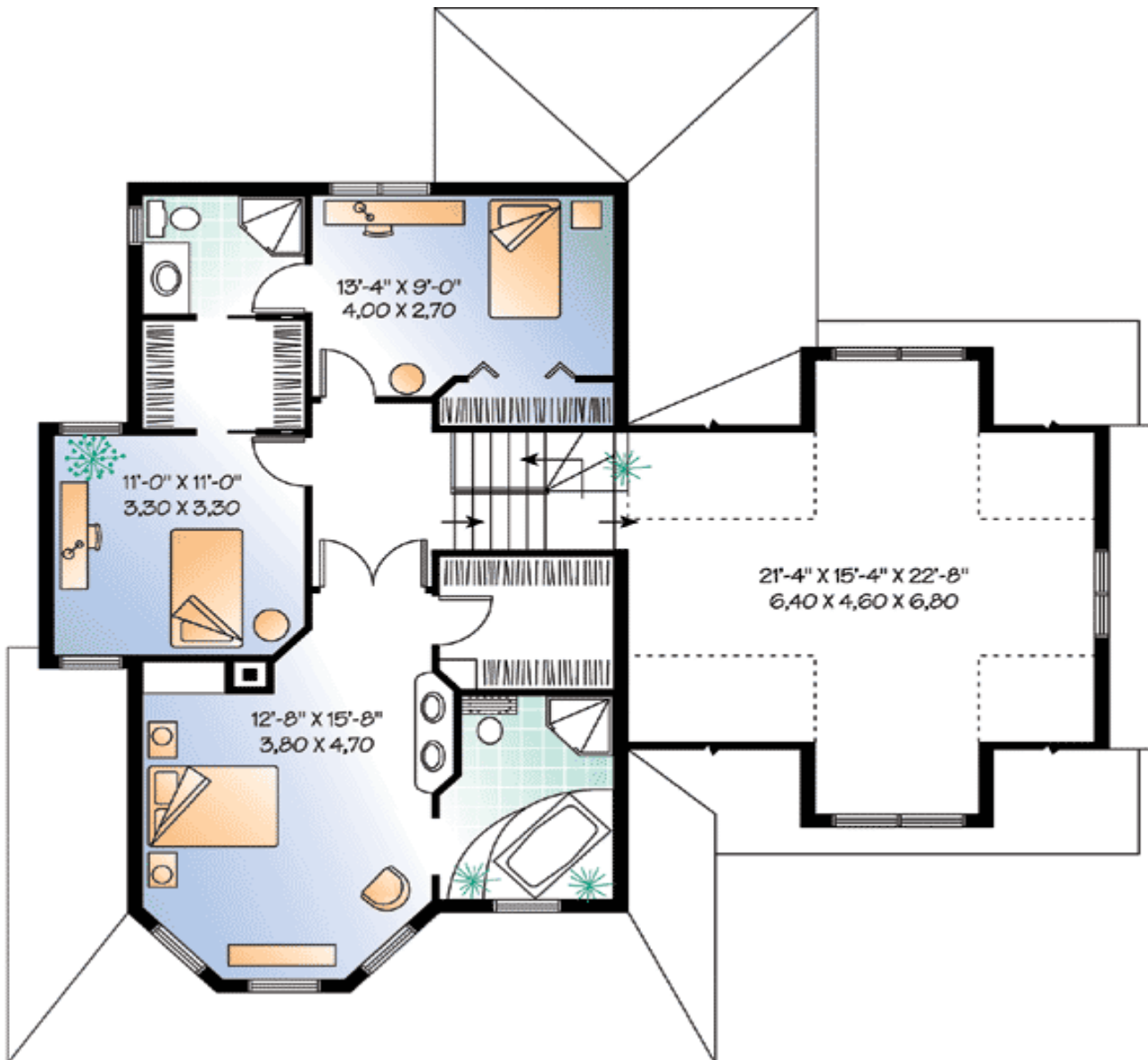
One Set	Five Sets	Eight Sets	Reproducible	PDF File	CAD
\$795	\$945	\$1,005	\$945	\$945	\$1,245

# Architectural Designs ...selling quality house plans for over 30 years.

Main Level



2nd Level



# Architectural Designs ...selling quality house plans for over 30 years.

Elevation #2



Rear View

