

Plan W8426JH: Split-Bedroom Comfort



House plans are Copyright © 2009 by our architects and designers.

- Two grand porches and a terrace frame the front and rear of this beautiful home designed for comfortable living.
- Inside, a well-planned open interior has as its focal point a large living room with an entertainment center bordering the fireplace and a window wall overlooking the terrace.
- A future staircase leads to optional bonus space upstairs. Stairs in the rear-facing garage lead to storage space.
- The large kitchen has lots of counter space and a central island and is open to the bayed eating nook.
- The split-bedroom plan sites the master suite on one side of the house. Large twin walk-in closets and a master bath with its twin vanities, garden tub and separate shower complete this area.
- Two secondary bedrooms share a bath. A study in the front can be used as a fourth bedroom.
- Related Plans: Get a side-entry garage with house plan 8483JH.
- Get a 4th bedroom with house plan 8487JH.

Style: Southern, Traditional

Total Living Area: 2981

Main Flr.: 2981

Front Porch: 353 sq. ft.

Rear Porch: 284 sq. ft.

Total Square Feet: 4,624 sq. ft.

Attached Garage: 3 Car, 1,006 sq. ft.

Bedrooms: 3

Full Bathrooms: 3

Half Bathrooms: 1

Width: 85'10"

Depth: 81'5"

Maximum Ridge Height: 25'3"

Exterior Walls: 2x4

Ceiling Height:

Main Floor: 9'

Standard Foundations: Slab, Crawl

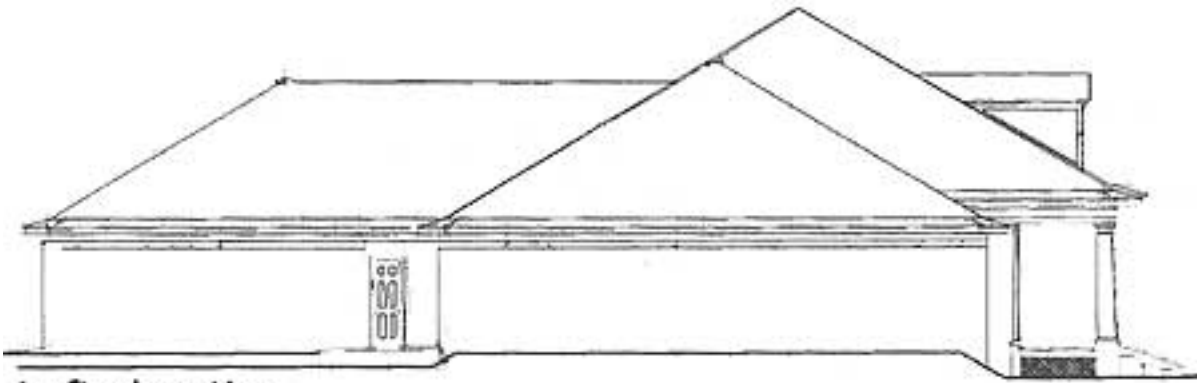
Special Features: CAD Available, 1st Floor Master Suite, PDF, Split Bedrooms

One Set	Five Sets	Eight Sets	Reproducible	PDF File
\$560	\$600	\$650	\$885	\$1,410

Main Level

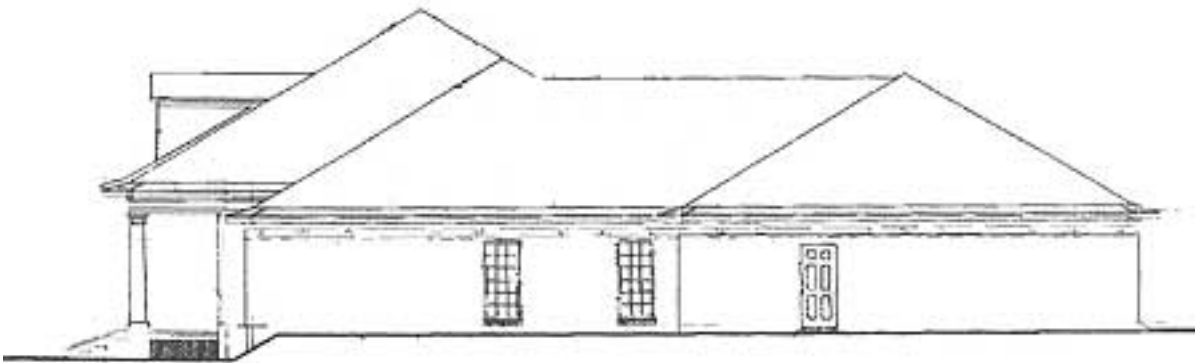


Left Side



Left elevation

Right Side



Right elevation

Rear View

