

Plan W21078DR: Stunning Beach or Mountain Views



House plans are Copyright © 2009 by our architects and designers.

- Family and guests are able to enjoy the great views from any room in this contemporary vacation house plan through a multitude of full length windows.
- The wrap-around deck is accessible from both the kitchen and the family room.
- A soaring ceiling and a fireplace enhance the light-filled sunken living room. The adjacent dining room and open access kitchen create a large living area.
- The first floor master bedroom has a walk-in closet and a full bathroom.
- Two additional bedrooms, a family room and a full bathroom comprise the second floor. A mezzanine opens to the family room below.
- The full walk-out basement and the garage provide storage and expandable living space.
- Related Plan: For an alternate exterior (shown in two color schemes), see house plan 21185DR which comes with an unfinished lower level.

Style: Canadian, Contemporary, Metric, Northwest, Vacation

Total Living Area: 1737

Main Flr.: 1010

2nd Flr.: 727

Total Square Feet: 2,214 sq. ft.

Attached Garage: 1 Car, 477 sq. ft.

Bedrooms: 3

Full Bathrooms: 2

Width: 34'

Depth: 34'

Maximum Ridge Height: 24'

Exterior Walls: 2x6

Ceiling Height:

Main Floor: 8'

2nd Floor: 8'

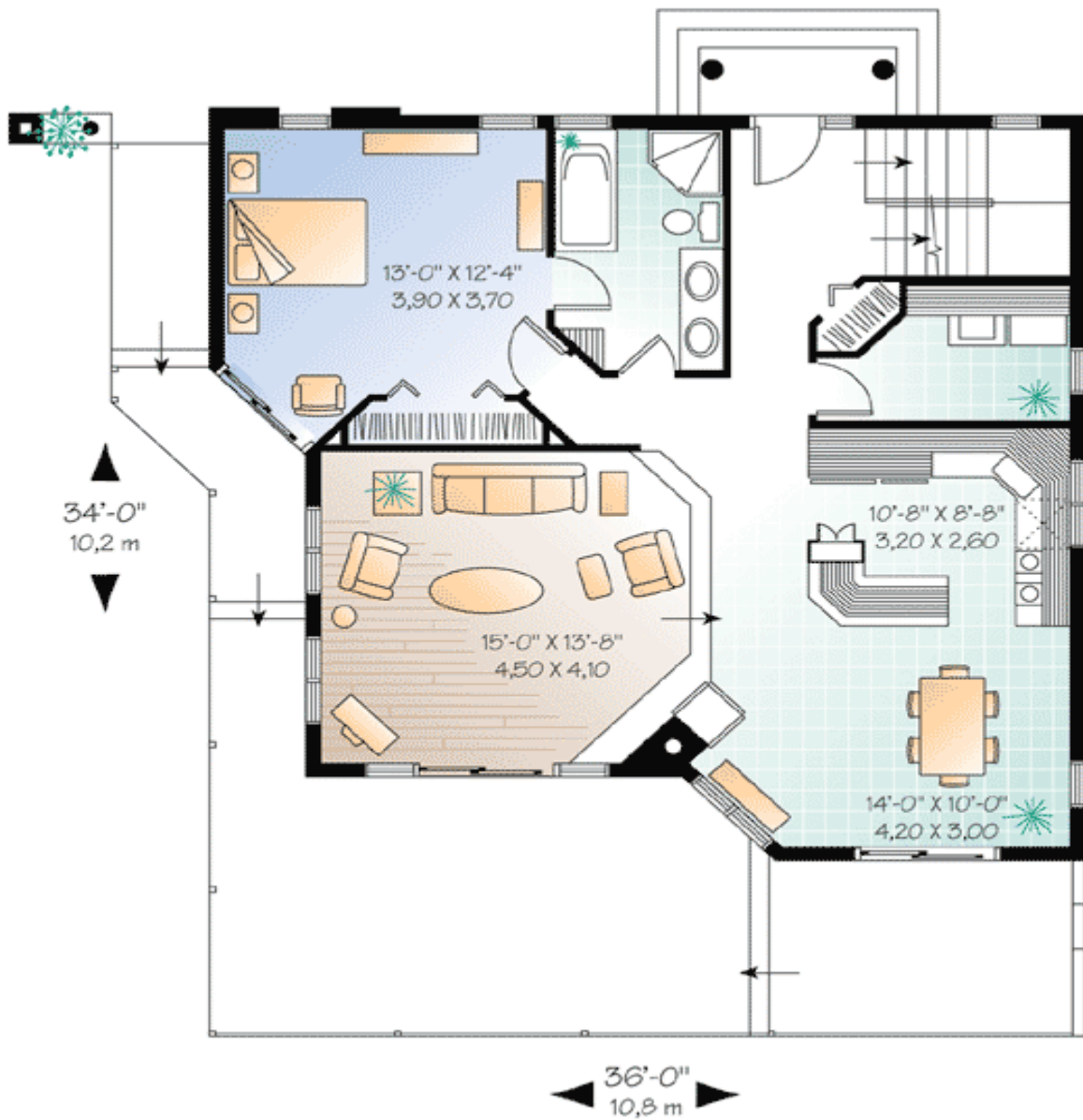
Standard Foundations: Walkout

Alternate Foundations: Slab (\$295), Basement (\$295), Crawl (\$295)

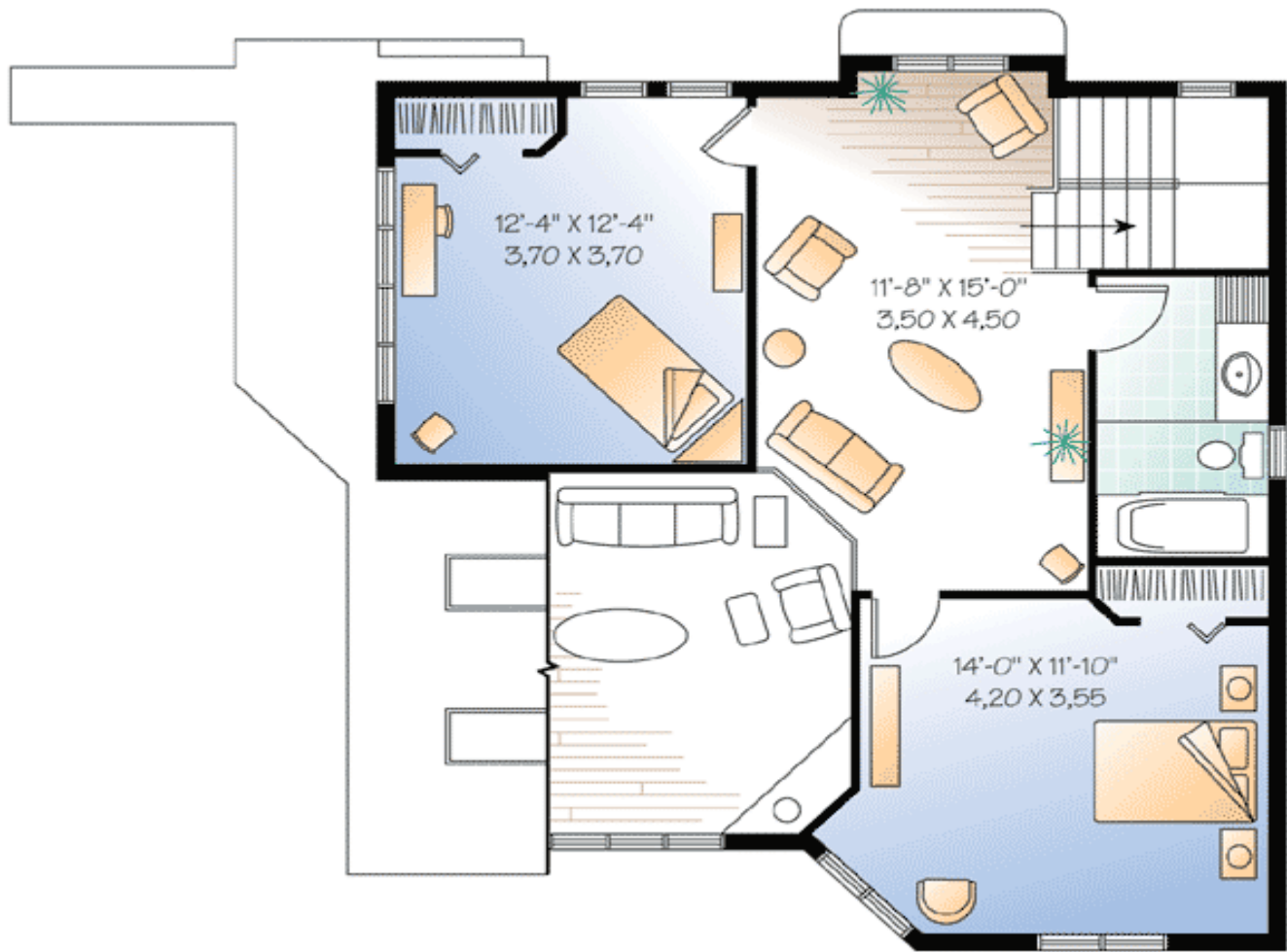
Special Features: Sloping Lot, Narrow Lot, PDF, CAD Available

One Set	Five Sets	Eight Sets	Reproducible	PDF File	CAD
\$599	\$639	\$669	\$849	\$849	\$1,545

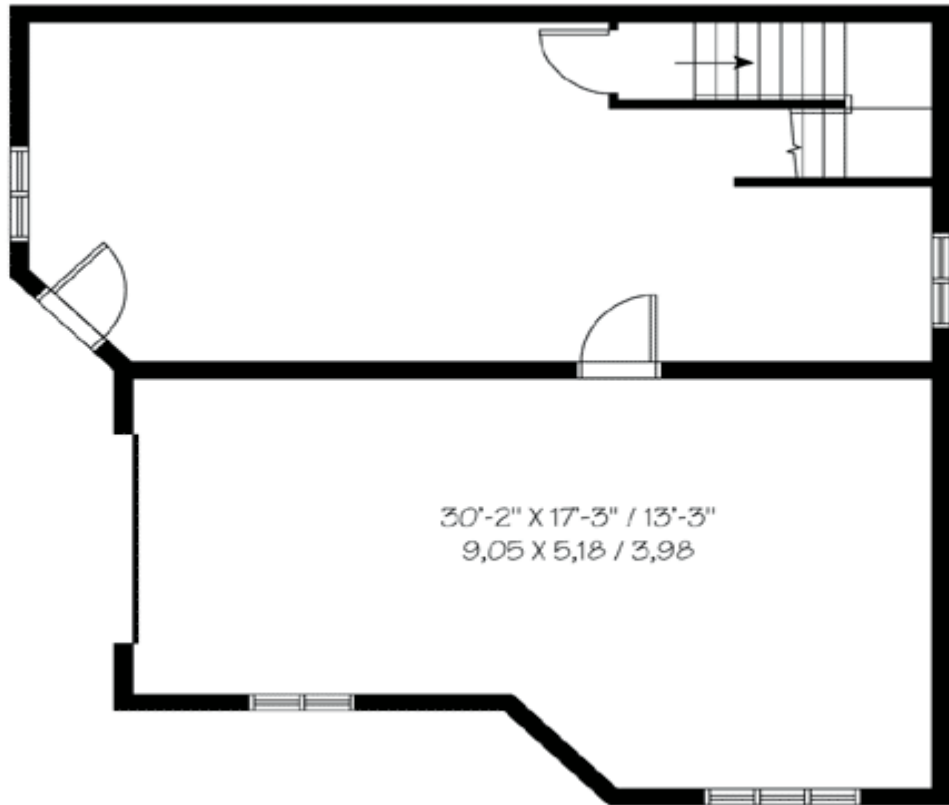
## Main Level



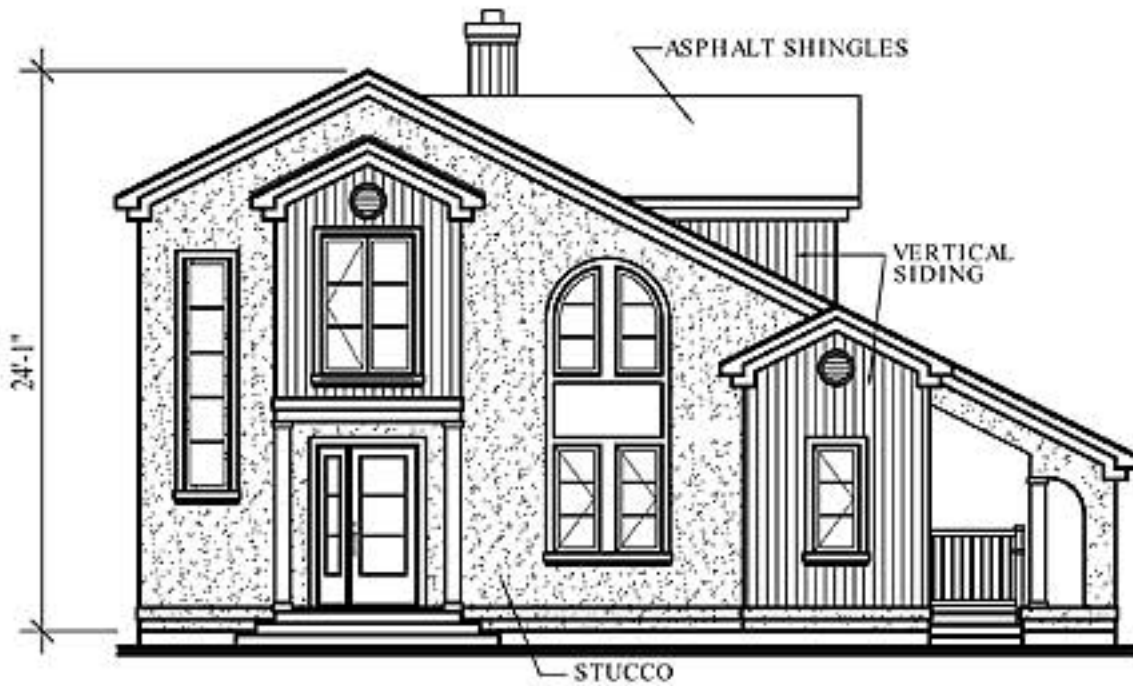
## 2nd Level



Lower Level



Elevation #2



Rear View

