

Plan W35156GH: Commanding Views From Twin Covered Decks



House plans are Copyright © 2009 by our architects and designers.

- Enjoy commanding views from a pair of vaulted covered decks and inside from the two-story great room in this exciting vacation house plan. The decks provide plenty of space to sit and enjoy the views.
- The focal point of the great room is the warm fireplace where you can relax and enjoy the views from the two-story windows. A loft with storage above shares these views.
- Windows surround the dining room with light and close proximity to the kitchen makes serving a breeze. A door gives access to the covered side deck.
- A large walk-in closet and a spa bath pamper the owners who also have their own access to the deck.
- A guest room by the entry can double as a den or study. A pantry and large utility room is right off the garage.
- The lower level offers storage and expansion possibilities.
- Related Plans: Get a finished lower level and an angled garage with house plan 35186GH.

Style: Contemporary, Metric, Mountain, Northwest

Total Living Area: 4104

Main Flr.: 1890

2nd Flr.: 324

Lower Level: 1890

Total Square Feet: 5,051 sq. ft.

Attached Garage: 3 Car, 947 sq. ft.

Bedrooms: 2

Full Bathrooms: 2

Width: 67'6"

Depth: 89'8"

Maximum Ridge Height: 25'7"

Exterior Walls: 2x6

Ceiling Height:

Main Floor: 9'

Lower Floor: 9'

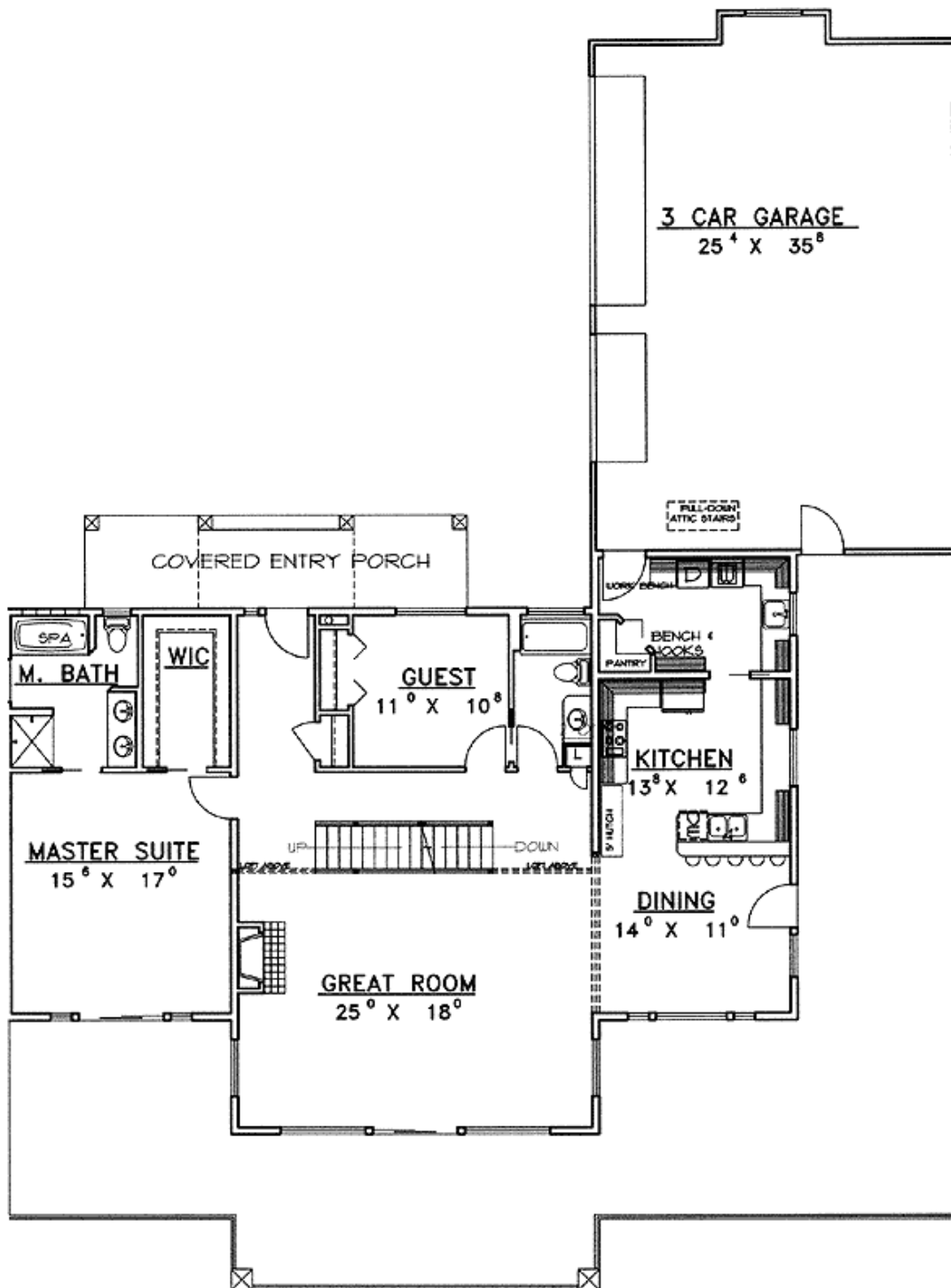
Other: 4'-11'1" 2nd Floor

Standard Foundations: Daylight, Basement

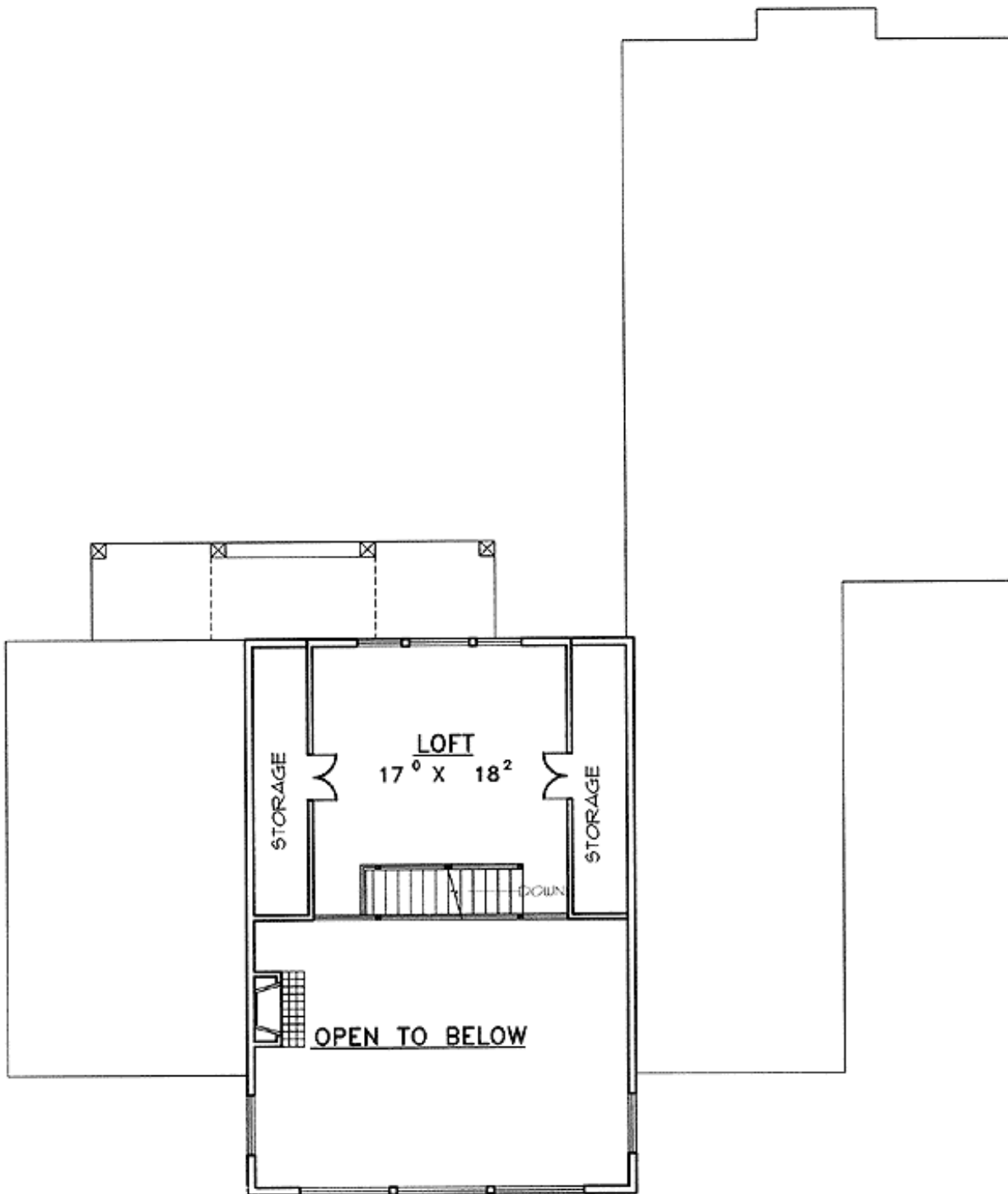
Special Features: 1st Floor Master Suite, Loft, Wrap Around Porch, Sloping Lot, PDF, CAD Available

Five Sets	Eight Sets	Reproducible	PDF File	CAD
\$825	\$930	\$850	\$950	\$950

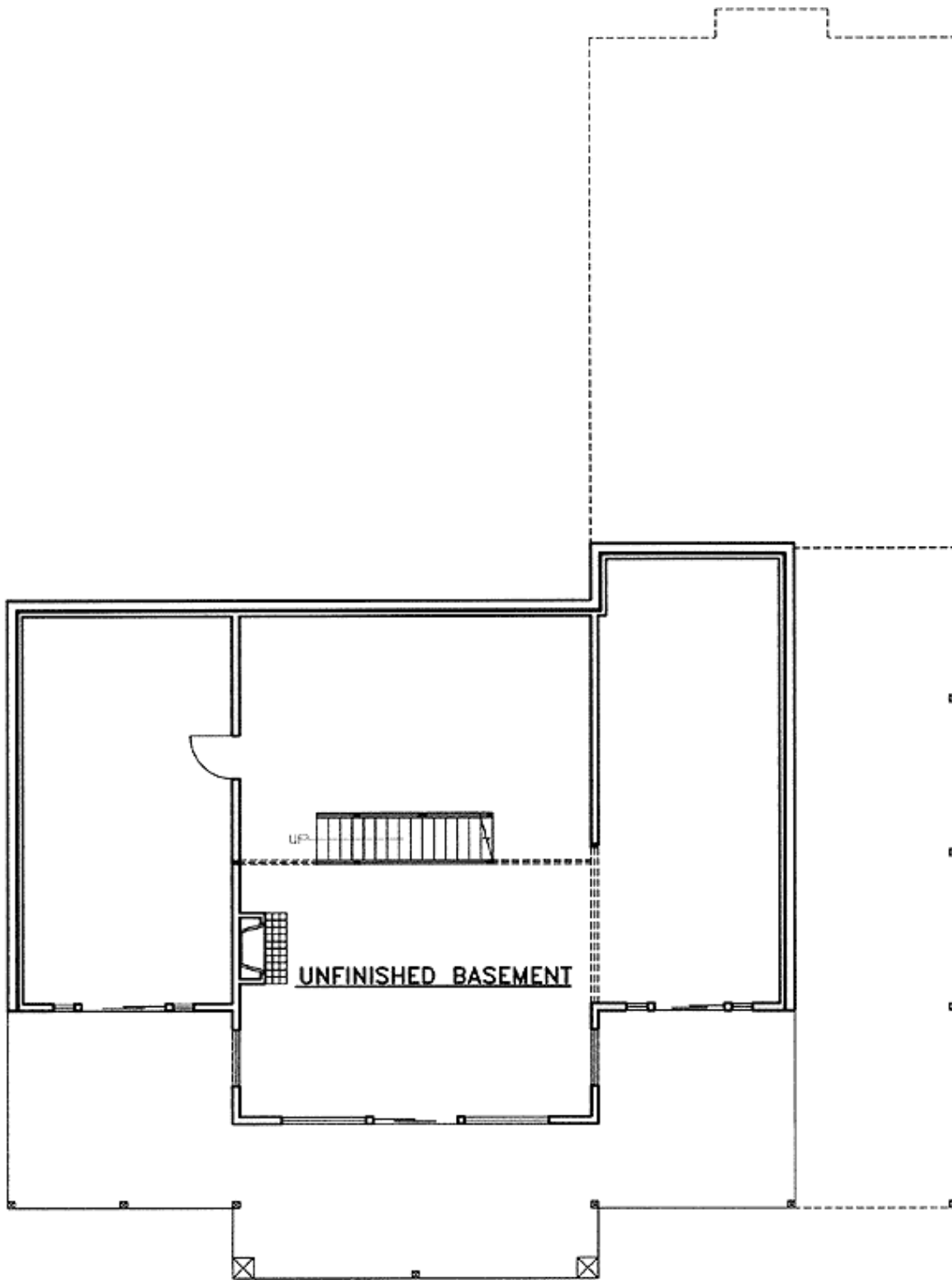
Main Level



2nd Level



Lower Level



Elevation #2



Left Side



Right Side



Rear View

