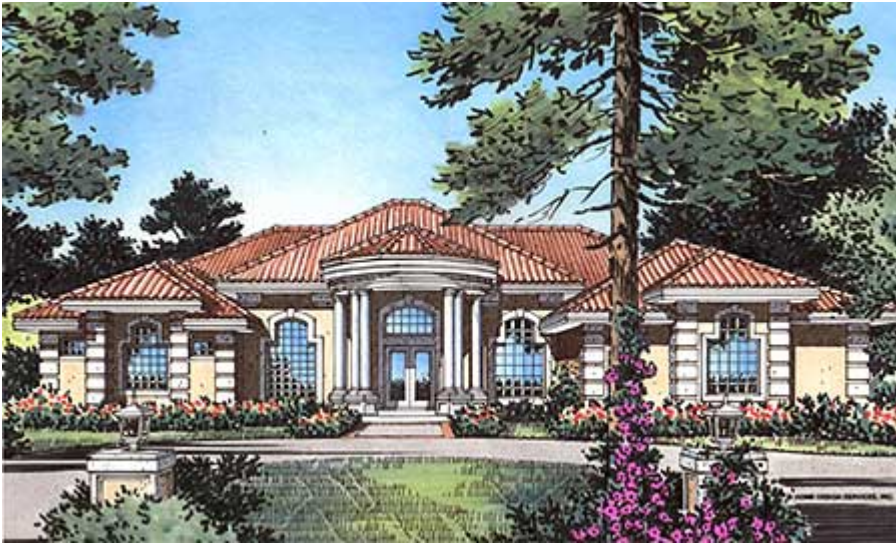


Plan W6316HD: A See-Through Fireplace



House plans are Copyright © 2009 by our architects and designers.

- A wonderful curved portico supported by columns leads into this impressive contemporary design.
- Tile work and curved, high-volume ceilings distinguish the formal living and dining rooms. A high ceiling is also found in the den, complete with a private bathroom.
- In the magnificent master suite, a see-through fireplace separates the sleeping area from the bayed sitting area. The suite also includes an exercise area with wet bar. The lavish master bath features his and her vanities and walk-in closets, a sumptuous soaking tub, island shower and commode closet.
- The family wing offers a powder room with entry to the covered patio in back, a huge kitchen with a central cooktop island and walk-in pantry, a glass-walled nook and a grand vaulted family room with fireplace and media wall. Note the summer kitchen on the patio.
- Two family bedrooms each access a compartmented bath.
- Related Plan: For a smaller version, see house plan 63200HD (3,075 sq. ft.)

Style: Florida, Mediterranean

Total Living Area: 3556

Main Flr.: 3556

Covered Patio: 619 sq. ft.

Total Square Feet: 4,984 sq. ft.

Attached Garage: 3 Car, 809 sq. ft.

Bedrooms: 4

Full Bathrooms: 3

Half Bathrooms: 1

Width: 85'

Depth: 85'

Maximum Ridge Height: 26'6"

Exterior Walls: 2x4, 2x6 & Block

Ceiling Height:

Main Floor: 10'

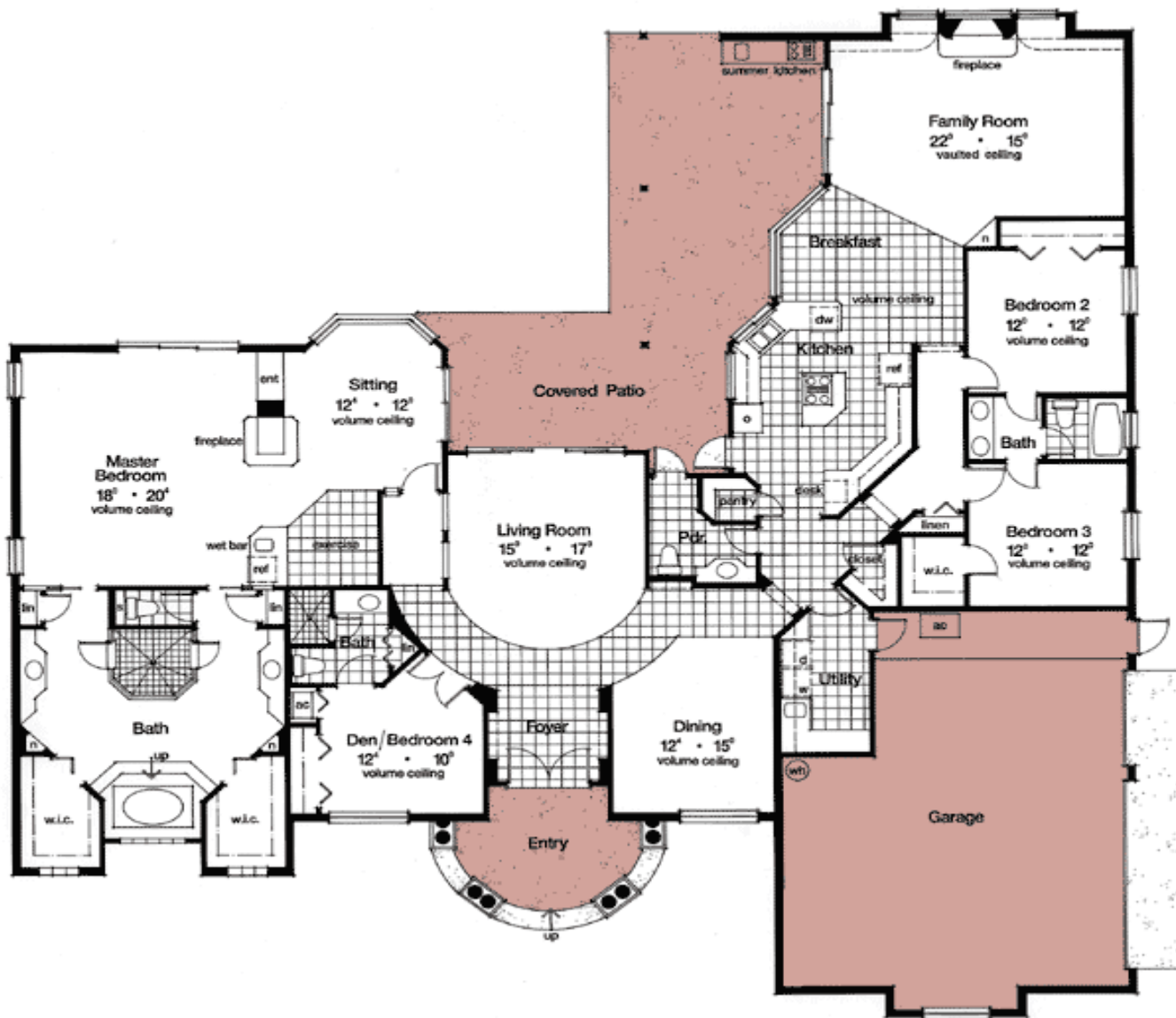
Other: 14' Foyer; 8' Pool Bath; 12' Den, BR#4, Living & Dining Rooms; 10'-13'10" Vaulted Family Room

Standard Foundations: Slab

Special Features: Split Bedrooms, Photo Gallery, PDF, Butler Walk-in Pantry, Den-Office-Library-Study, CAD Available, Corner Lot, Jack & Jill Bath, 1st Floor Master Suite

One Set	Five Sets	Eight Sets	Reproducible	PDF File	CAD
\$810	\$850	\$900	\$990	\$990	\$1,980

Main Level



Rear View



Interior

