

Architectural Designs ...selling quality house plans for over 30 years.

Plan W3435VL: Starter Home With Two Covered Porches



House plans are Copyright © 2009 by our architects and designers.

- Ideal as a starter home, this traditional home plan includes lots of extras in its modest area.
- The front porch opens to the great room, while the rear porch accesses the dining room.
- The open living area offers a good flow among the great room, dining room and kitchen. In the great room, the ceiling vaults up to 11', and a fireplace is the focus.
- The kitchen and dining room overlook the backyard, with the utility room conveniently placed off the kitchen.
- The split-bedroom plan sites the master suite on one side of the house. Here, the walk-in closet and the private bath are featured. On the other side, two family bedrooms share the second bath.
- Ceilings: 8' standard.
- Foundation options: slab or crawl space. Specify when ordering.

Style: Cottage, Country, Traditional

Total Living Area: 1277

Main Flr.: 1277

Front Porch: 264 sq. ft.

Rear Porch: 264 sq. ft.

Total Square Feet: 1,805 sq. ft.

Bedrooms: 3

Full Bathrooms: 2

Width: 44'

Depth: 41'

Maximum Ridge Height: 22'

Exterior Walls: 2x4

Ceiling Height:

Main Floor: 8'

Standard Foundations: Combo Basement-Crawl, Pier, Slab, Walkout, Crawl
Special Features: Narrow Lot, Sloping Lot, 1st Floor Master Suite

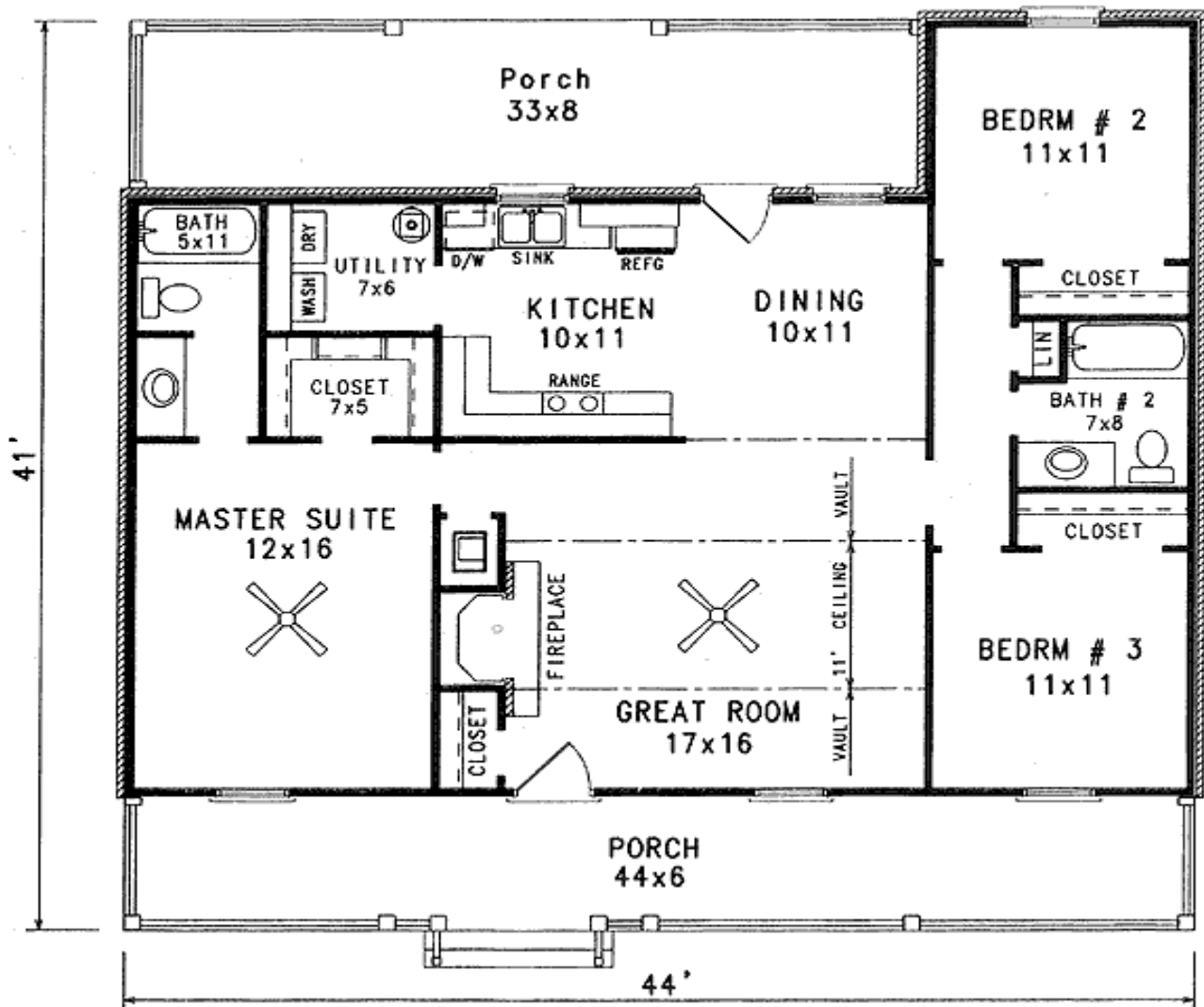
One Set
\$395

Five Sets
\$470

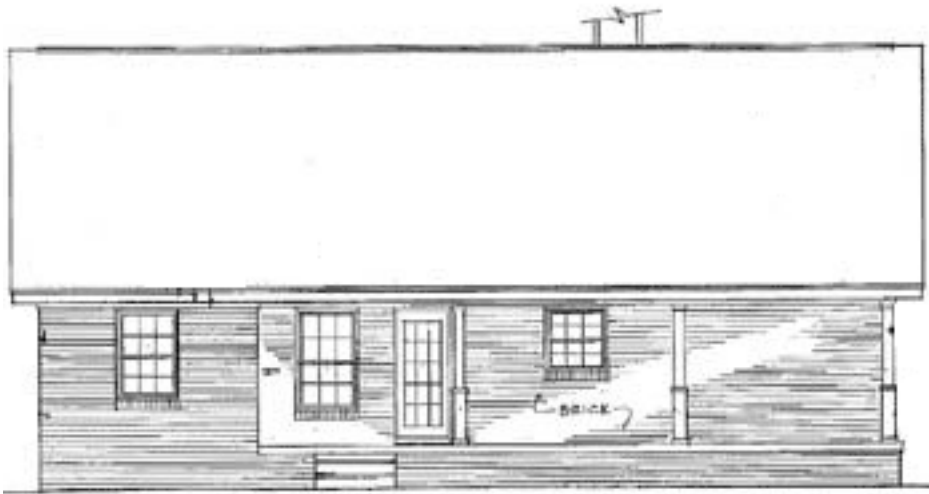
Eight Sets
\$520

Reproducible
\$620

Main Level



Rear View



REAR ELEVATION