

# Architectural Designs ...selling quality house plans for over 30 years.

Plan W2179DR: Year-Round Vacation Retreat



House plans are Copyright © 2009 by our architects and designers.

- A dramatic turret, decking and lots of windows distinguish this wonderful year-round vacation home.
- A fireplace serves as the focal point of the family room, which is open to the kitchen with its breakfast area. The turret houses a dining room. There is a screen porch off the family room.
- The main-level master suite features a walk-in closet and an amenity-filled bath.
- A marvelous guest suite occupies the upper level. Here you find a bedroom with a sitting area and a private bath.
- In the walkout basement, highlights include another family room with a fireplace and a wine cellar. Two bedrooms share a bath.
- Ceilings: 8'.
- Foundation: walk-out basement.

Style: Beach, Canadian, Metric, Vacation

Total Living Area: 3392

Main Flr.: 1434

2nd Flr.: 524

Lower Level: 1434

Front Porch: 250 sq. ft.

Entry: 40 sq. ft.

Total Square Feet: 4,189 sq. ft.

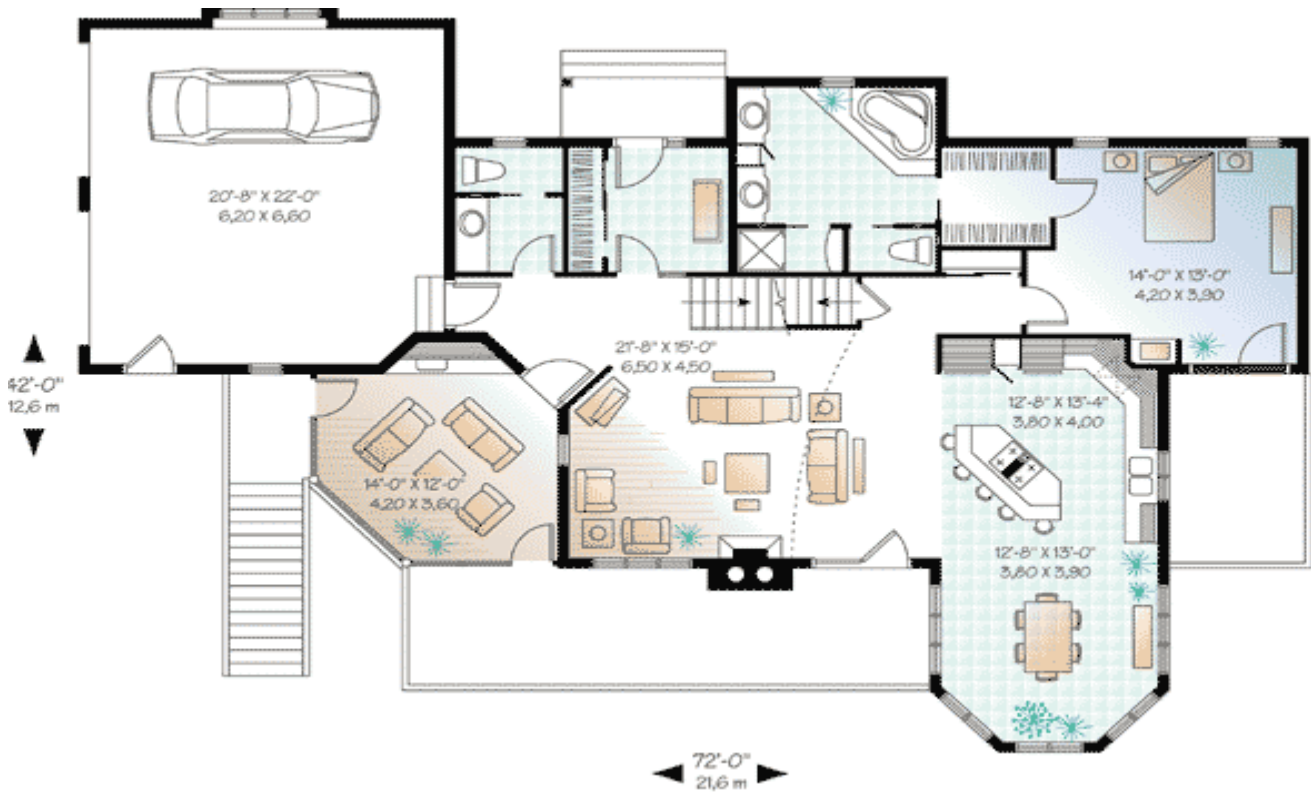
Attached Garage: 2 Car, 507 sq. ft.

Bedrooms: 4

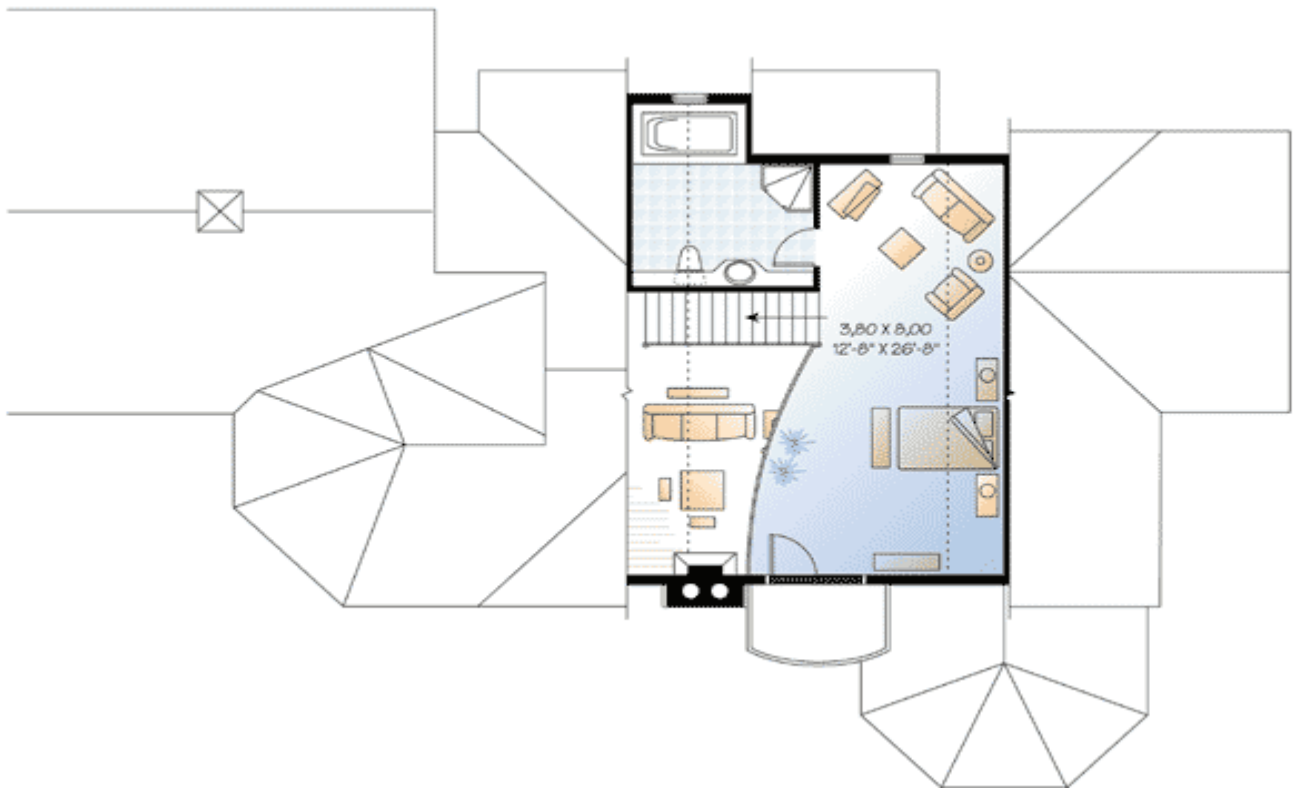
Full Bathrooms: 3  
Half Bathrooms: 1  
Width: 72'  
Depth: 42'  
Maximum Ridge Height: 34'8"  
Exterior Walls: 2x6  
Ceiling Height:  
Main Floor: 8'  
Lower Floor: 8'  
2nd Floor: 8'  
Other: Lower Level  
Standard Foundations: Walkout  
Alternate Foundations: Slab (\$295), Basement (\$295), Crawl (\$295)  
Special Features: PDF, Sloping Lot, Loft, 1st Floor Master Suite, Corner Lot, CAD Available

One Set	Five Sets	Eight Sets	Reproducible	PDF File	CAD
\$849	\$889	\$919	\$1,099	\$1,099	\$1,820

## Main Level



## 2nd Level



## Lower Level



Elevation #2



Rear View

