

## Plan W4074DB: Secluded In-Law Suite



House plans are Copyright © 2009 by our architects and designers.

- The front elevation of this design offers a variety of details to enjoy, including a tall chimney, a wrought-iron widow's balcony and triple windows under a hipped roof. Inside, nine-foot ceilings are standard on the first floor, with a two-story entry. Cathedral ceilings expand both the master bedroom and the family room.
- A secluded guest suite with a walk-in closet and a full bath is great for a live-in relative.
- At the opposite end of the first floor, the master suite accesses the covered rear porch and is pampered with a luxury bath containing his and her vanities, an oval whirlpool tub, a separate shower and a walk-in closet with built-ins.
- The kitchen, breakfast room and family room form one large space, with a corner fireplace in the family room and an angled counter with a snack bar delineating the kitchen. A walk-in pantry and counter space are conveniently located between the kitchen and the formal dining room with its bay window.
- Wrapping around the entry, the staircase leads to the second floor, which contains two bedrooms, a bathroom and a large expansion space.
- Foundation options: basement or slab.

Style: European, French Country, Traditional

Total Living Area: 2639

Main Flr.: 2087

2nd Flr.: 552

Front Porch: 147 sq. ft.

Attic: 450 sq. ft.

Total Square Feet: 3,909 sq. ft.

Attached Garage: 3 Car, 673 sq. ft.

Bedrooms: 4

Full Bathrooms: 3

Half Bathrooms: 1  
Width: 68'7"  
Depth: 57'4"  
Maximum Ridge Height: 30'9"  
Exterior Walls: 2x4  
Ceiling Height:  
Main Floor: 9'  
2nd Floor: 8'

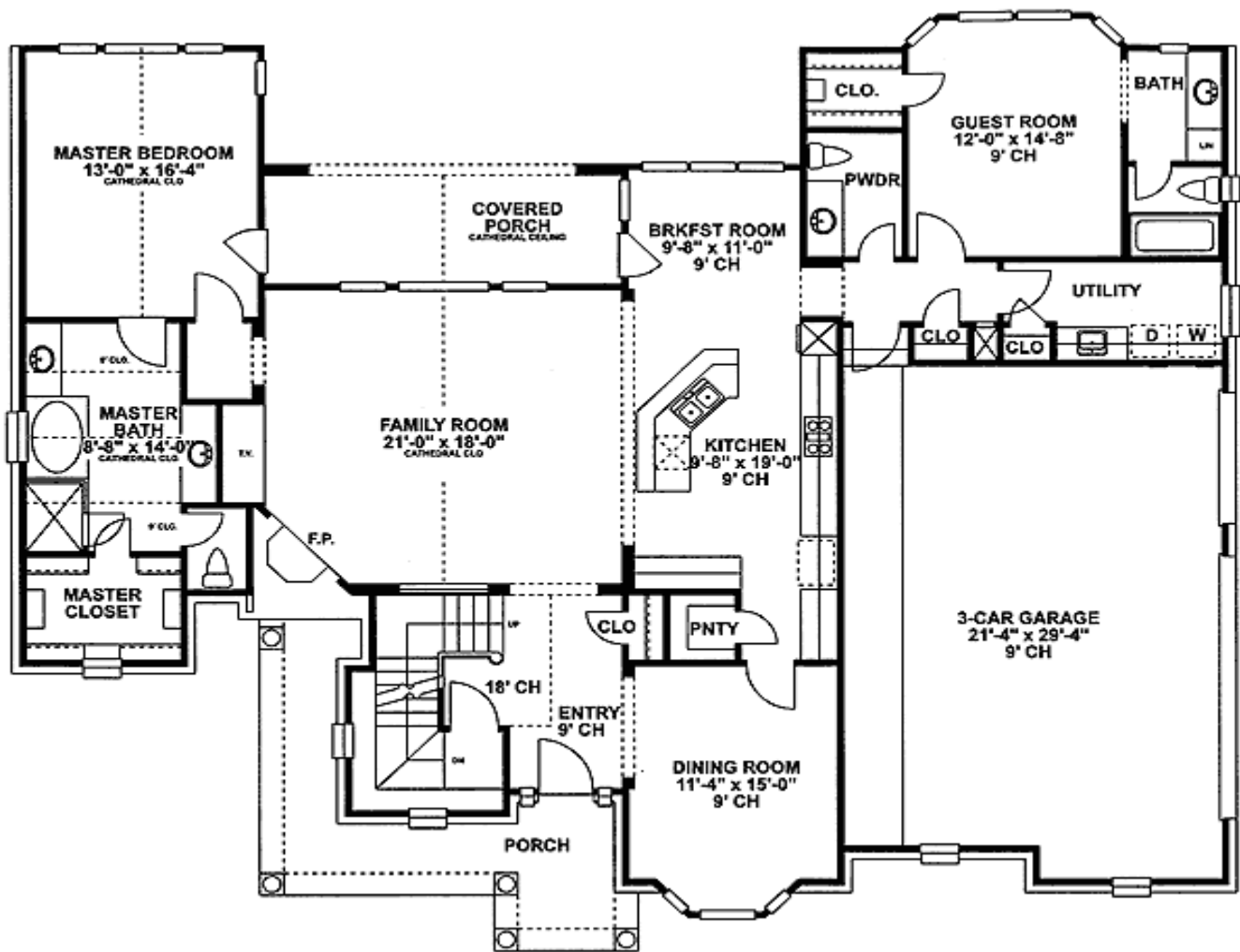
Standard Foundations: Slab

Alternate Foundations: Basement (\$150)

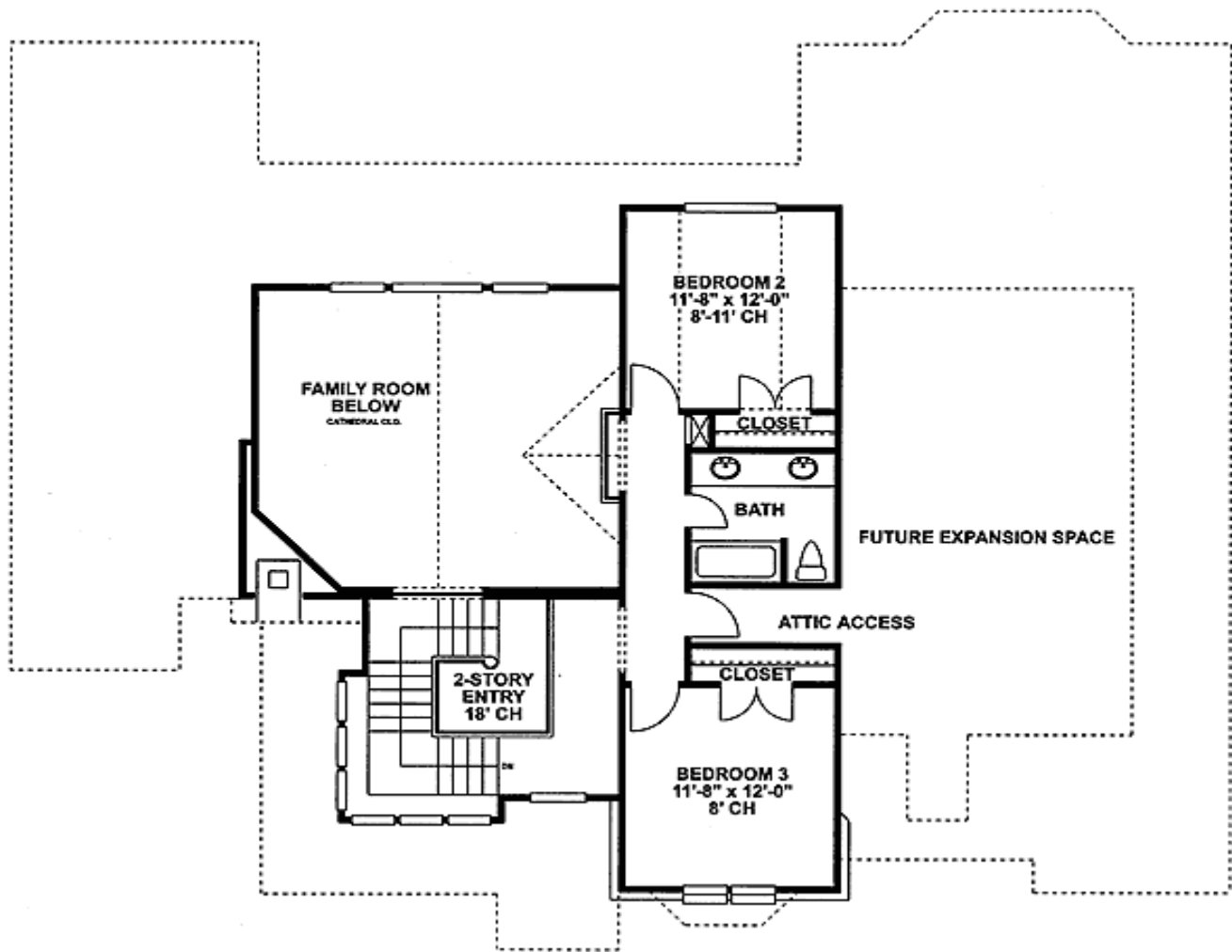
Special Features: In-Law Suite, CAD Available, Photo Gallery, 1st Floor Master Suite, PDF, Bonus Room, Butler Walk-in Pantry, Corner Lot, Unlimited Build

One Set	Five Sets	Eight Sets	Reproducible	PDF File	CAD
\$695	\$845	\$905	\$845	\$845	\$1,145

## Main Level



## 2nd Level



# Architectural Designs ...selling quality house plans for over 30 years.

Photo



Photo #2



Elevation #2



Rear View



Entry/Foyer



Entry modified by owner

Family Room



Stairway

