

## Plan W6221V: Country Home with Wrap-Around Porch



House plans are Copyright © 2009 by our architects and designers.

- Encircled by a charming wrap-around porch, this compact three-bedroom country home incorporates over 2,000 square feet of efficient living space while exuding spacious ambiance. Featuring an open floor plan in which the dining, kitchen and living rooms enjoy common boundaries, the home provides a delightful floor plan for easy living.
- Entered from the covered porch, the living room is warmed by a fireplace flanked by lower cabinets and windows above. The large U-shaped eat-in country kitchen houses a snack bar, pantry, ample cabinet space and is open to the dining room.
- The downstairs master bedroom is served by his and hers closets and a master bath which includes dual laboratories, a linen closet, a separate shower and tub. Two tidy upstairs bedrooms both have large closets and share a full bath.
- The garage, located to the back of the house, is equipped with a large separate storage/work room.
- Foundation options: basement, crawl space, slab.

Style: Country, Farmhouse, Southern, Traditional

Total Living Area: 2162

Main Flr.: 1339

2nd Flr.: 823

Basement Unfinished: 1,339 sq. ft.

Porch, Combined: 1,132 sq. ft.

Storage: 116 sq. ft.

Total Square Feet: 5,277 sq. ft.

Attached Garage: 2 Car, 528 sq. ft.

Bedrooms: 3

Full Bathrooms: 2

Half Bathrooms: 1

Width: 58'

Depth: 67'2"

Maximum Ridge Height: 27'

Exterior Walls: 2x4

Ceiling Height:

Main Floor: 9'

2nd Floor: 8'

Standard Foundations: Slab, Basement, Crawl

Special Features: PDF, Wrap Around Porch, Photo Gallery, 1st Floor Master Suite

One Set  
\$570

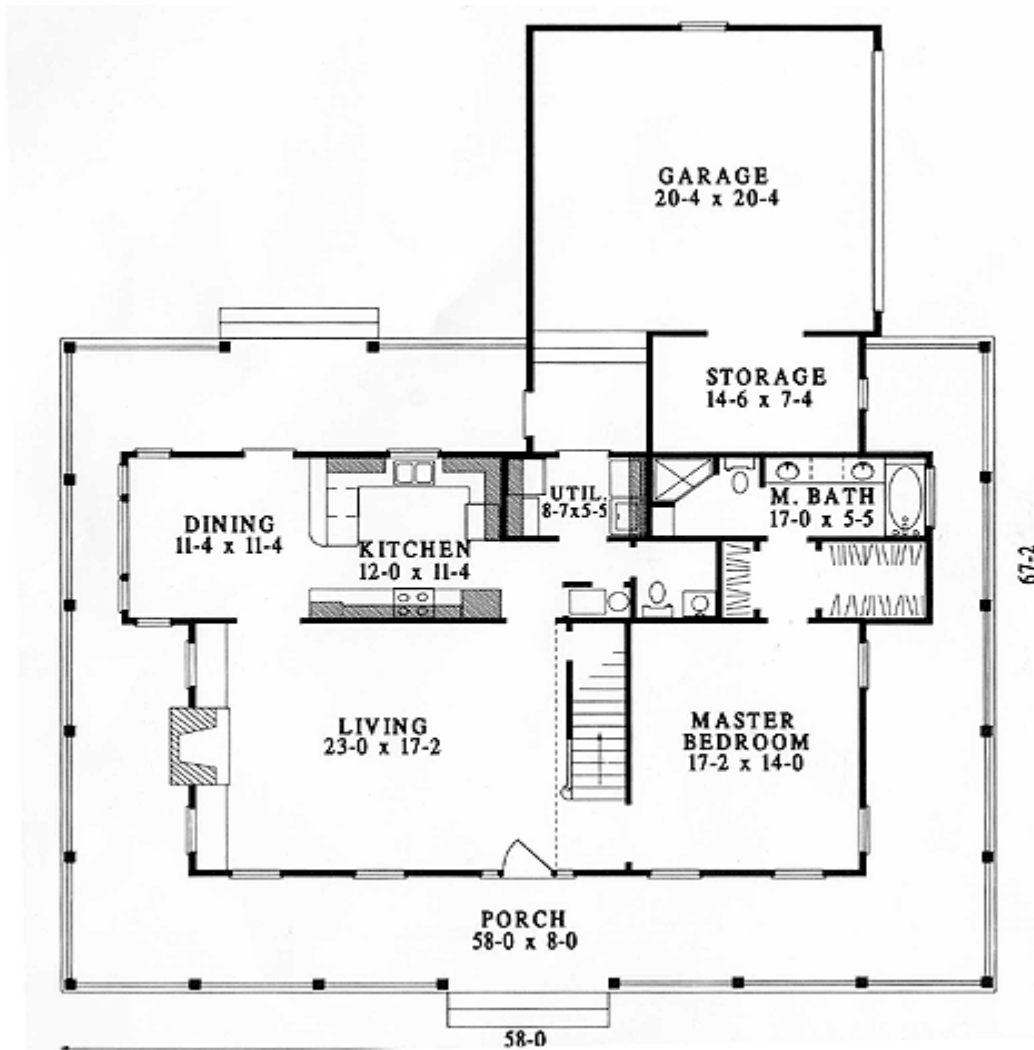
Five Sets  
\$620

Eight Sets  
\$660

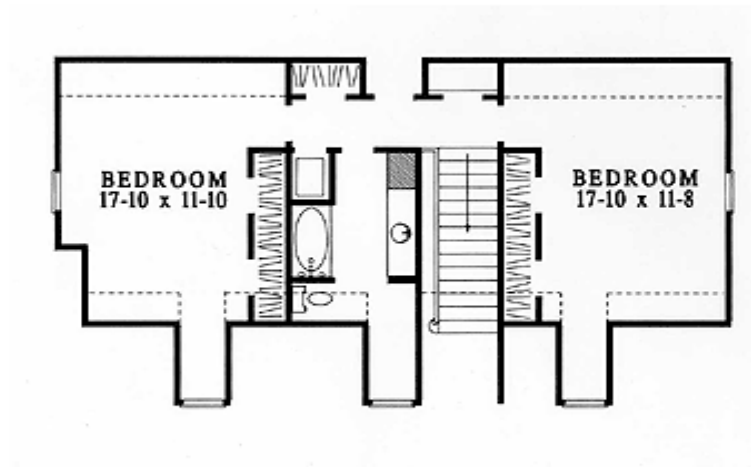
Reproducible  
\$820

PDF File  
\$820

## Main Level



## 2nd Level



Elevation #2



Rear View

