

# Architectural Designs ...selling quality house plans for over 30 years.

Plan W2240SL: Two Bedroom Carriage House



House plans are Copyright © 2009 by our architects and designers.

- This carriage house plan features storage for two cars and spacious living quarters.
- The garage has 9' ceilings and two 9'x8' overhead doors.
- Interior stairs lead to the kitchen/breakfast area on the upper level, complete with large pantry.
- Dormers brighten the sitting area with natural light.
- Both bedrooms have plenty of closet space and share a full bath.

Style: Carriage, Garage

Total Living Area: 1240

Main Flr.: 288

2nd Flr.: 952

Total Square Feet: 1,870 sq. ft.

Attached Garage: 2 Car, 630 sq. ft.

Bedrooms: 2

Full Bathrooms: 1

Width: 34'

Depth: 32'

Maximum Ridge Height: 27'

Exterior Walls: 2x4

Optional Exterior Walls: 2x6 \$75

Ceiling Height:

Main Floor: 9'

2nd Floor: 8'

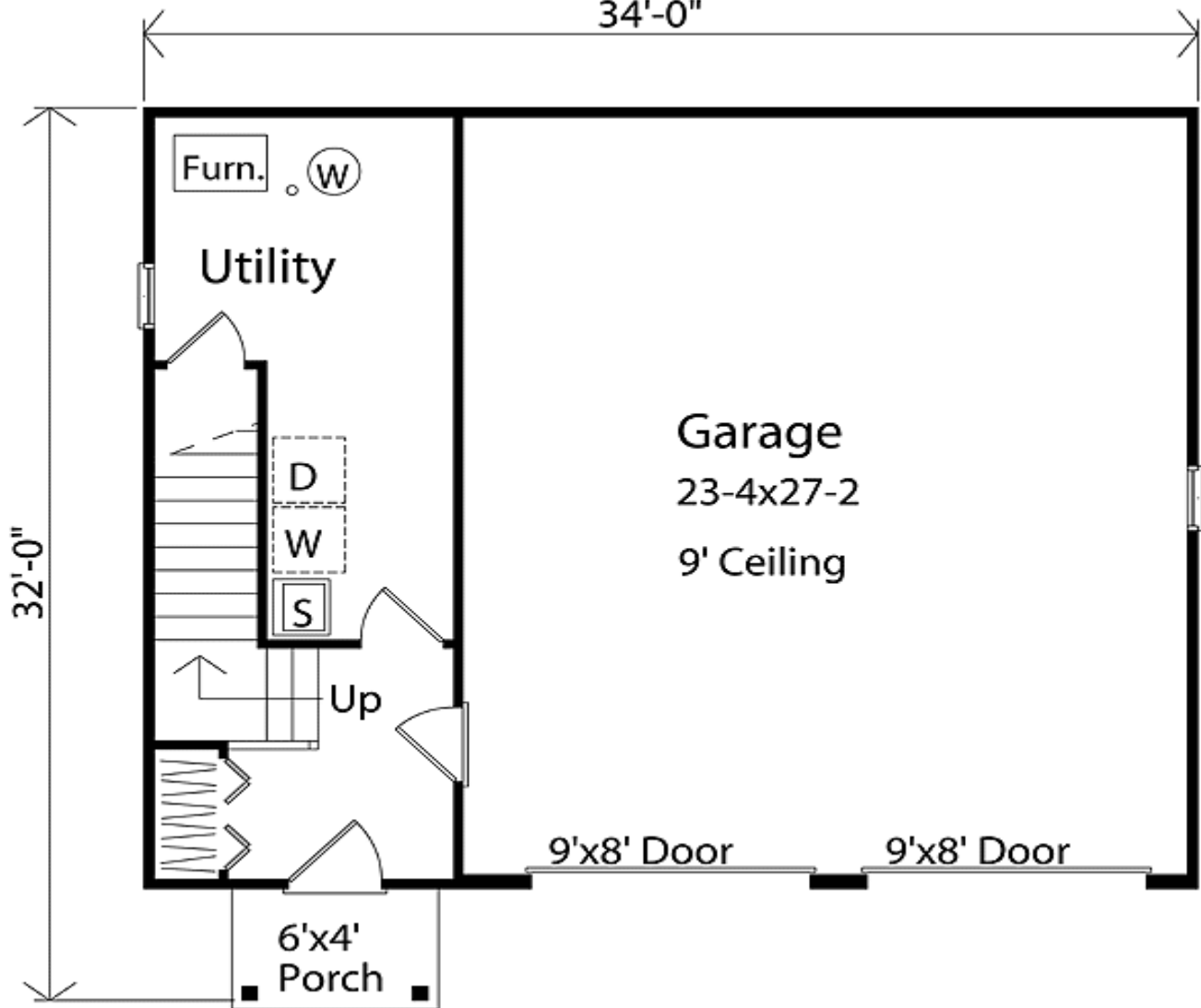
Standard Foundations: Slab

Special Features: CAD Available, Narrow Lot, PDF

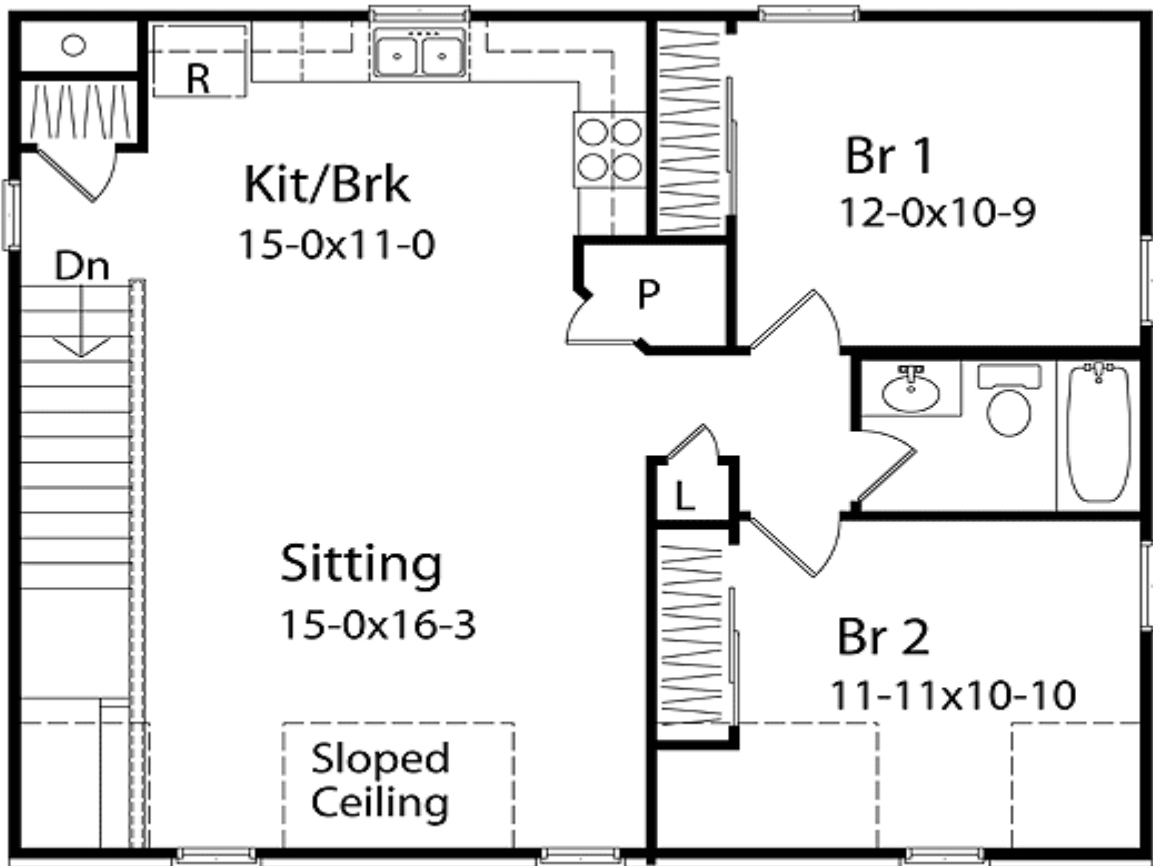
One Set	Five Sets	Eight Sets	Reproducible	PDF File	CAD
\$250	\$340	\$385	\$450	\$450	\$550

Main Level

34'-0"



2nd Level



## Sides/Rear

