

Plan W35361GH: Popular Compact Design



House plans are Copyright © 2009 by our architects and designers.

- With room for 2 cars plus an office and bath on the ground floor, this carriage house plan packs a lot into its space.
- On the second floor main living level, the great room, dining area and kitchen are all open to each other, creating a spacious feeling. Double doors lead out to the covered deck.
- The master suite has its own private bath and two closets.
- Another good-sized bedroom and a hall bath complete this design.
- Related Plan: Replace the office with a shop with house plan 35245GH.

Style: Carriage, Garage, Metric

Total Living Area: 1320

Main Flr.: 1320

Deck: 300 sq. ft.

Workshop: 556 sq. ft.

Total Square Feet: 1,620 sq. ft.

Bedrooms: 2

Full Bathrooms: 2

Width: 44'

Depth: 30'

Maximum Ridge Height: 27'1"

Exterior Walls: 2x6

Ceiling Height:

Lower Floor: 8'10"

Other: 13' Great Room

Standard Foundations: Slab

Special Features: Drive Under Garage, 1st Floor Master Suite, CAD Available, Narrow Lot, PDF

Five Sets
\$525

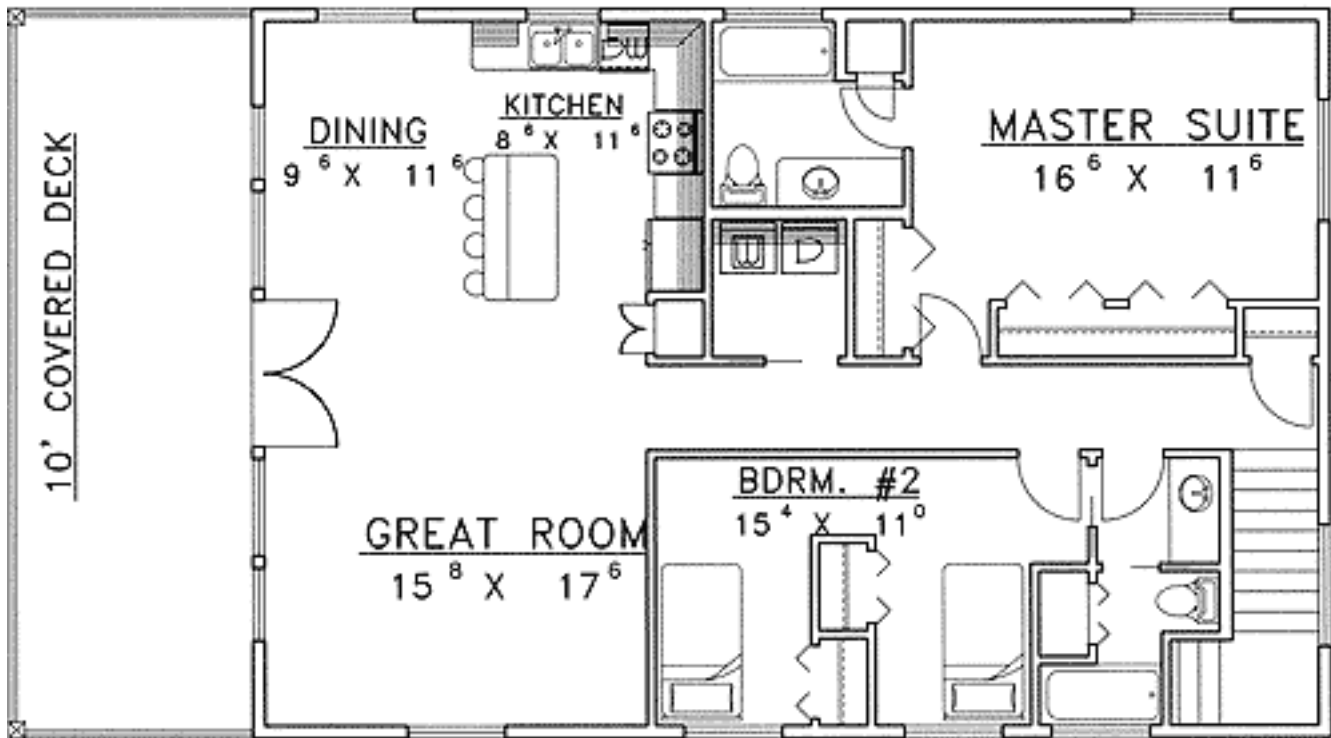
Eight Sets
\$600

Reproducible
\$550

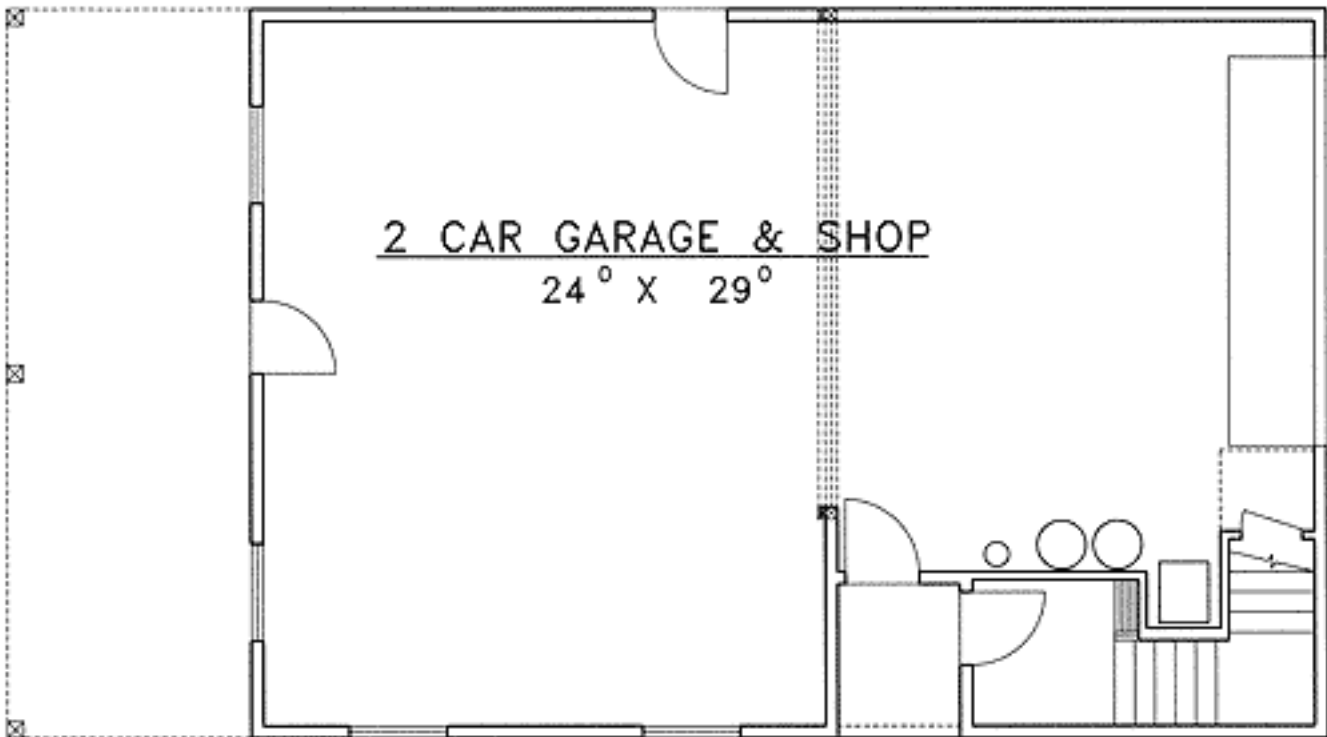
PDF File
\$800

CAD
\$800

Main Level



Lower Level



Elevation #2

