

Architectural Designs ...selling quality house plans for over 30 years.

Plan W52072TH: Updated Prairie Styling



House plans are Copyright © 2009 by our architects and designers.

- An updated variation on traditional Prairie styling, this home has all the amenities needed by a modern family. There is a formal dining room, an efficient kitchen with abundant storage and counter space, main floor laundry and a great room with a huge deck area and lots of windows.
- The master suite has a private bath with separate shower and soaking tub, and twin sinks.
- Upstairs, two bedrooms each have walk-in closets and share a bath. A large loft area and a bonus room provide plenty of space for an active family.

Style: Northwest, Prairie Style

Total Living Area: 2217

Main Flr.: 1533

2nd Flr.: 694

Bonus: 410 sq. ft.

Deck: 472 sq. ft.

Total Square Feet: 3,896 sq. ft.

Attached Garage: 3 Car, 787 sq. ft.

Bedrooms: 3

Full Bathrooms: 2

Half Bathrooms: 1

Width: 60'

Depth: 54'

Maximum Ridge Height: 21'6

Exterior Walls: 2x6

Ceiling Height:

Main Floor: 8'

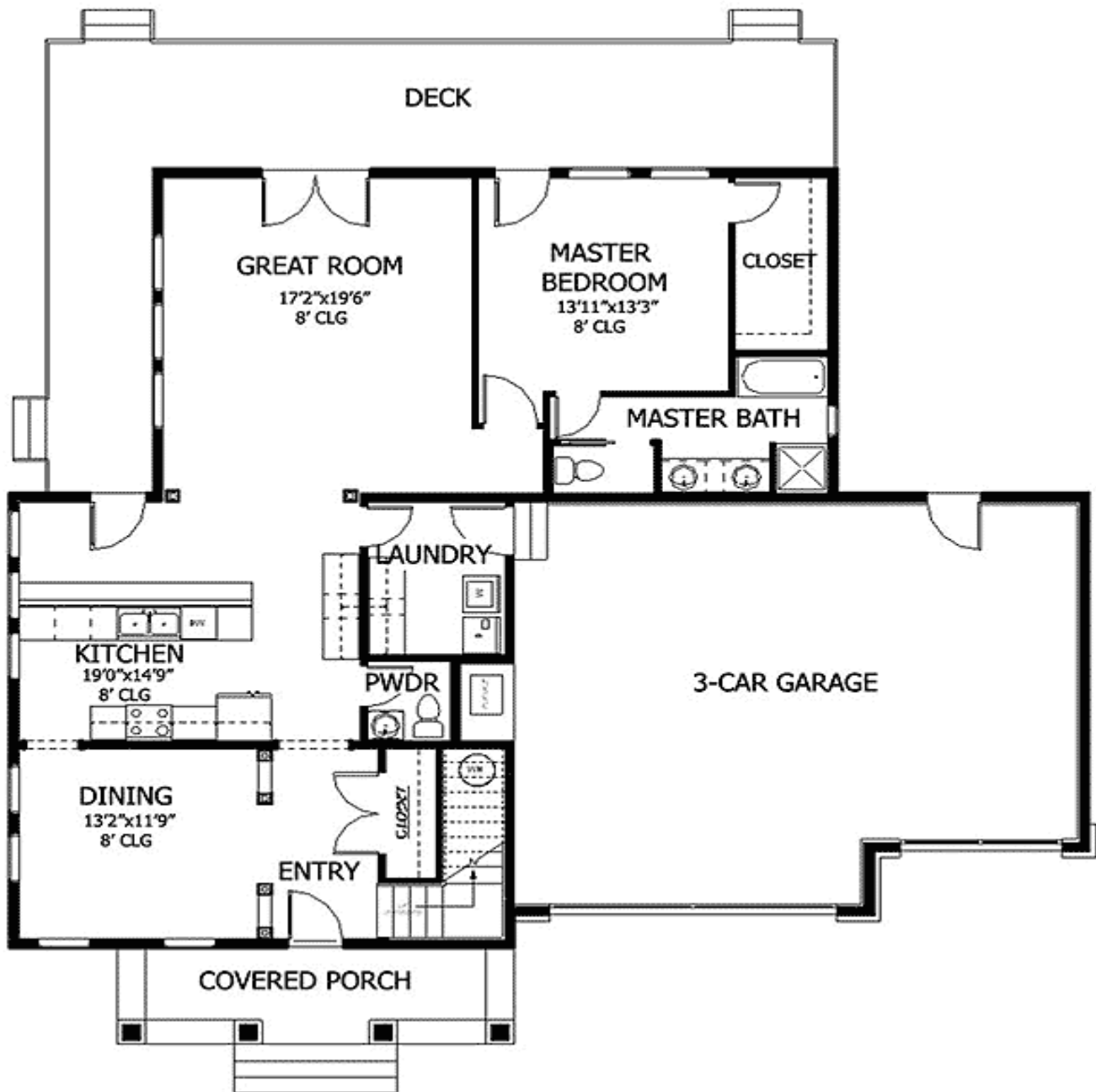
2nd Floor: 8'

Standard Foundations: Crawl

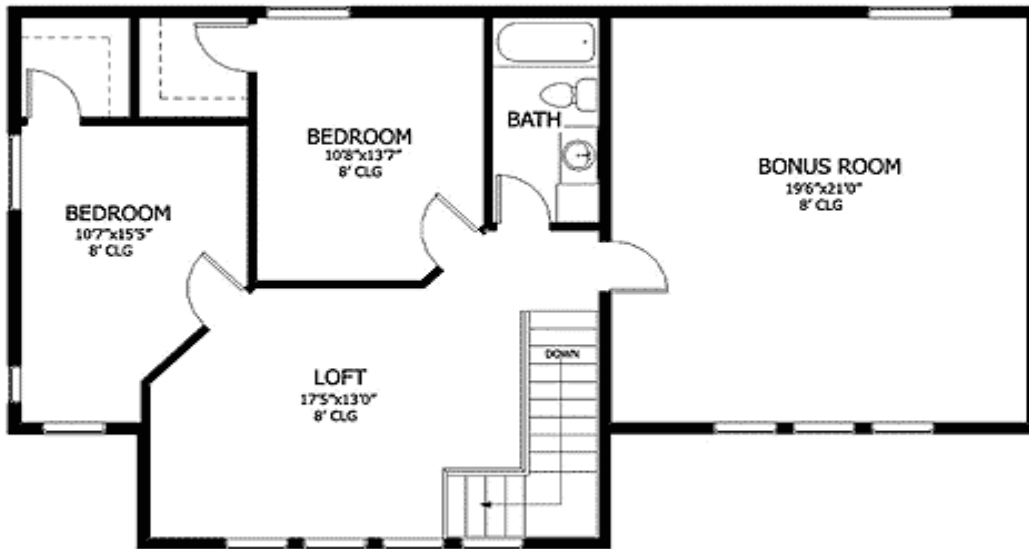
Special Features: 1st Floor Master Suite, PDF, Bonus Room, CAD Available

One Set	Five Sets	Eight Sets	Reproducible	PDF File	CAD
\$500	\$600	\$675	\$775	\$775	\$1,075

Main Level



2nd Level



Rear View

