

Architectural Designs ...selling quality house plans for over 30 years.

Plan W90031PD: Elegant Stone Cottage



House plans are Copyright © 2009 by our architects and designers.

- A steep hip roof and stone exterior accent this elegant cottage home with a split level design.
- From the foyer, you step down to the large, sunken living room with optional fireplace. The dining room is open to both the kitchen and the living room and is brightened by a wall of windows.
- Step down to the garage level with coat closet or step up to an optional family room/laundry over the garage.
- Continue up more stairs to the bedroom level where you will find a master suite with walk-in closet and two additional bedrooms, all of which share the large bath.

Style: Canadian, European, Metric, Split Level

Total Living Area: 1428

Main Flr.: 706

2nd Flr.: 718

Basement Unfinished: 706 sq. ft.

Bonus: 264 sq. ft.

Total Square Feet: 2,658 sq. ft.

Attached Garage: 1 Car, 264 sq. ft.

Bedrooms: 3

Full Bathrooms: 1

Half Bathrooms: 1

Width: 24'

Depth: 32'

Maximum Ridge Height: 32'1"

Exterior Walls: 2x6

Ceiling Height:

Main Floor: 8'

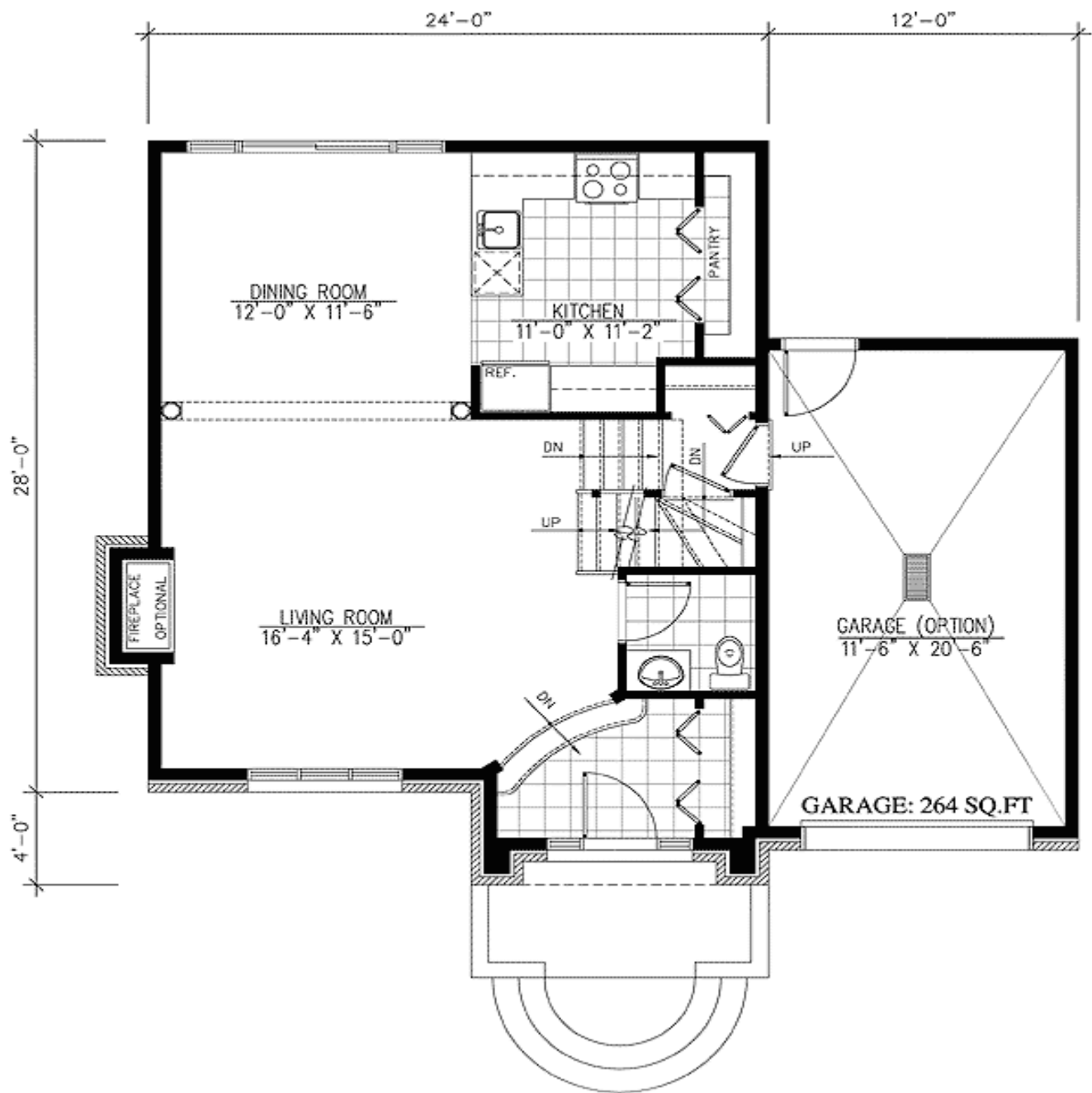
2nd Floor: 8'

Standard Foundations: Daylight, Basement

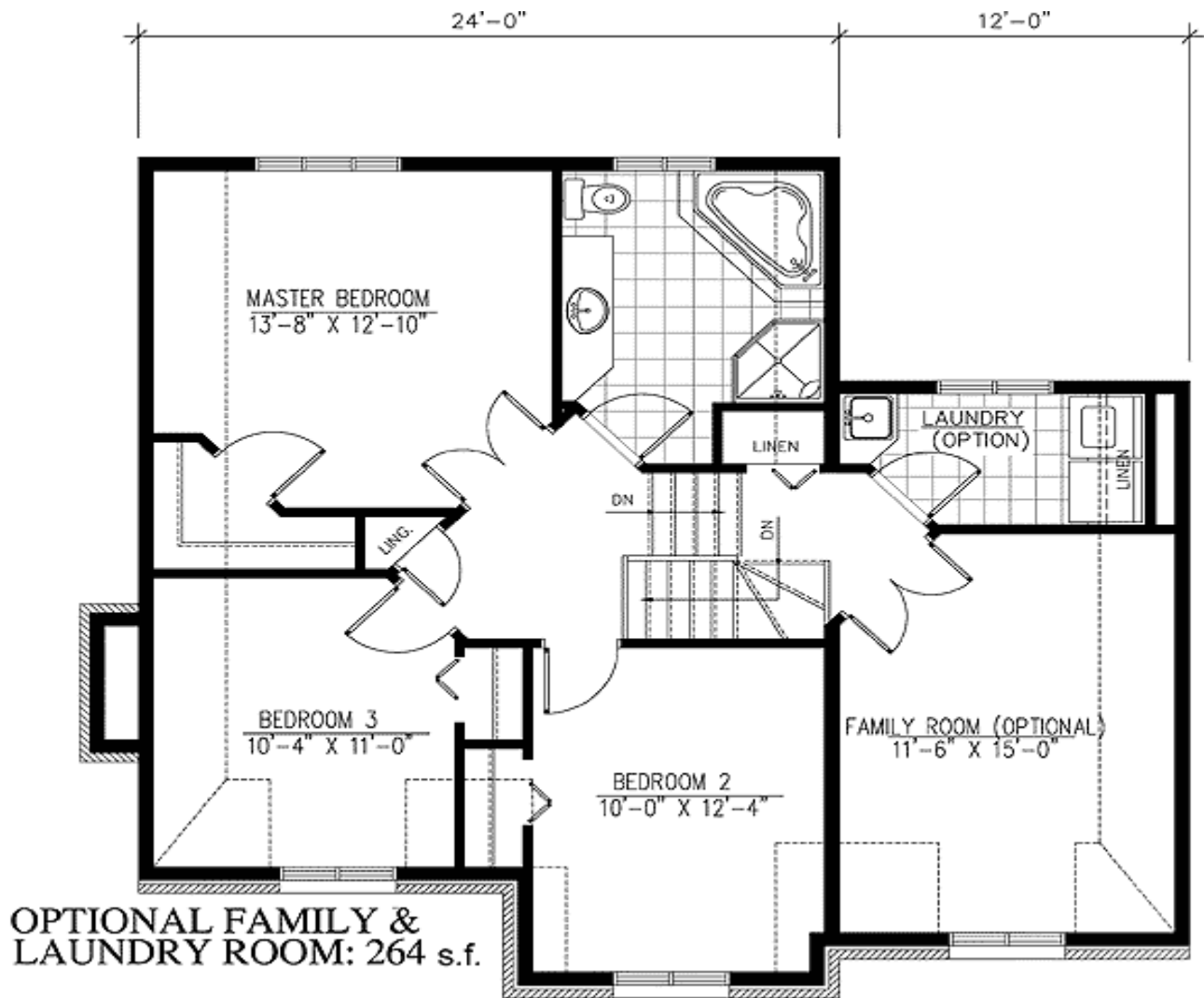
Special Features: Bonus Room, CAD Available, Narrow Lot, PDF, Sloping Lot

One Set	Five Sets	Eight Sets	Reproducible	PDF File	CAD
\$440	\$515	\$540	\$735	\$735	\$1,095

Main Level



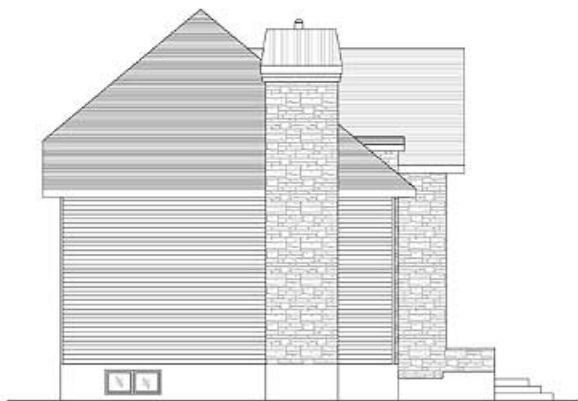
2nd Level



Sides/Rear



REAR ELEVATION



LEFT ELEVATION



RIGHT ELEVATION