

Architectural Designs ...selling quality house plans for over 30 years.

Plan W0051C: Colonial Design



House plans are Copyright © 2009 by our architects and designers.

- This Colonial design features an open floor plan on the main level. Over the front door, a Palladian window transmits light to the two-story foyer.
- The kitchen easily serves the breakfast area, the sunken family room and the formal dining room.
- Upstairs, the master suite includes twin walk-in closets and a bath with garden tub and separate shower.
- Another walk-in closet is found in one of the family bedrooms. A third bedroom, a hall bath and several hall closets complete the upper level.
- Ceilings: 8' standard.
- Foundation: basement.

Style: Colonial, Traditional

Total Living Area: 1825

Main Flr.: 1007

2nd Flr.: 821

Basement Unfinished: 1,007 sq. ft.

Deck: 140 sq. ft.

Total Square Feet: 3,395 sq. ft.

Attached Garage: 2 Car, 420 sq. ft.

Bedrooms: 4

Full Bathrooms: 2

Half Bathrooms: 1

Width: 39'10"

Depth: 39'4"

Maximum Ridge Height: 30'6"

Exterior Walls: 2x4

Ceiling Height:

Standard Foundations: Basement

Special Features: Narrow Lot

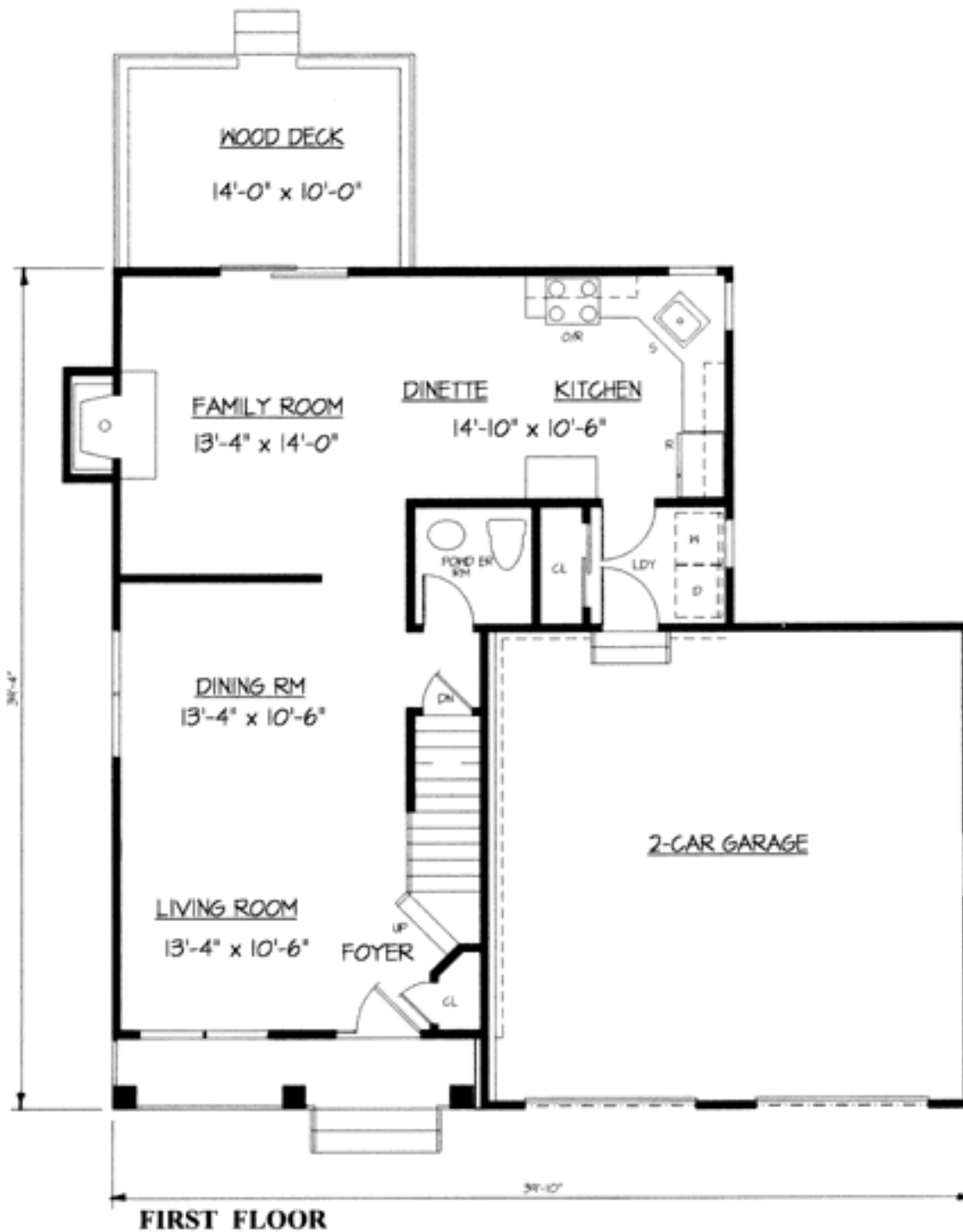
One Set
\$450

Five Sets
\$505

Eight Sets
\$550

Reproducible
\$670

Main Level



2nd Level

