

Plan W1772LV: Appealing Cottage



House plans are Copyright © 2009 by our architects and designers.

- A columned entry porch welcomes guests while in back another covered porch is accessed from the gathering room. The slim profile of the design suits it to a narrow lot.
- The front door opens to the dining room with its handy butler's pantry and to the open living area beyond. Only a peninsula eating bar separates the kitchen from the breakfast room and the gathering room with its fireplace flanked by optional cabinets.
- His and her walk-in closets and vanities are features of the master suite.
- Upstairs, the second full bath services two family bedrooms.
- Ceilings: 9' standard.
- Related Plan: For an alternate exterior, see house plan 1773LV.

Style: Cottage, Craftsman

Total Living Area: 2010

Main Flr.: 1060

2nd Flr.: 950

Front Porch: 270 sq. ft.

Rear Porch: 72 sq. ft.

Total Square Feet: 2,792 sq. ft.

Detached Garage: 2 Car, 440 sq. ft.

Bedrooms: 2, 3

Full Bathrooms: 3

Width: 32'

Depth: 45'

Maximum Ridge Height: 26'6"

Exterior Walls: 2x4

Ceiling Height:

Main Floor: 9'

2nd Floor: 9'

Other: 8'-10' Sloped MBR, 7'10"-9' Sloped Master Bath & Suite#2"

Standard Foundations: Crawl

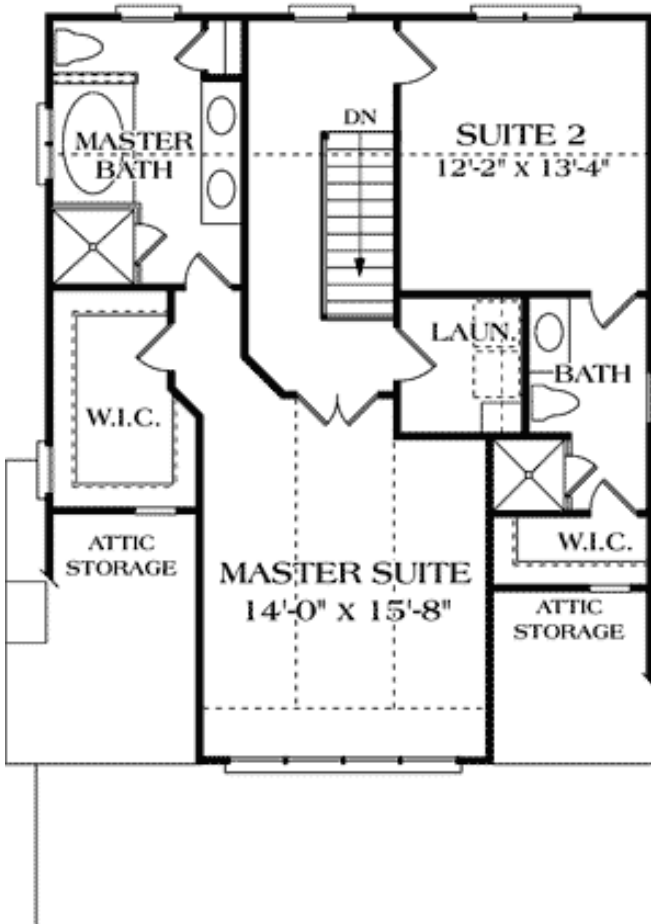
Special Features: PDF, Den-Office-Library-Study, Narrow Lot, Corner Lot

Five Sets	Reproducible	PDF File	CAD
\$1,000	\$1,350	\$1,350	\$2,700

## Main Level



## 2nd Level



Rear View

