

Plan W3067D: Flexible House Plan with In-Law Suite



House plans are Copyright © 2009 by our architects and designers.

- At opposite ends of this luxurious sprawling design are the master suite and the guest suite, which could become wonderful in-law quarters. Both suites open to private decks.
- In the informal living area, the family room lies next to the bayed breakfast room and the islanded kitchen with its walk-in pantry. The formal living area is comprised of a dining room set off by columns and a fireplaced living room that opens to the large deck in back.
- The guest suite also features a sitting area with a small auxiliary kitchen. In the master suite, the bathroom contains a spa tub next to a separate shower, with his and her walk-in closets on either side.
- By moving the door to bedroom three so that it opens to the foyer, this room could be used as a study. Similarly, bedroom four could be accessed from the master suite and/or the living room for a home office. As shown, it is accessed from the master suite and functions as a bedroom or a media center.
- Related Plans: For a larger version, see house plan 31030D (3,329 sq. ft.).
- For smaller versions see 31041D (2,458 sq. ft.) and 31022D (3,066 sq. ft.).
- Foundation options: basement, slab or crawl space. Specify when ordering.

Style: Country

Total Living Area: 3164

Main Flr.: 3164

Basement Unfinished: 3,164 sq. ft.

Front Porch: 209 sq. ft.

Deck: 390 sq. ft.

Total Square Feet: 7,550 sq. ft.

Attached Garage: 3 Car, 623 sq. ft.

Bedrooms: 3, 5

Full Bathrooms: 3
Half Bathrooms: 1
Width: 116'2"
Depth: 67'11"
Maximum Ridge Height: 25'
Exterior Walls: 2x4
Ceiling Height:
Main Floor: 9'
Other: 11' Entry & Dining Room; 10' Utility; 11' Vaulted MBR, Study & Living Room
Standard Foundations: Slab, Basement, Crawl
Special Features: CAD Available, Photo Gallery, 1st Floor Master Suite, Butler Walk-in Pantry, Corner Lot, Den-Office-Library-Study, In-Law Suite

One Set	Five Sets	Eight Sets	Reproducible	CAD
\$785	\$845	\$910	\$1,145	\$2,690

Main Level

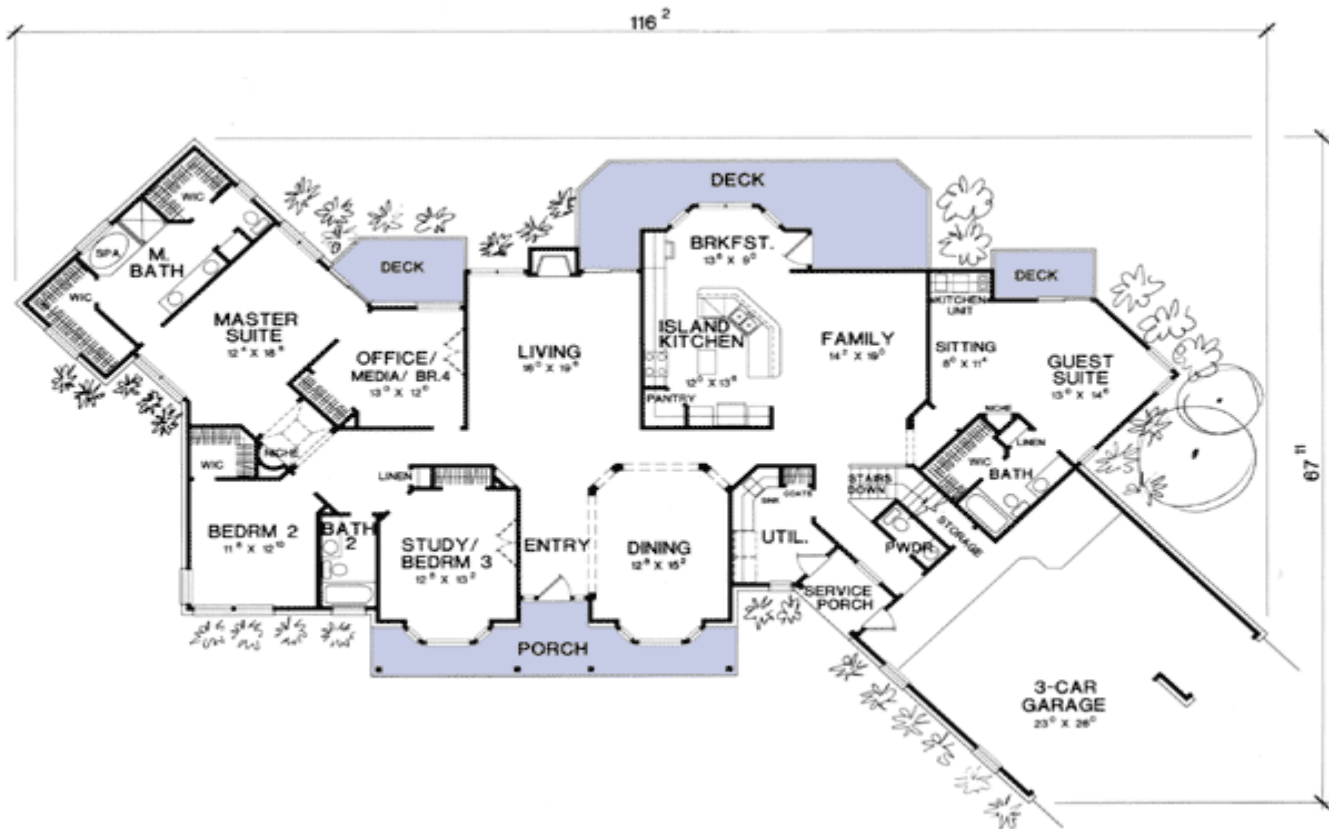


Photo #2



Rear View

