

Plan W2288SL: Side-Entry Carriage House Plan



House plans are Copyright © 2009 by our architects and designers.

- This carriage house plan offers an elegant yet traditional design.
- The 3-car side entry garage offers plenty of storage space.
- The upper level two bedroom, one bath apartment features generous room sizes.
- The kitchen features a pantry and conveniently serves the breakfast area.
- Related Plans: Get a front-entry garage with these designs - 2242SL and 2245SL (both 868 sq. ft) and 2251SL (840 sq. ft.).

Style: Carriage, Garage

Total Living Area: 973

2nd Flr.: 973

Total Square Feet: 1,946 sq. ft.

Attached Garage: 3 Car, 973 sq. ft.

Bedrooms: 2

Full Bathrooms: 1

Width: 31'4"

Depth: 32'

Maximum Ridge Height: 26'

Exterior Walls: 2x4

Optional Exterior Walls: 2x6 \$75

Ceiling Height:

Main Floor: 8'

2nd Floor: 8'

Standard Foundations: Slab

Special Features: CAD Available, Narrow Lot, PDF

One Set
\$250

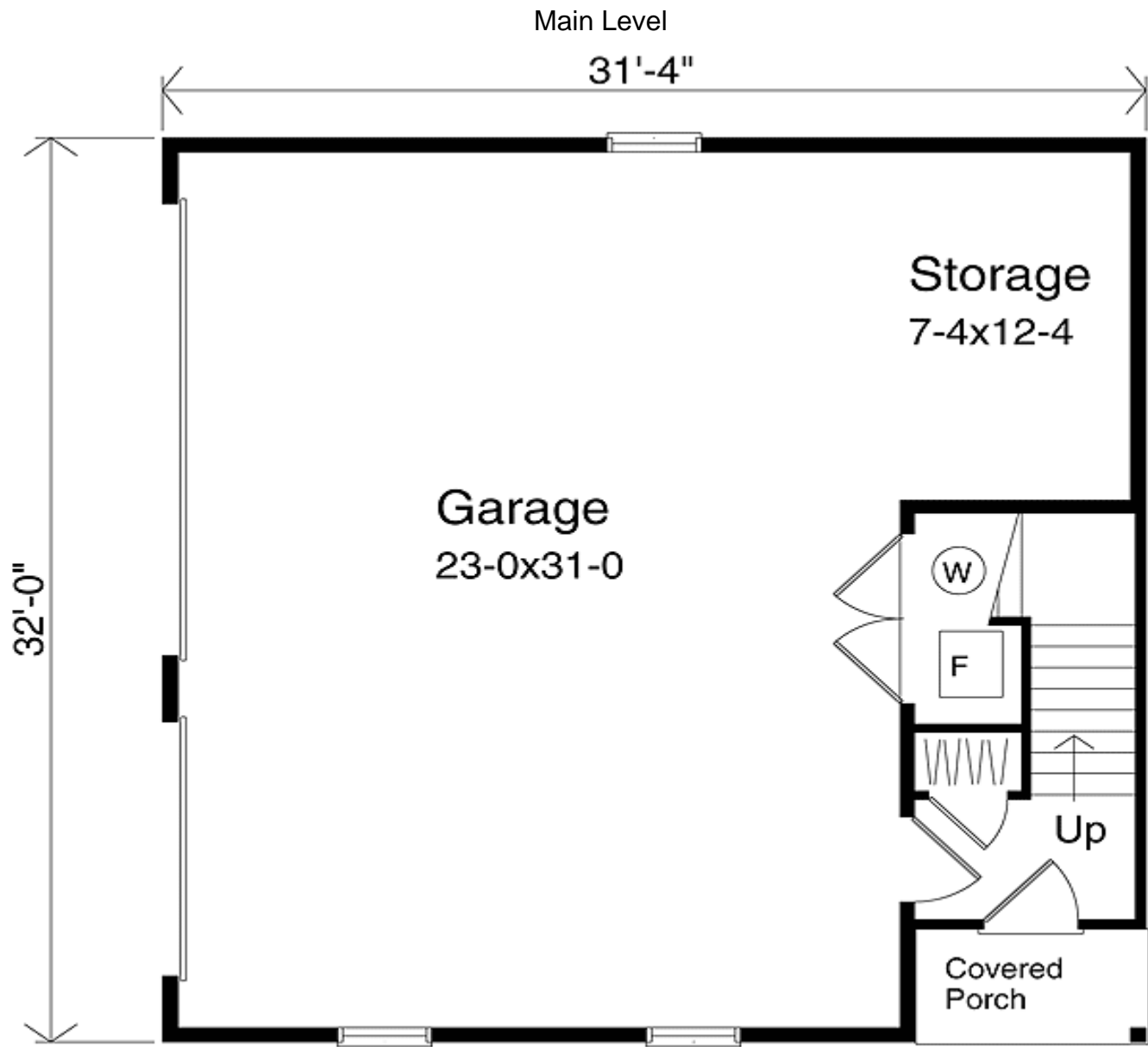
Five Sets
\$340

Eight Sets
\$385

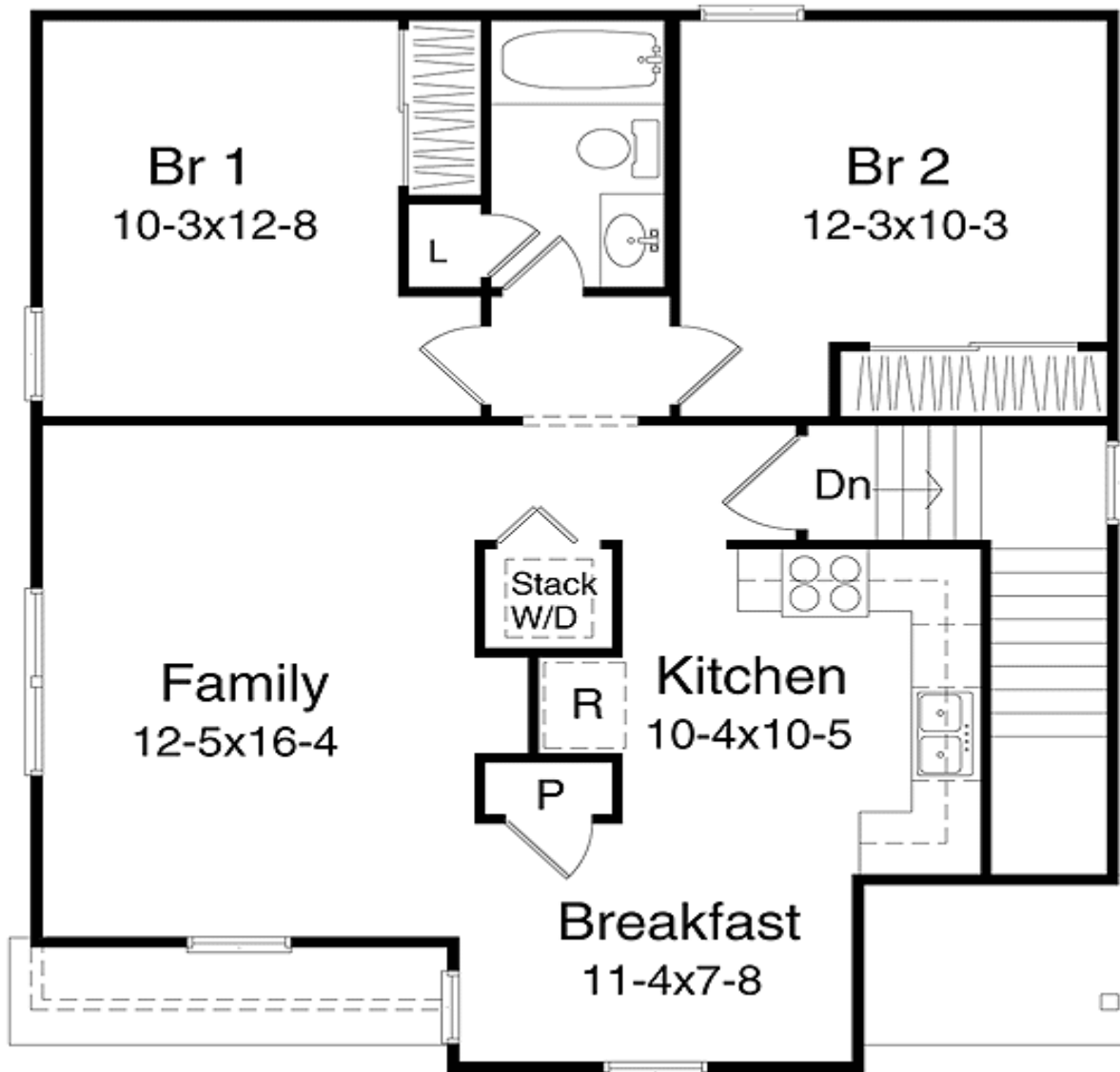
Reproducible
\$450

PDF File
\$450

CAD
\$550



2nd Level



Elevation #2

