

Plan W21460DR: Country Cottage with Two Layouts



House plans are Copyright © 2009 by our architects and designers.

- This is an elegant yet simple cottage with a streamlined and a deep porch wrapping around two sides. It comes with two different second floor layouts, so one is certain to please.
- A sealed entry - perfect to keep out the weather - has a coat closet to minimize clutter. A pocket door opens to a half bath with laundry facilities.
- The main floor is entirely open. The kitchen has a central island lunch counter.
- The stairs are tucked in the back corner maximizing living space.
- Upstairs, you'll find two bedrooms and a quiet retreat. The bath features a two-person spa tub and a separate shower.
- Related Plan: For a three bedroom layout, see house plan 21459DR.

Style: Canadian, Country, Farmhouse, Metric

Total Living Area: 1320

Main Flr.: 664

2nd Flr.: 656

Basement Unfinished: 664 sq. ft.

Front Porch: 168 sq. ft.

Total Square Feet: 2,152 sq. ft.

Bedrooms: 3

Full Bathrooms: 1

Half Bathrooms: 1

Width: 28'

Depth: 28'

Maximum Ridge Height: 31'6"

Exterior Walls: 2x6

Ceiling Height:

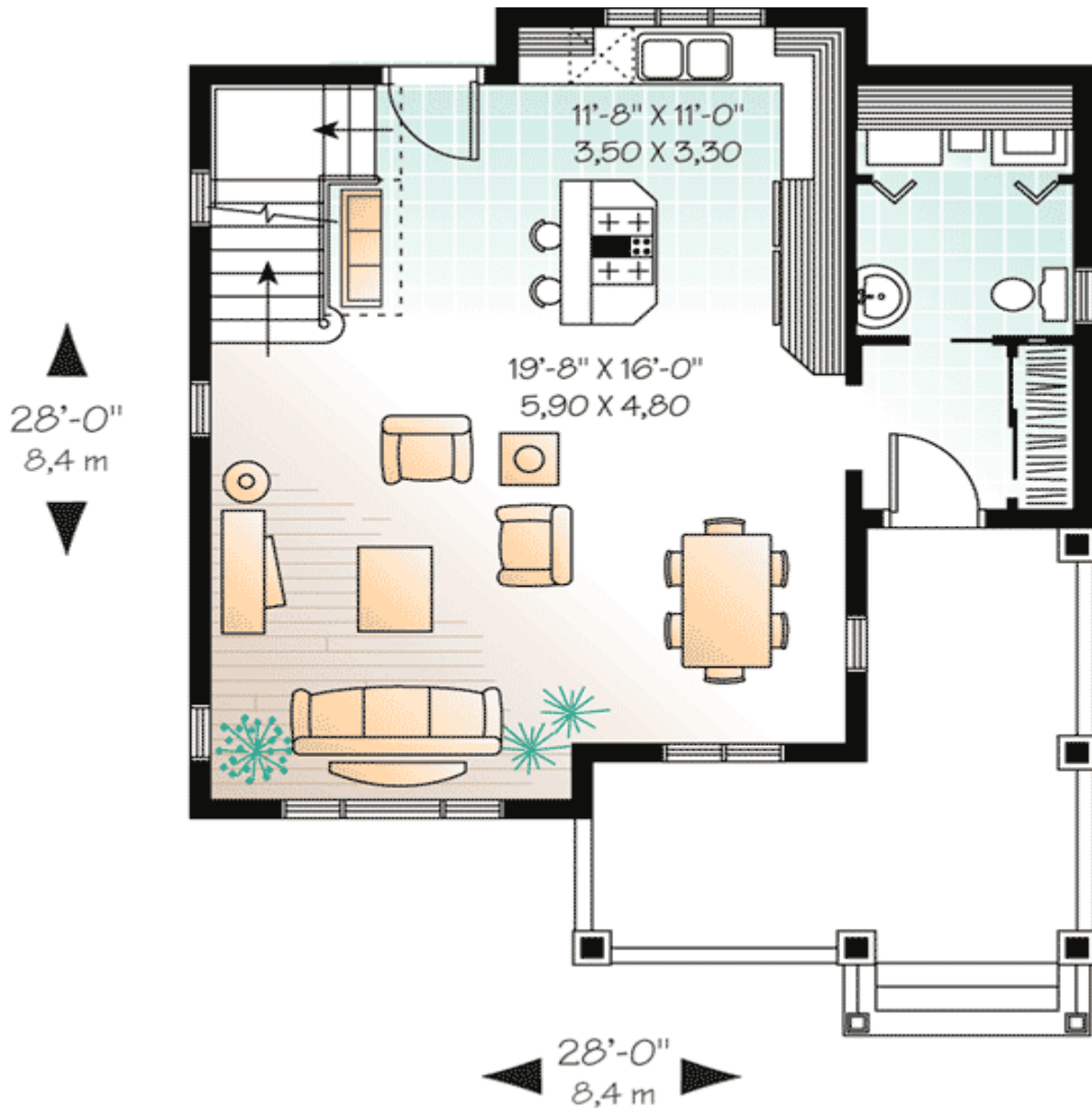
Standard Foundations: Basement

Alternate Foundations: Slab (\$295), Crawl (\$295)

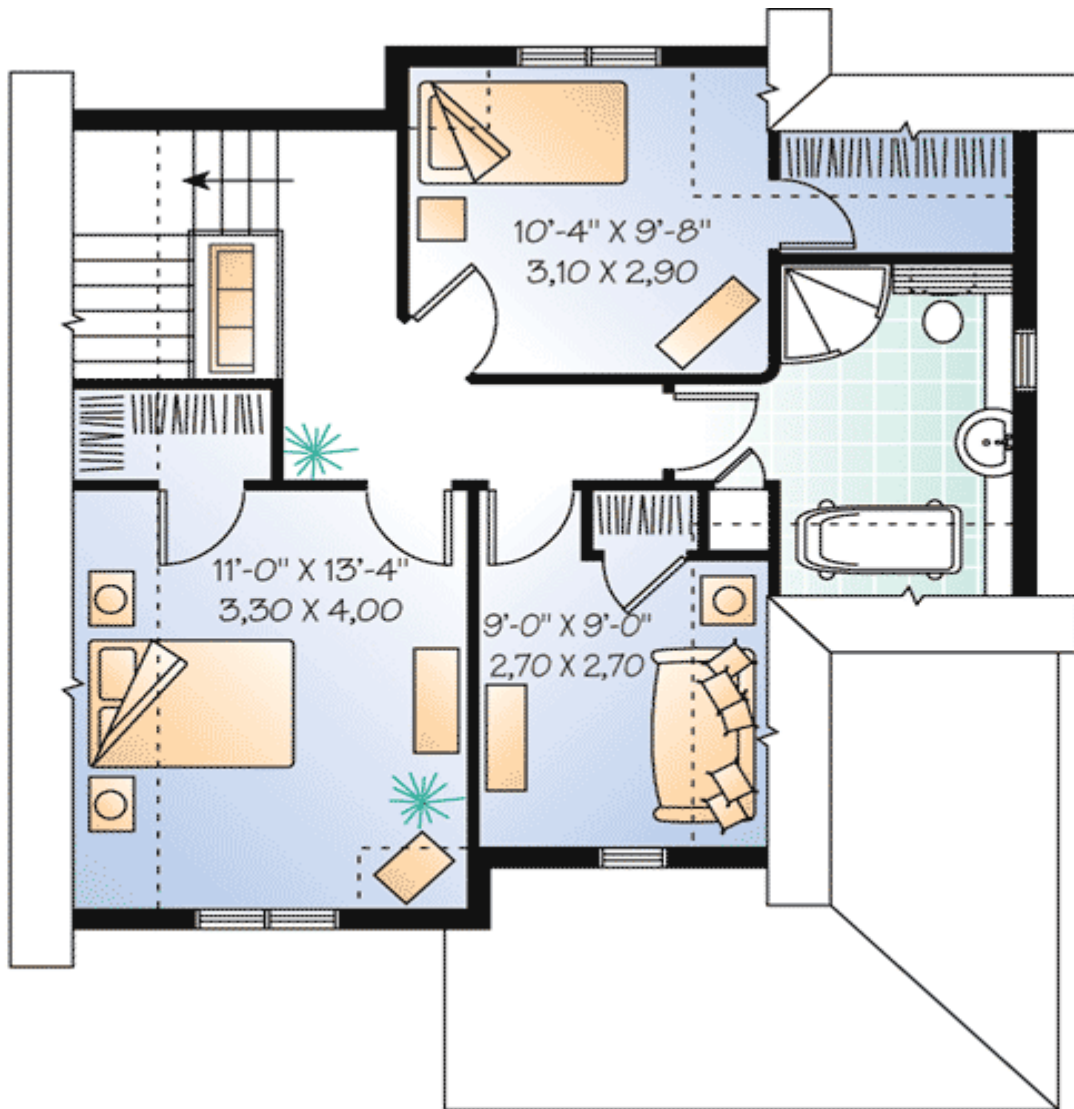
Special Features: Photo Gallery, Narrow Lot, CAD Available, PDF

One Set	Five Sets	Eight Sets	Reproducible	PDF File	CAD
\$549	\$589	\$619	\$799	\$799	\$1,490

Main Level



2nd Level



Elevation #2



Rear View

