

# Architectural Designs ...selling quality house plans for over 30 years.

Plan W43000PF: Adorable Cottage



House plans are Copyright © 2009 by our architects and designers.

- "Storybook" comes to mind when viewing this adorable cottage home plan with steep pitched roof and mullioned windows.
- A two-story living room with fireplace has access to the side porch and a compact kitchen provides for efficiency.
- The first floor bedroom has window seats set in a bay area while the second floor master suite enjoys a walk-in closet, built-in cabinets and wood beams. The laundry is located on this level.
- Ceilings: 8' standard; 20'5" living room.
- Optional Detached Garage: Need a detached garage to match this plan? See garage plan 43038PF.
- Related Plan: For a smaller version, see house plan 43043PF (965 sq. ft.).

Style: Cottage, European, Tudor, Victorian

Total Living Area: 1183

Main Flr.: 772

2nd Flr.: 411

Front Porch: 106 sq. ft.

Total Square Feet: 1,289 sq. ft.

Bedrooms: 2

Full Bathrooms: 2

Width: 28'

Depth: 28'7"

Maximum Ridge Height: 32'7"

Exterior Walls: 2x4

Ceiling Height:

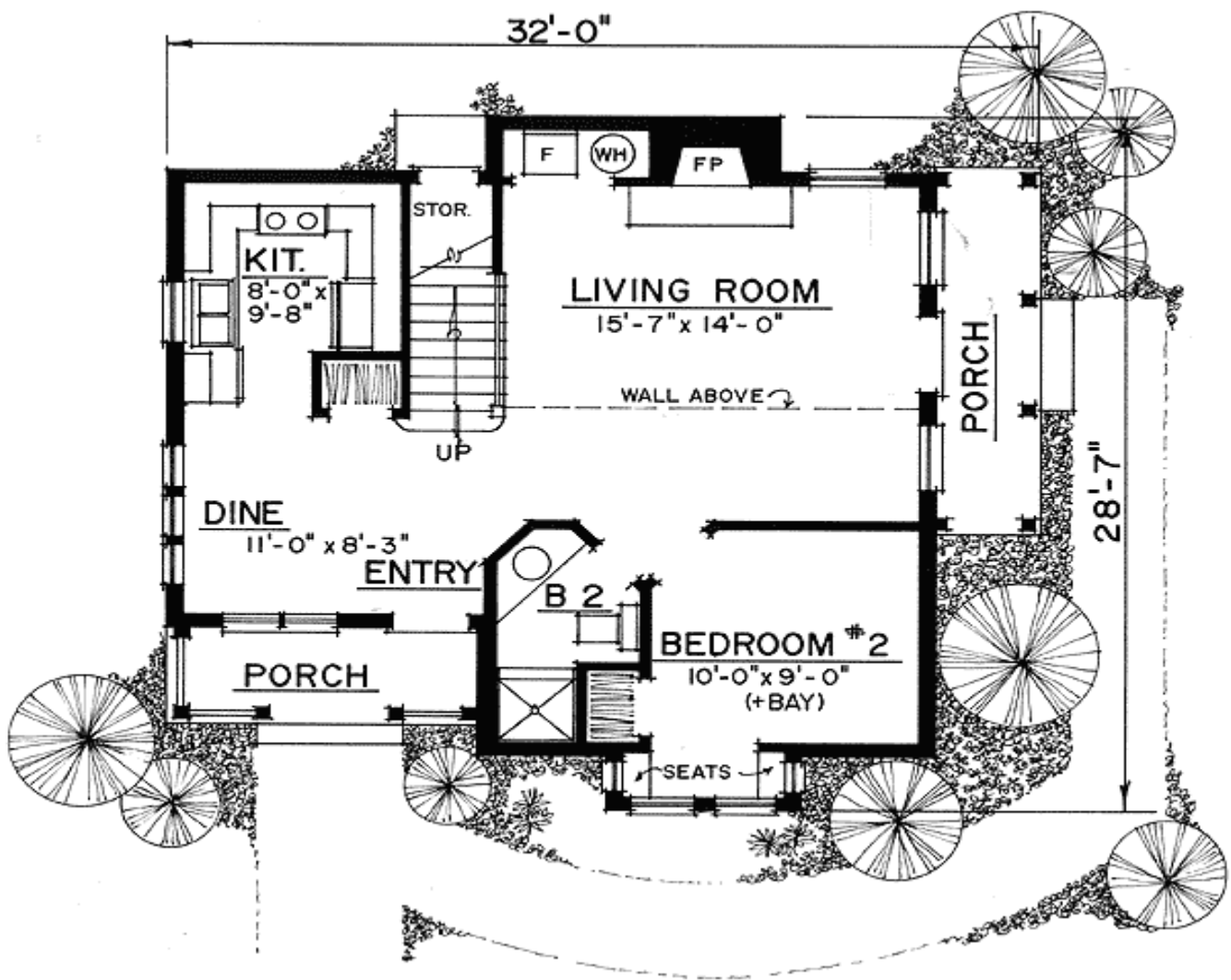
Main Floor: 8'

Other: 20'5" Living Room

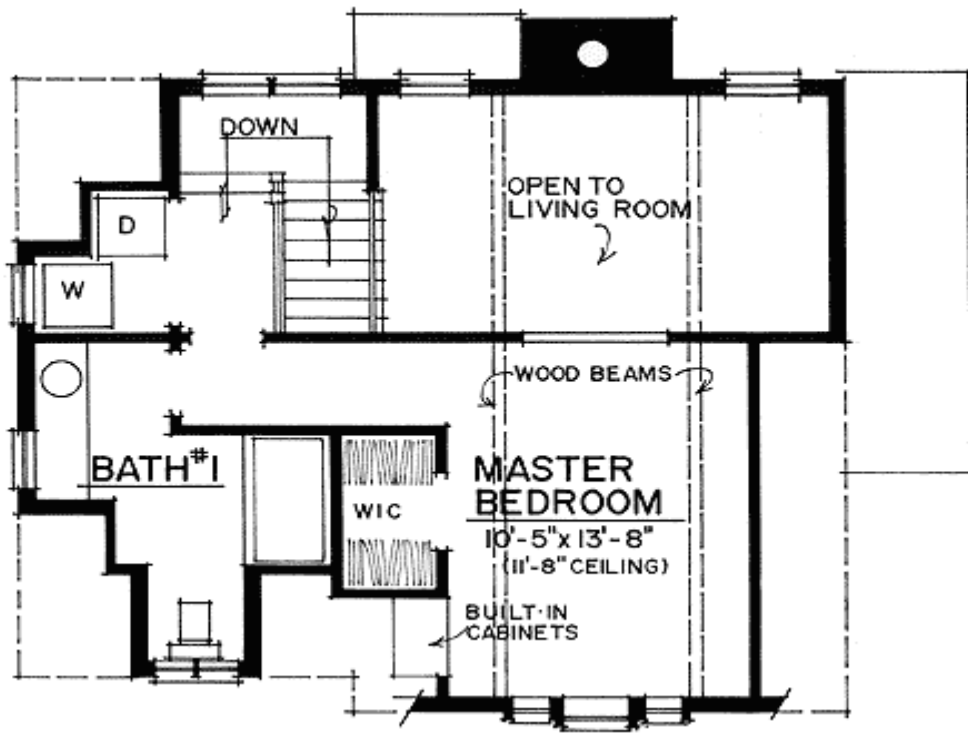
Standard Foundations: Crawl  
Special Features: Narrow Lot, PDF

One Set	Five Sets	Eight Sets	Reproducible	PDF File
\$395	\$460	\$505	\$605	\$605

## Main Level



2nd Level



Rear View

