

Architectural Designs ...selling quality house plans for over 30 years.

Plan W35046GH



House plans are Copyright © 2009 by our architects and designers.

Style: Craftsman, Metric

Total Living Area: 2177

Main Flr.: 1827

2nd Flr.: 330

Bonus: 458 sq. ft.

Total Square Feet: 3,419 sq. ft.

Attached Garage: 3 Car, 804 sq. ft.

Bedrooms: 2

Full Bathrooms: 2

Width: 85'8"

Depth: 51'

Maximum Ridge Height: 25'5"

Exterior Walls: ICF

Ceiling Height:

Main Floor: 8'9"

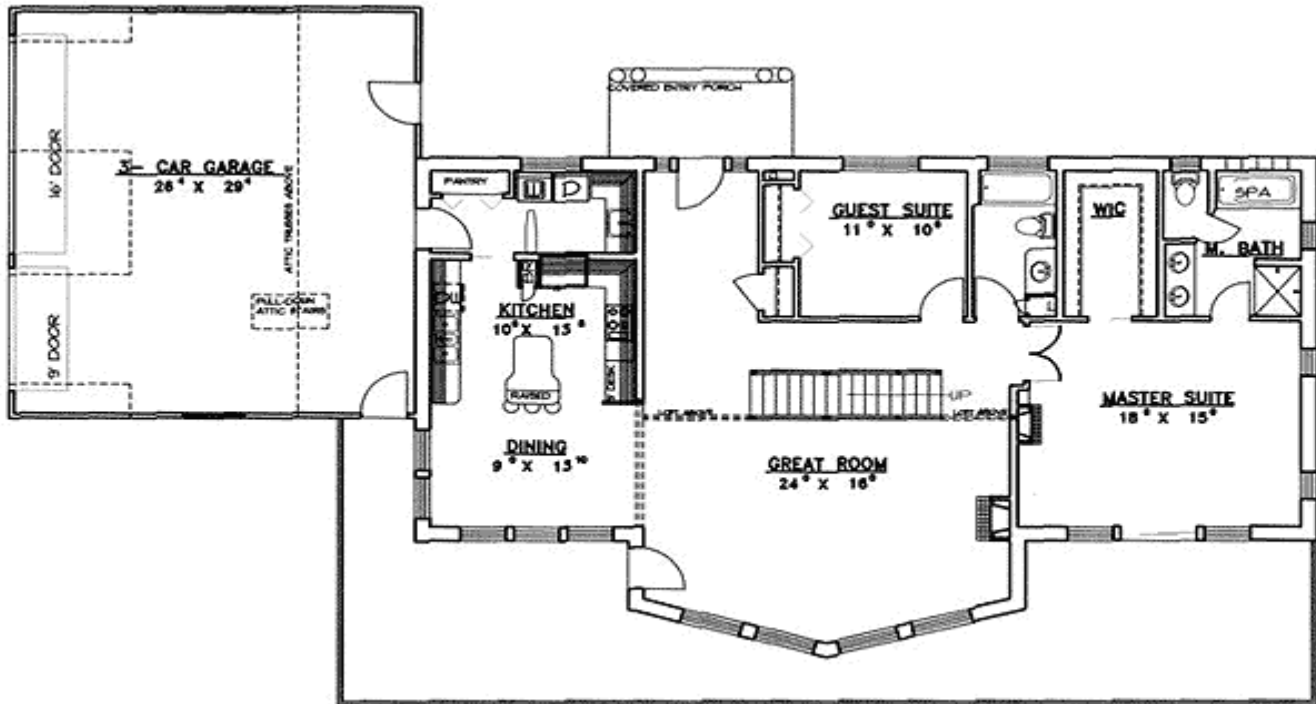
2nd Floor: 9'8"

Standard Foundations: Slab, Crawl

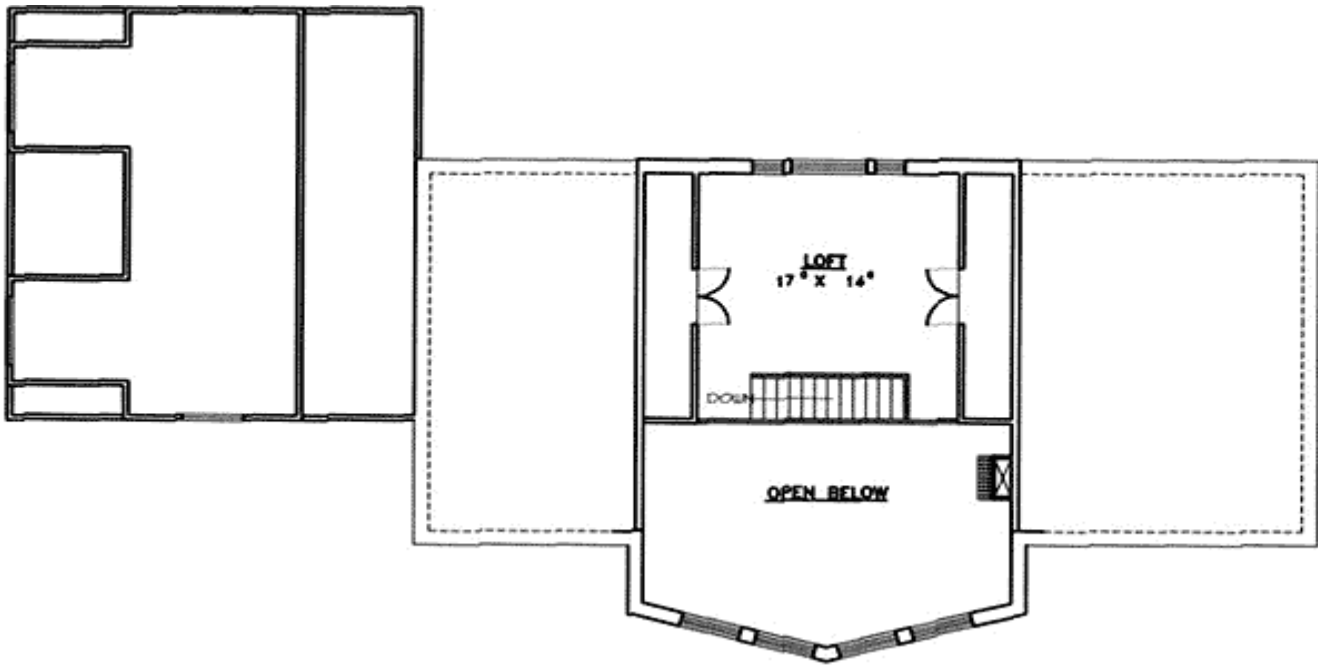
Special Features: Bonus Room, CAD Available, PDF, 1st Floor Master Suite, Corner Lot, Loft

Five Sets	Eight Sets	Reproducible	PDF File	CAD
\$625	\$710	\$650	\$850	\$850

Main Level



2nd Level



Sides/Rear



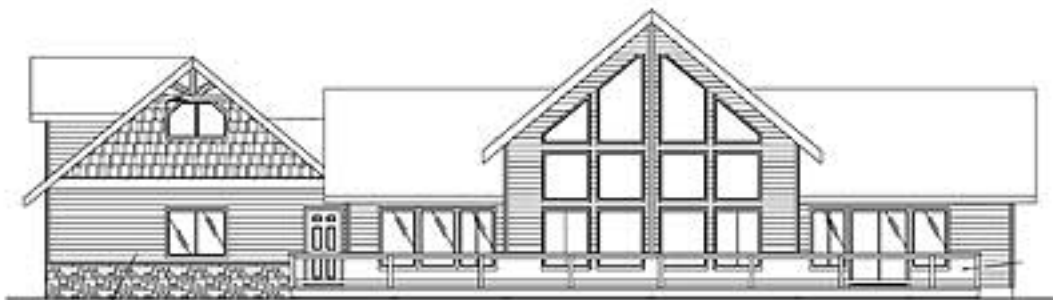
FRONT ELEVATION



LEFT ELEVATION



RIGHT ELEVATION



REAR ELEVATION