

Architectural Designs ...selling quality house plans for over 30 years.

Plan W6712MG: Traditional Farmhouse Ranch



House plans are Copyright © 2009 by our architects and designers.

- This sprawling traditionally styled ranch home plan is just loaded with features.
- The master suite is off in a wing of its own, and boasts a beautifully appointed bathroom complimented by a very spacious walk-in closet.
- A family entry at the side leads into a big laundry/mudroom area with a powder room nearby.
- The wonderful open planning of the four living areas makes the home seem huge and a ten foot high great room ceiling, the fireplace, and a recess for an entertainment center make this room spectacular.
- To the right are two large bedrooms and a bath.
- For storage, in addition to the full basement, a set of pull-down stairs provides access to an attic loft over the garage.

Style: Canadian, Country, Farmhouse, Ranch

Total Living Area: 1734

Main Flr.: 1734

Basement Unfinished: 1,842 sq. ft.

Front Porch: 132 sq. ft.

Deck: 252 sq. ft.

Total Square Feet: 4,488 sq. ft.

Attached Garage: 2 Car, 528 sq. ft.

Bedrooms: 3

Full Bathrooms: 2

Half Bathrooms: 1

Width: 66'

Depth: 48'

Maximum Ridge Height: 22'

Exterior Walls: 2x6

Ceiling Height:

Main Floor: 8'

Standard Foundations: Basement

Special Features: 1st Floor Master Suite, PDF

One Set
\$450

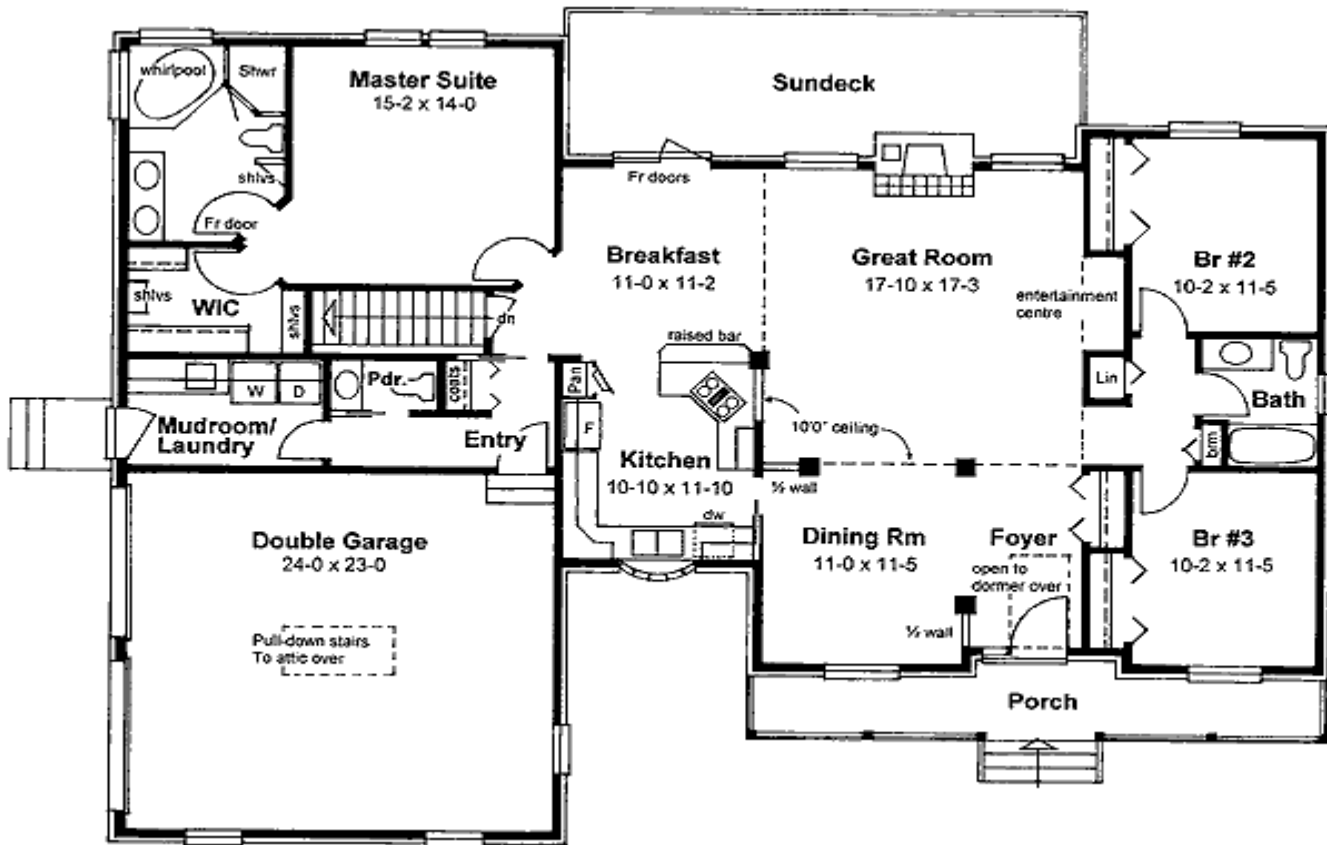
Five Sets
\$505

Eight Sets
\$550

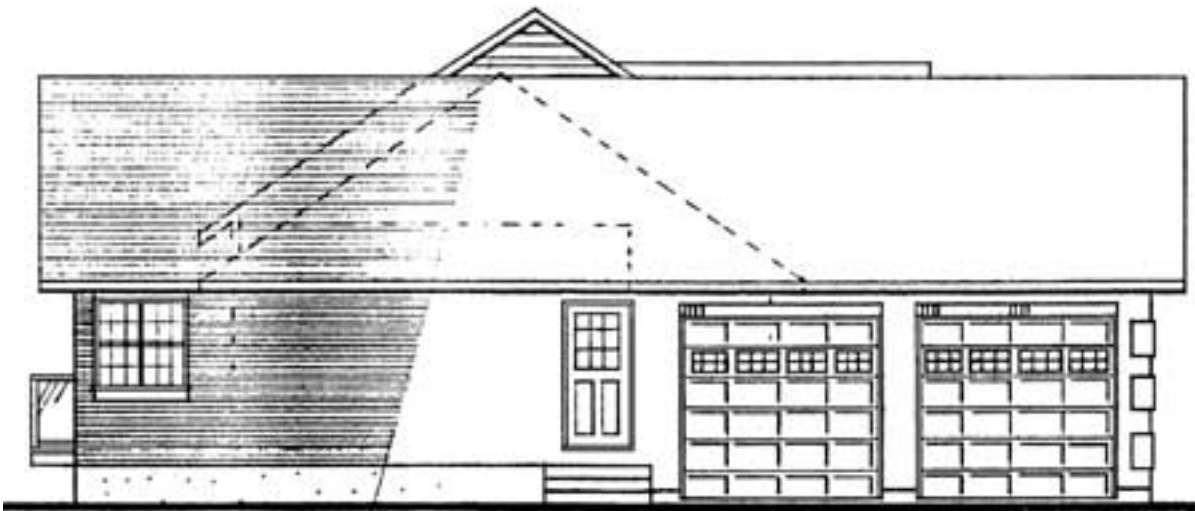
Reproducible
\$670

PDF File
\$670

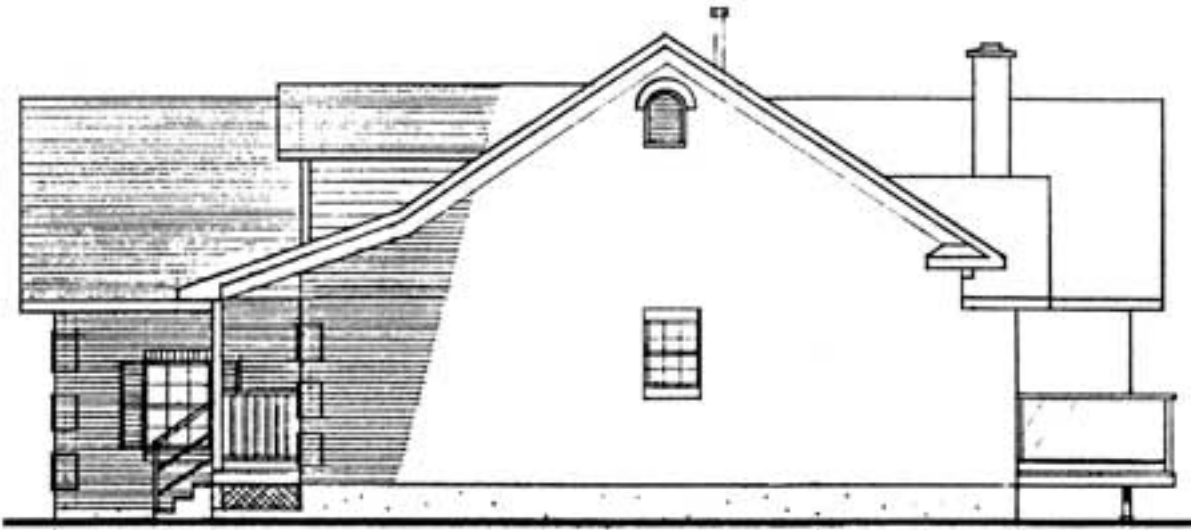
Main Level



Left Side



Right Side



Rear View

