

Architectural Designs ...selling quality house plans for over 30 years.

Plan W5346Q: Four Bedrooms And Extras



House plans are Copyright © 2009 by our architects and designers.

- Brick trim, hipped roof lines and a bay window invite you to the sheltered entry of this two-story home. Although less than 2,400 square feet in area, the home contains four bedrooms and a den, plus a variety of extras.
- The Y-shaped foyer directs traffic smoothly. A pocket door keeps the formal dining area separate from the casual family area, while a bay window and fireplace add appeal to the living room.
- Just behind the dining area, you find a sunny vaulted nook and a good-sized pantry. The wrap-around kitchen boasts an eating bar that separates it from the family room with its wood stove.
- A utility room-mud room is placed between the den and bedroom two, both served by a full bath in the hall. The master suite features a skylit dressing area, walk-in closet and compartmented bath.
- Open-railed stairs in the family room access the bath and two bedrooms upstairs.
- Foundation: crawl space.

Style: Contemporary

Total Living Area: 1960

Main Flr.: 1158

2nd Flr.: 802

Basement Unfinished: 728 sq. ft.

Attached Garage: 2 Car, 715 sq. ft.

Bedrooms: 3

Full Bathrooms: 2

Half Bathrooms: 1

Width: 42'

Depth: 44'

Maximum Ridge Height: 33'6"

Exterior Walls: 2x6

Ceiling Height:

Standard Foundations: Crawl

Special Features: Narrow Lot, Sloping Lot

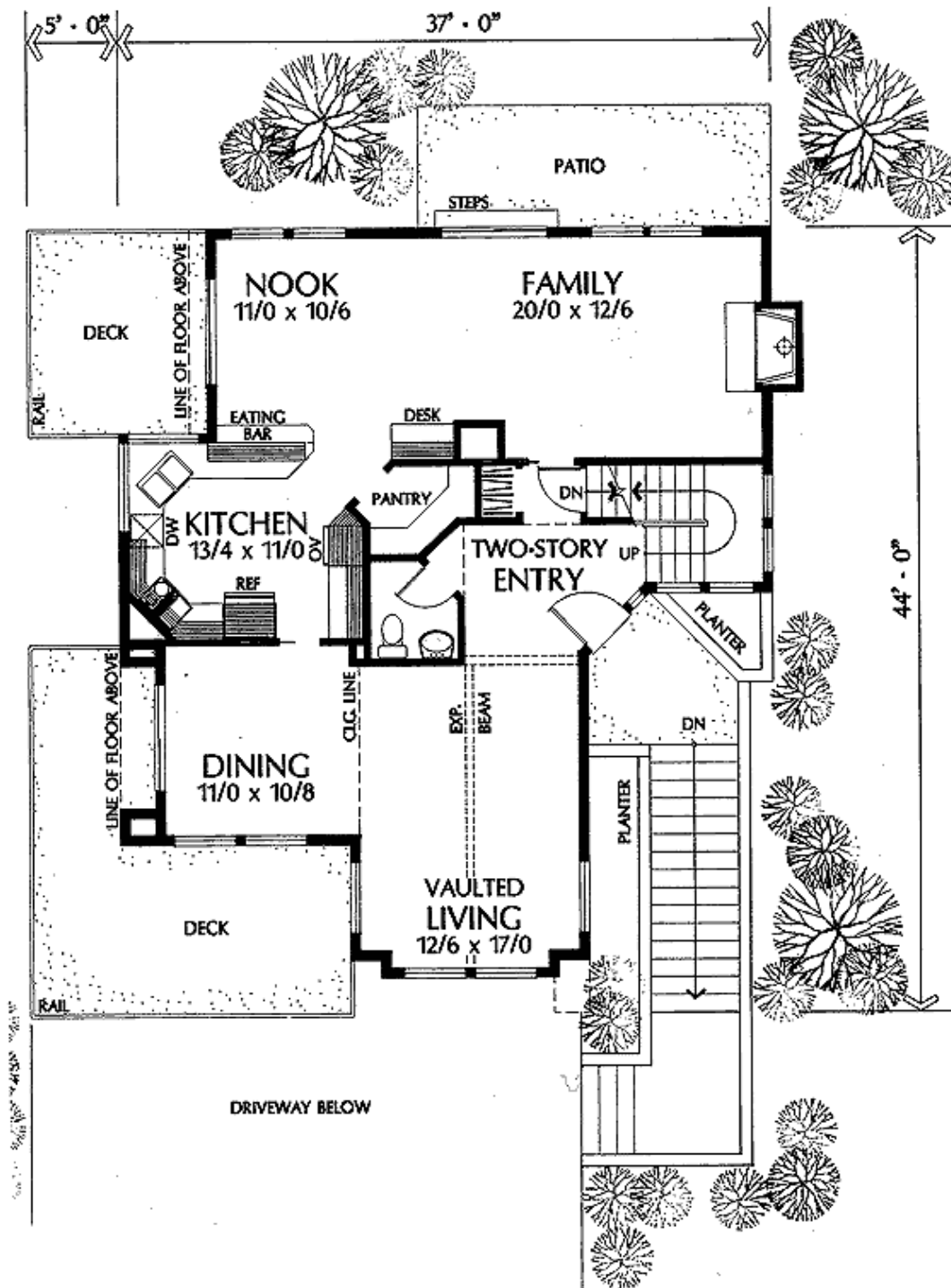
One Set
\$450

Five Sets
\$505

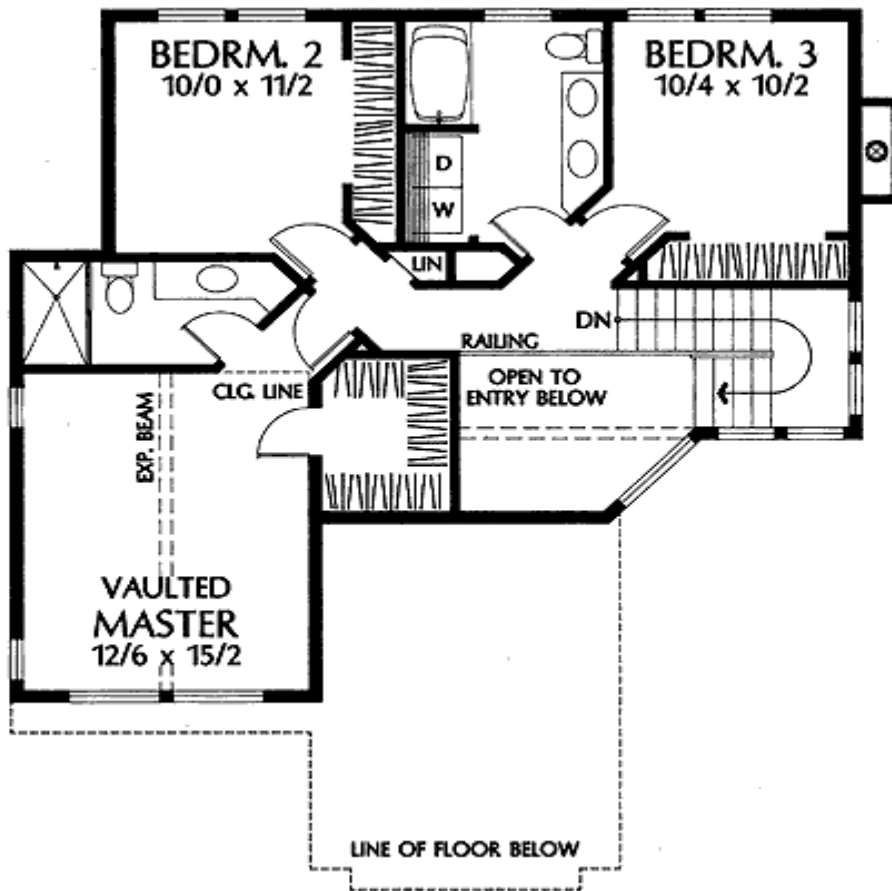
Eight Sets
\$550

Reproducible
\$670

Main Level



2nd Level



Lower Level

