

Plan W59217ND: Enchanting Traditional Home Plan



House plans are Copyright © 2009 by our architects and designers.

- This enchanting home plan incorporates the best floor planning all in one level.
- The great room, which is convenient for those family gatherings that need extra room, is highlighted by a fireplace and a nine foot boxed ceiling.
- Easy access from the kitchen to the dining room makes hosting a dinner party more convenient.
- Entertain friends and family during the summer out on the rear grilling porch.
- As evening approaches, retreat to your master bath complete with large walk-in closet, double vanities, and corner whirlpool bath. Then move to the spacious master bedroom with its 10-foot boxed ceiling.
- Related Plan: For a craftsman version of this house plan, see 59740ND. Interested in another traditional version? See house plan 59218ND.

Style: Traditional

Total Living Area: 1930

Main Flr.: 1930

Front Porch: 144 sq. ft.

Rear Porch: 213 sq. ft.

Total Square Feet: 2,796 sq. ft.

Attached Garage: 2 Car, 509 sq. ft.

Bedrooms: 4

Full Bathrooms: 2

Width: 52'

Depth: 71'6"

Maximum Ridge Height: 26'8"

Exterior Walls: 2x4

Ceiling Height:

 Main Floor: 9'

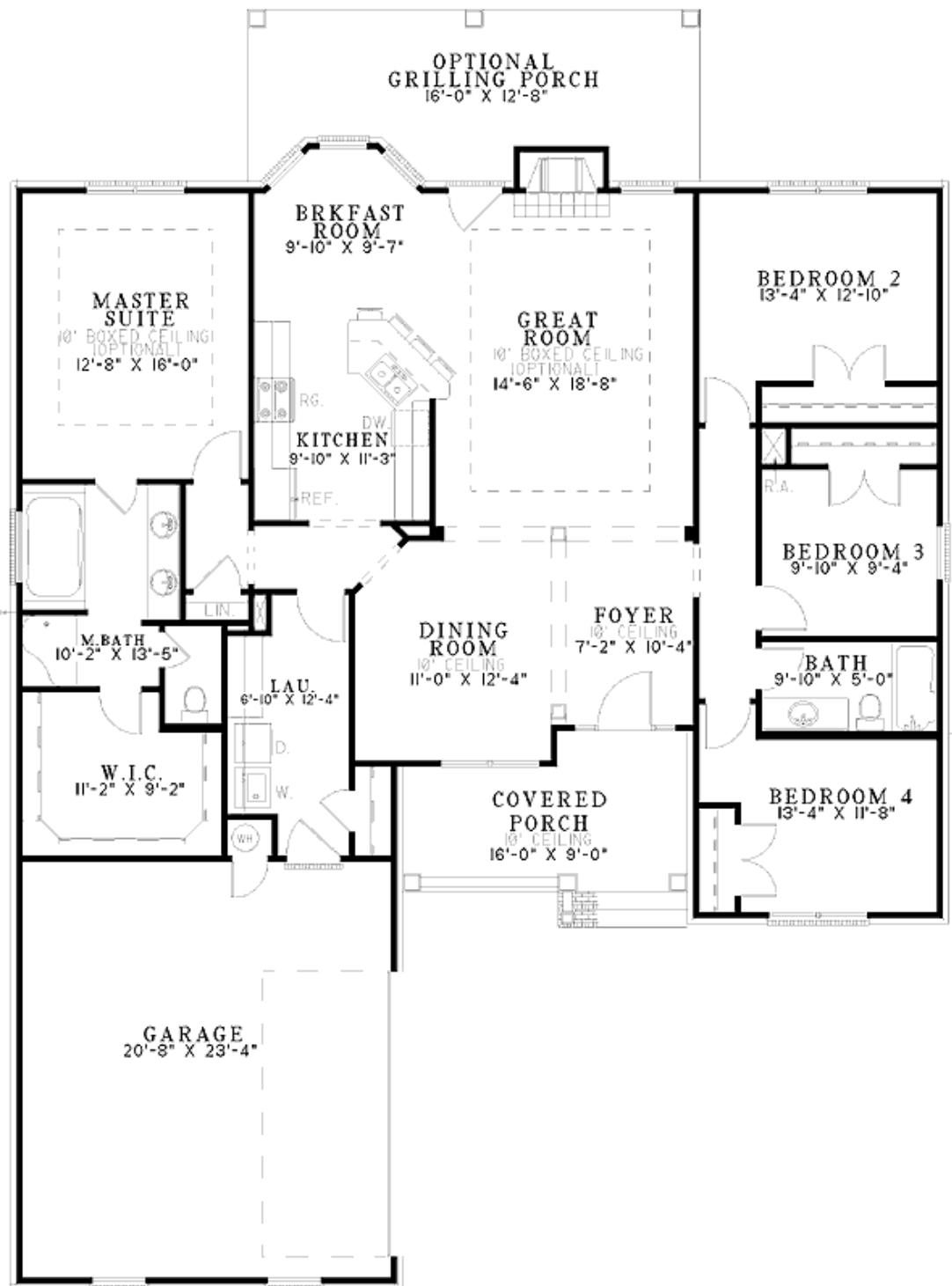
Standard Foundations: Slab, Crawl

Alternate Foundations: Walkout (\$250), Basement (\$250)

Special Features: 1st Floor Master Suite, PDF, CAD Available

One Set	Five Sets	Eight Sets	Reproducible	PDF File	CAD
\$545	\$610	\$640	\$790	\$790	\$1,350

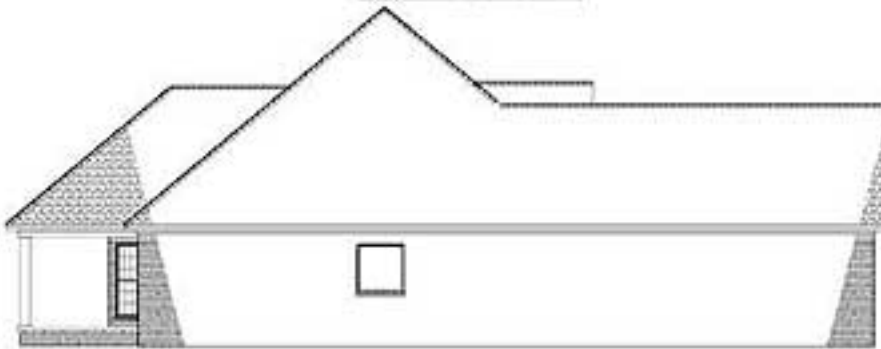
Main Level



Sides/Rear



REAR ELEVATION



LEFT ELEVATION



RIGHT ELEVATION