

Architectural Designs ...selling quality house plans for over 30 years.

Plan W5038CZ: Lots of Walk-Ins



House plans are Copyright © 2009 by our architects and designers.

- A regal entry with a gable and lots of glass is the eye-catching focus of this upscale Colonial design.
- Bracketing the two-story entry are a formal dining room and a study. Past the graceful angled staircase lies the spacious family living area. Here, the great room boasts a fireplace flanked by built-ins, while the sunroom is in a large bay. An angled breakfast bar and a walk-in pantry are features of the kitchen. A home office and a laundry room complete this area.
- Upstairs, a romantic Romeo-and-Juliet balcony in the master suite overlooks the entry. Other features of the master suite include a tray ceiling, a sitting area and a fireplace that can be enjoyed from both the bedroom and the master bath. The bath contains a walk-in closet, a garden tub, a separate shower and knee space between two vanities.
- The bath off one family bedroom can also be used by the bonus bedroom when it is completed. The other bedrooms each have direct access to the third full bath. Walk-in closets are found in all bedrooms.
- Foundation: basement.

Style: Colonial, Traditional

Total Living Area: 2834

Main Flr.: 1454

2nd Flr.: 1380

Bonus: 240 sq. ft.

Total Square Feet: 3,975 sq. ft.

Attached Garage: 3 Car, 901 sq. ft.

Bedrooms: 5, 4

Full Bathrooms: 3

Half Bathrooms: 1

Width: 64'8"

Depth: 47'

Maximum Ridge Height: 29'

Exterior Walls: 2x4

Optional Exterior Walls: 2x6 \$150

Ceiling Height:

Main Floor: 9'

2nd Floor: 8'

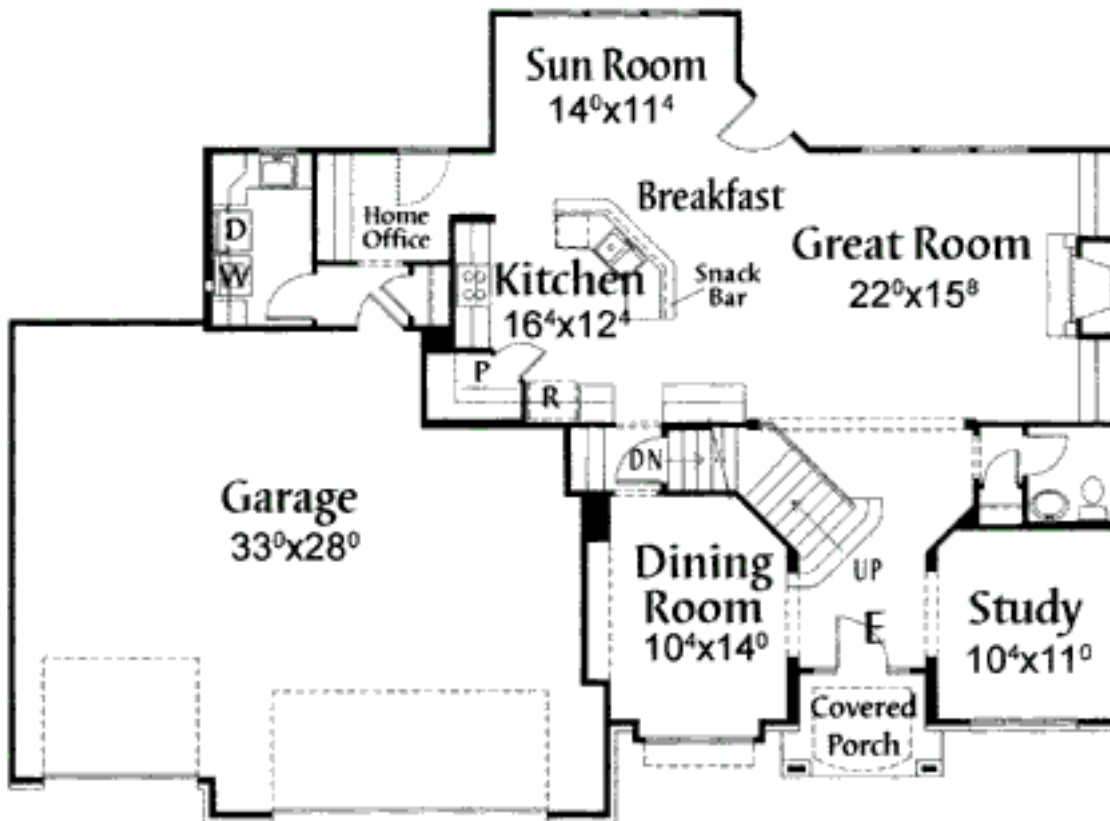
Standard Foundations: Basement

Alternate Foundations: Slab (\$300), Walkout (\$125), Crawl (\$200)

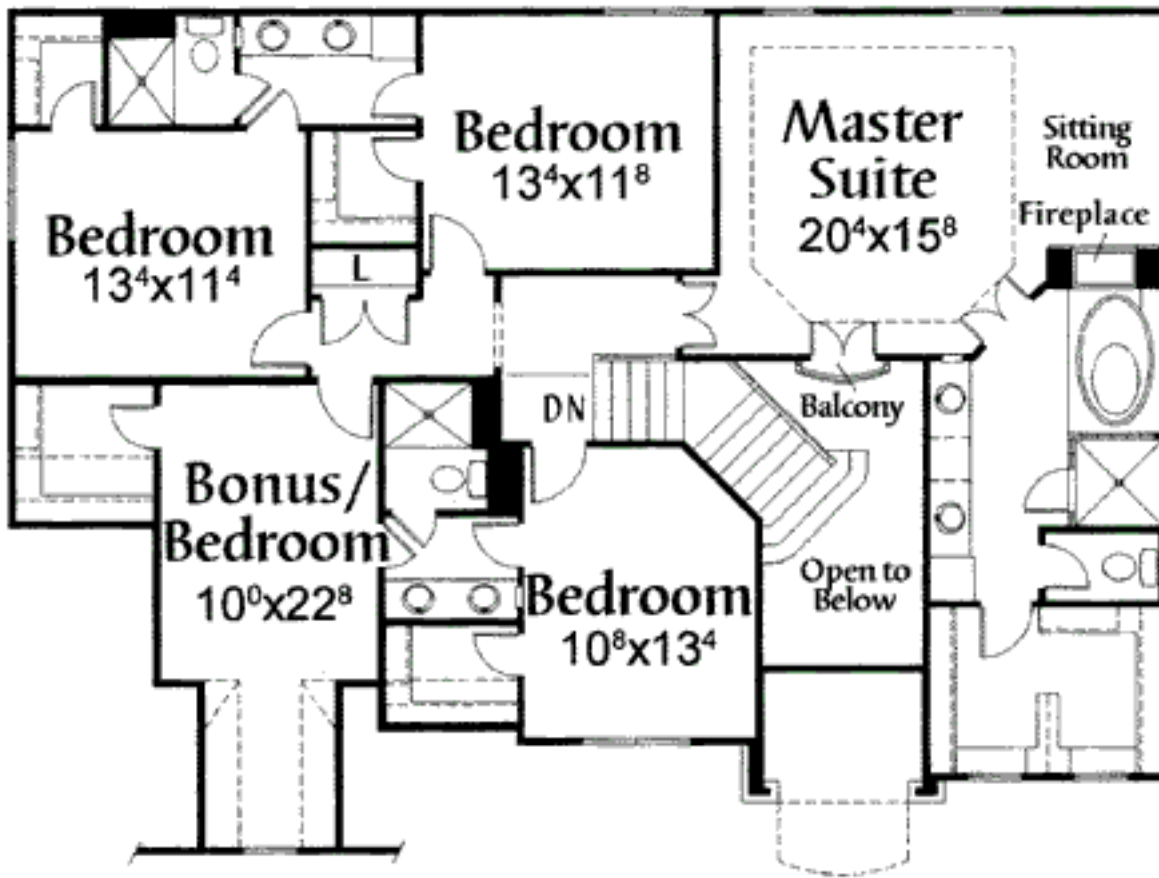
Special Features: CAD Available, Bonus Room, Butler Walk-in Pantry, Den-Office-Library-Study, Jack & Jill Bath, Wrap Around Porch, MBR Sitting Area

One Set	Five Sets	Eight Sets	Reproducible	CAD
\$745	\$895	\$985	\$895	\$2,500

Main Level



2nd Level



Rear View

