

Architectural Designs ...selling quality house plans for over 30 years.

Plan W35312GH: Great Views



House plans are Copyright © 2009 by our architects and designers.

- This open-concept floor plan, perfect for a sloping lot, imparts an air of spaciousness. A loft and volume ceilings, in addition to a multitude of windows, highlight the sense of openness in this house plan.
- The covered front porch extends functional spaces to the outside, as does the rear deck.
- The chef will enjoy the walk-in pantry and corner windows. The peninsula bar creates an efficient space for dining and socializing.
- Conveniently located on the main floor, the master bedroom has his and her closets.
- A loft overlooking the great room, two bedrooms and a shared bath plus storage round out the second floor.
- Related Plans: For alternate attached garage options, see 35352GH and 35392GH.
- Need a drive-under garage? See plans 35313GH (side-entry), 35386GH (3-car), 35313GH and 35393GH.
- No garage need? See 35259GH, 35108GH, 35324GH and 35165GH with a finished lower level with a fireplaced rec room, wet bar, storage and office space.

Style: Contemporary, Metric, Mountain, Northwest, Vacation

Total Living Area: 2750

Main Flr.: 1796

2nd Flr.: 954

Basement Unfinished: 1,796 sq. ft.

Attic: 632 sq. ft.

Total Square Feet: 6,056 sq. ft.

Attached Garage: 2 Car, 878 sq. ft.

Bedrooms: 3

Full Bathrooms: 2

Half Bathrooms: 1

Width: 104'4"

Depth: 47'3"

Maximum Ridge Height: 25'7"

Exterior Walls: 2x6

Ceiling Height:

Main Floor: 9'

2nd Floor: 8'

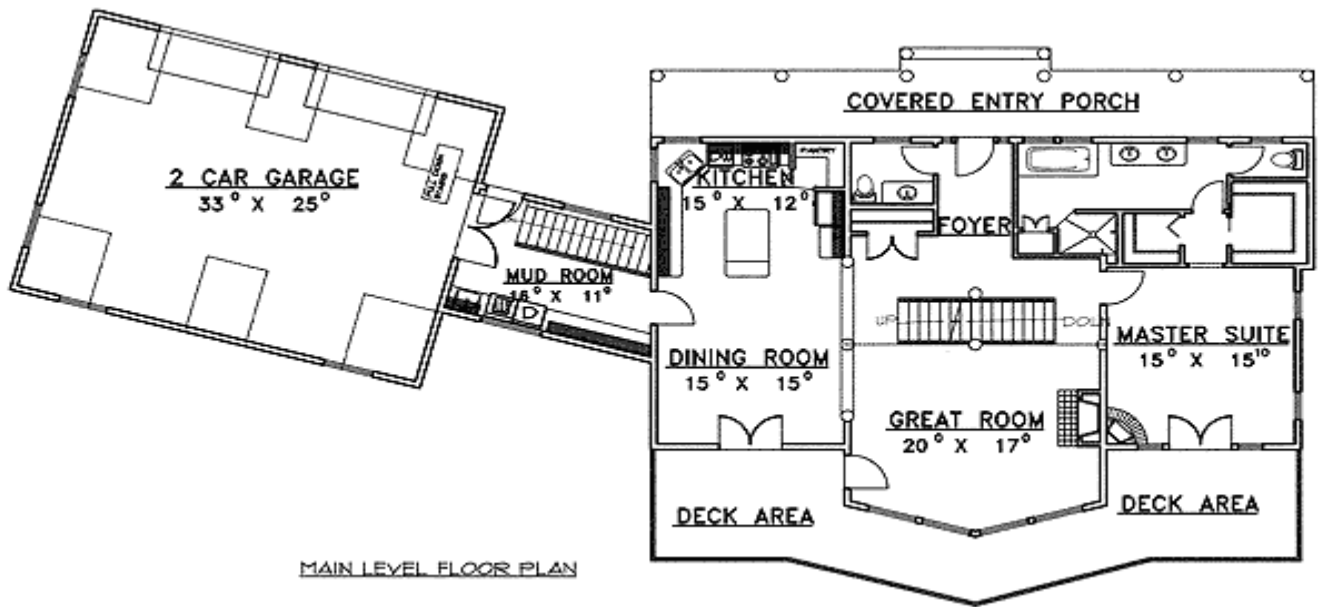
Other: 23'11" Great Room; 5'6"-13'11" Loft

Standard Foundations: Daylight

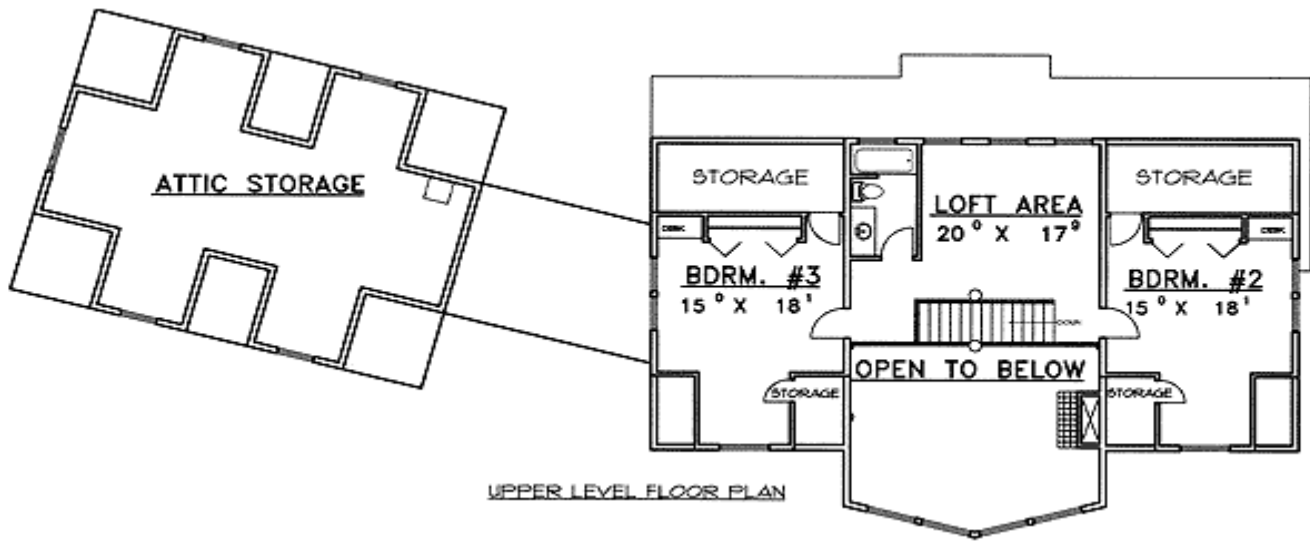
Special Features: Loft, Wrap Around Porch, Sloping Lot, PDF, CAD Available, 1st Floor Master Suite, Photo Gallery

Five Sets	Eight Sets	Reproducible	PDF File	CAD
\$725	\$820	\$750	\$900	\$900

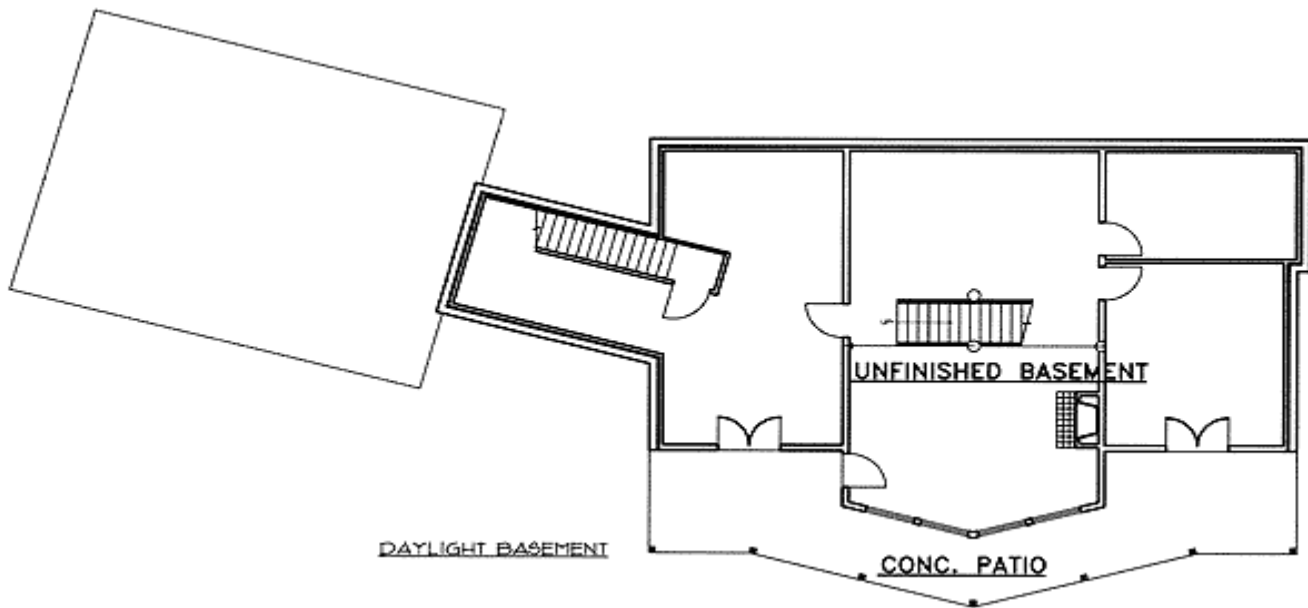
Main Level



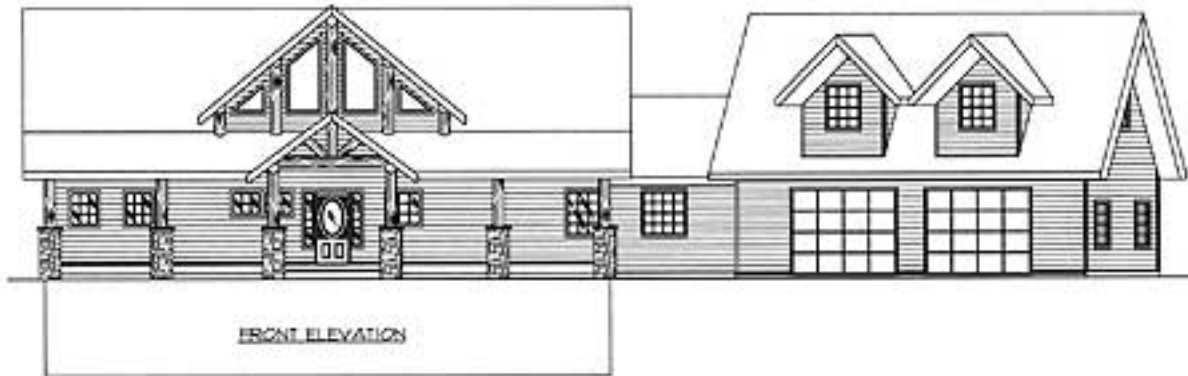
2nd Level



Lower Level



Elevation #2



Great Room

