

Architectural Designs ...selling quality house plans for over 30 years.

Plan W33543EB: Raised Beach Style Design



House plans are Copyright © 2009 by our architects and designers.

- Balance and symmetry are seen in this grand design when viewing its streetscape. A raised covered entry is centered in the home's layout, while garage doors and balconies are placed on each side of the graceful entry staircase. A blend of stucco and barrel tile roofing give the home an old world Mediterranean feel.
- The raised layout is perfect for low-lying waterfront or sloping regions where the main levels of the home need to be elevated.
- On the ground level, plenty of storage and bonus spaces make future expansion easy. The ground level foyer has a staircase and an elevator to the main levels.
- The grand foyer opens up to the parlour straight ahead. The parlour and the leisure room are open so the spaces can expand for entertaining on a grand level if desired. A glass curved wall opens to the rear yard views and rear verandah.
- The kitchen, which opens to the formal dining and the rear facing nook, has plenty of counter space and easily serves the entire living area.
- Also on the main floor are two guest suites, both having access to private front facing balconies.
- A staircase and elevator also lead to the upper floor. The loft is great for a television area or computer space.
- Past the overlook and two-story parlour below is the master area. The oversized bedroom has a step ceiling, separate sitting retreat and access to a private master balcony. A gracious wardrobe closet is perfect for both his and her clothes storage. In the bath, his and her vanities, a soaking tub and a huge shower provide a pampered feel.
- Across from the master suite is a private office and study with additional closets for storage.
- This grand estate home, with its balanced exterior and flowing spaces, is truly a one-of-a-kind custom residence.

Style: Beach, European, Florida

Total Living Area: 4644

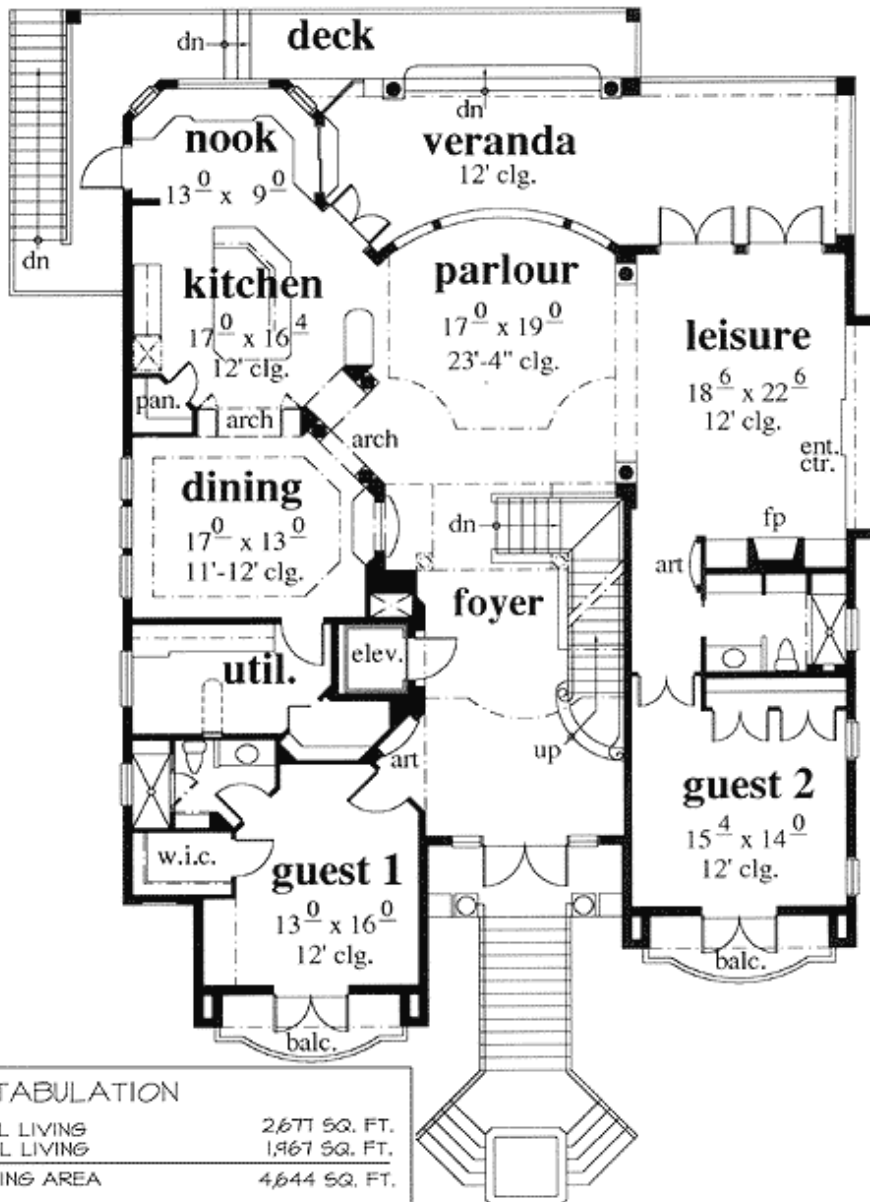
Main Flr.: 2677

2nd Flr.: 1967

Basement Unfinished: 523 sq. ft.
Balcony/Veranda: 1,057 sq. ft.
Entry: 71 sq. ft.
Veranda/Balconies/Walkway/Upper Deck:
Total Square Feet: 8,998 sq. ft.
Attached Garage: 3 Car, 2,703 sq. ft.
Bedrooms: 3
Full Bathrooms: 4
Width: 60'2"
Depth: 85'11"
Maximum Ridge Height: 51'4
Exterior Walls: 2x4 or 2x6 or Block
Ceiling Height:
Standard Foundations: Slab
Special Features: PDF, Den-Office-Library-Study, Elevator, CAD Available, Loft, MBR Sitting Area

Reproducible	PDF File	CAD
\$2,322	\$2,372	\$2,522

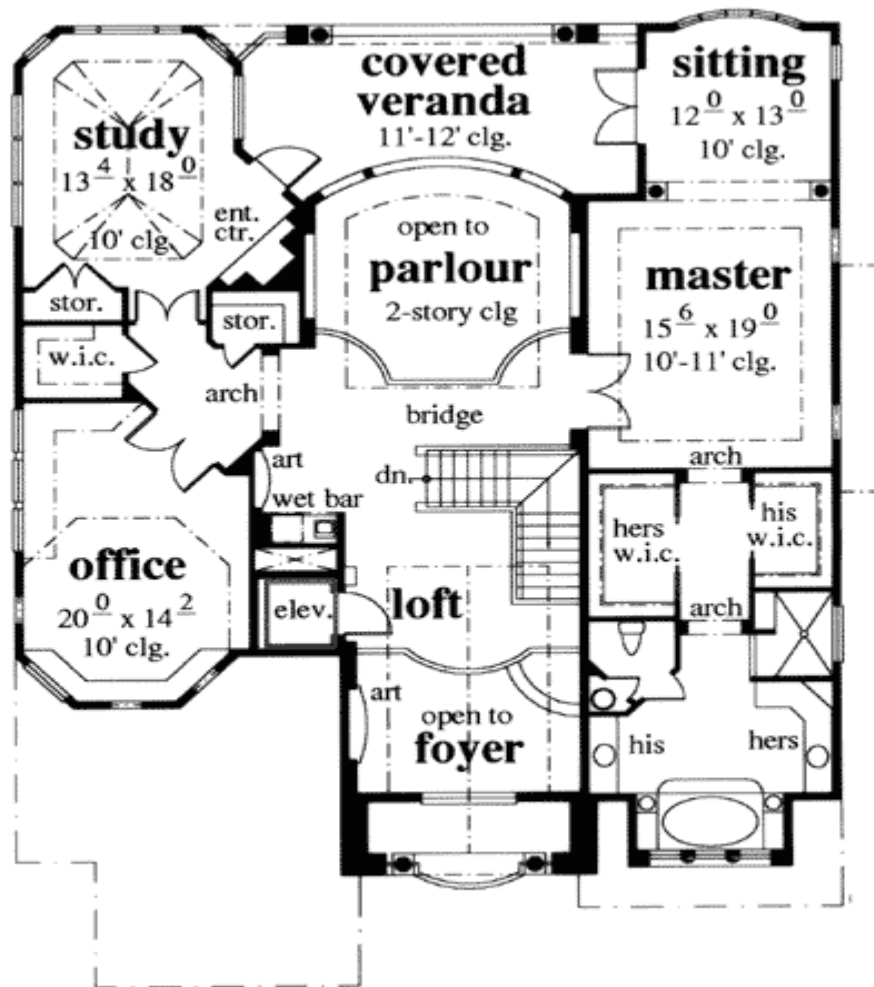
Main Level



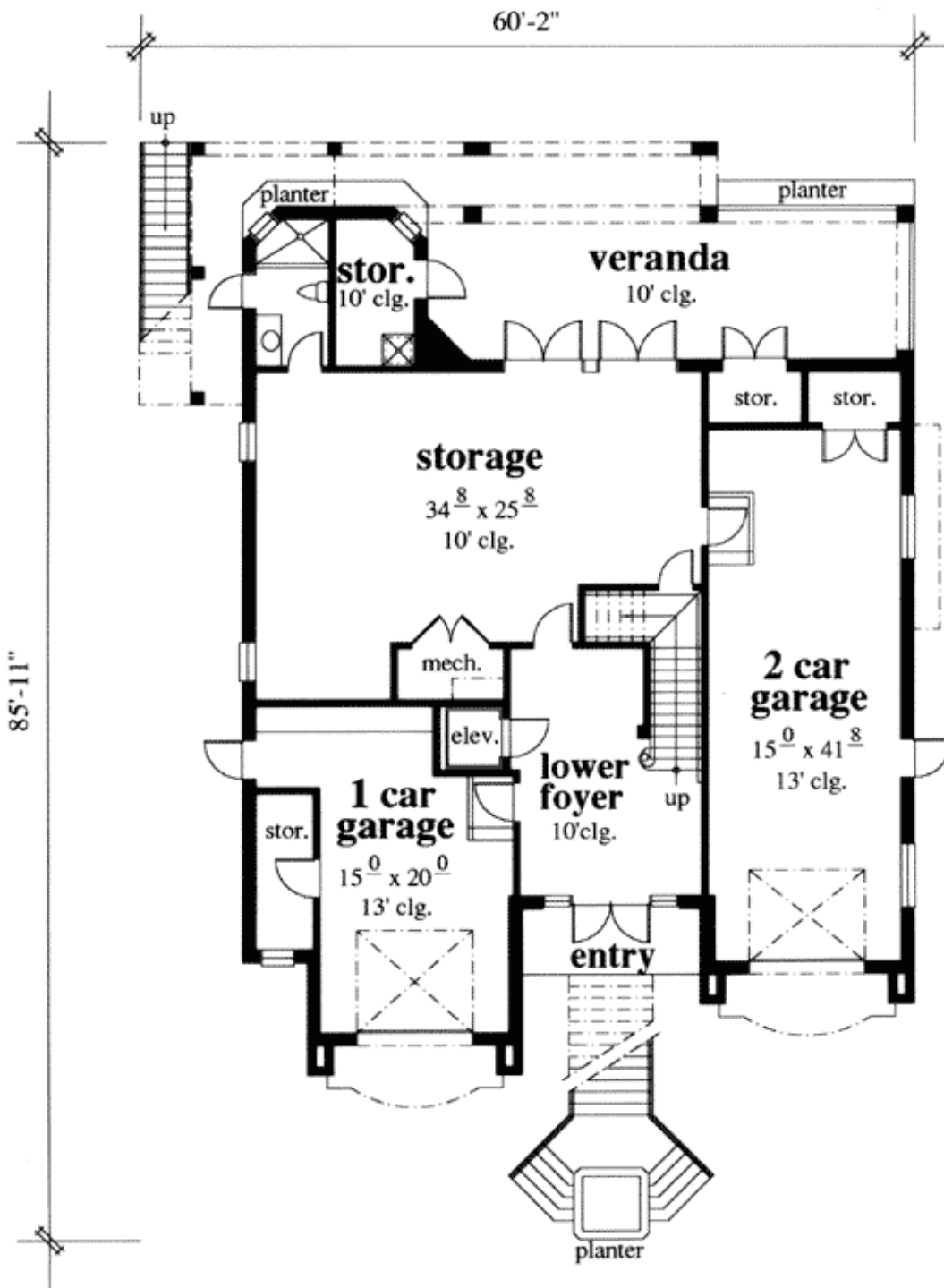
AREA TABULATION

2ND. LEVEL LIVING	2,677 SQ. FT.
3RD. LEVEL LIVING	1,467 SQ. FT.
TOTAL LIVING AREA	4,144 SQ. FT.
1ST. LEVEL (Gar., Stor., Bath)	2,703 SQ. FT.
1ST. LEVEL LANAI	452 SQ. FT.
1ST. LEVEL ENTRY	71 SQ. FT.
VERANDA (not including walkway)	422 SQ. FT.
BALCONIES (2nd. level)	106 SQ. FT.
WALKWAY (by kitchen)	264 SQ. FT.
ENTRY	71 SQ. FT.
UPPER DECK (3rd. Level)	260 SQ. FT.
TOTAL	8,998 SQ. FT.

2nd Level



Lower Level



Rear View



Rear elevation