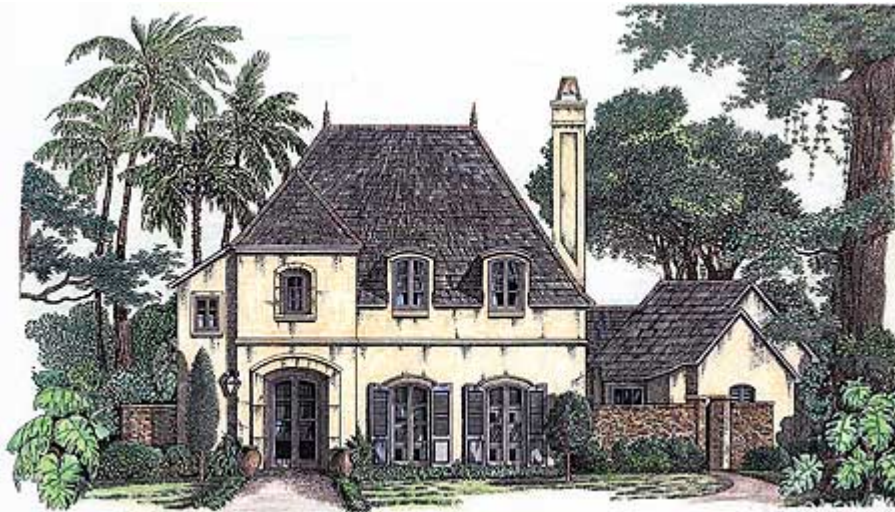


# Architectural Designs ...selling quality house plans for over 30 years.

Plan W7620MC: Interior Courtyard



House plans are Copyright © 2009 by our architects and designers.

- Styled like a French country home plan, this design incorporates arches and an impressive front entrance.
- Most first-floor rooms overlook a large interior courtyard with a wonderful fountain.
- From the secluded master suite, complete with garden tub, you can access the study via its optional door. The open living area comprises a family room, two-story dining room, breakfast area and kitchen with walk-in pantry.
- Each second-floor bedroom has its own bath.
- Ceilings: 10' first floor; 9' second floor.

Style: European, French Country

Total Living Area: 2921

Main Flr.: 2320

2nd Flr.: 601

Total Square Feet: 3,420 sq. ft.

Attached Garage: 2 Car, 499 sq. ft.

Bedrooms: 3

Full Bathrooms: 4

Width: 59'

Depth: 98'6"

Maximum Ridge Height: 31'10"

Exterior Walls: 2x4

Ceiling Height:

Main Floor: 10'

2nd Floor: 9'

Standard Foundations: Slab

Special Features: Court Yard

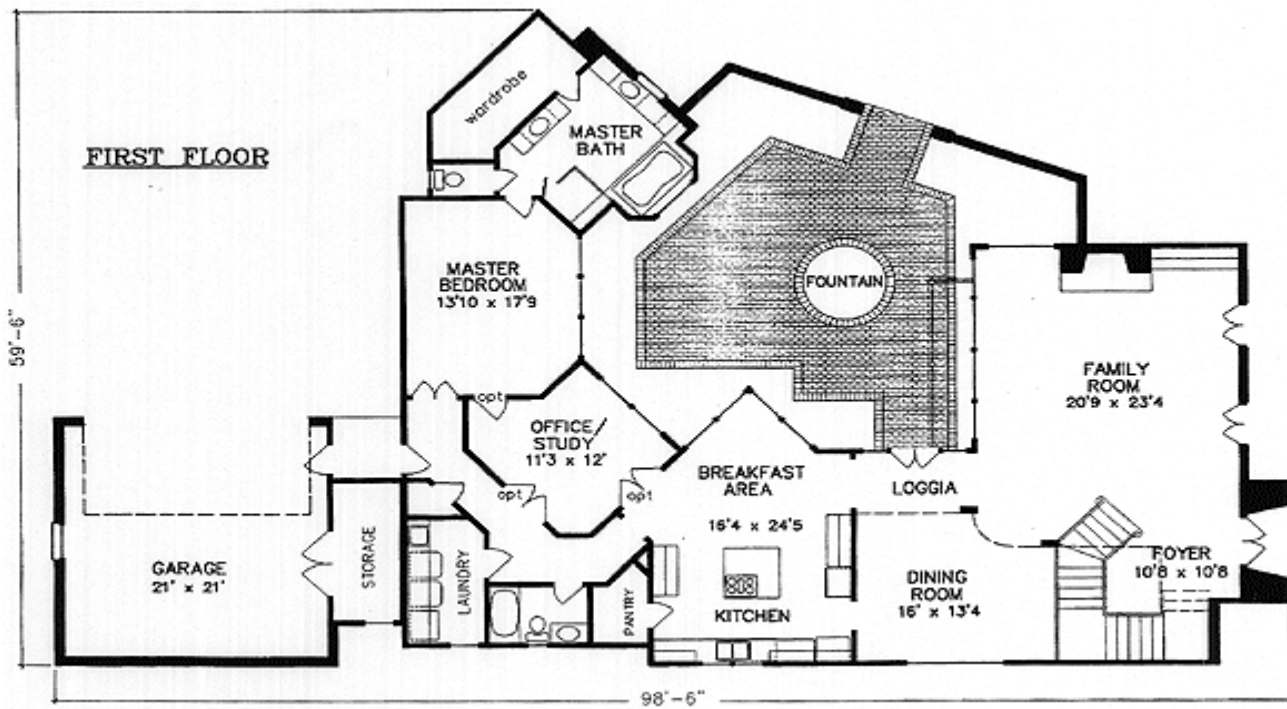
One Set  
\$732

Five Sets  
\$814

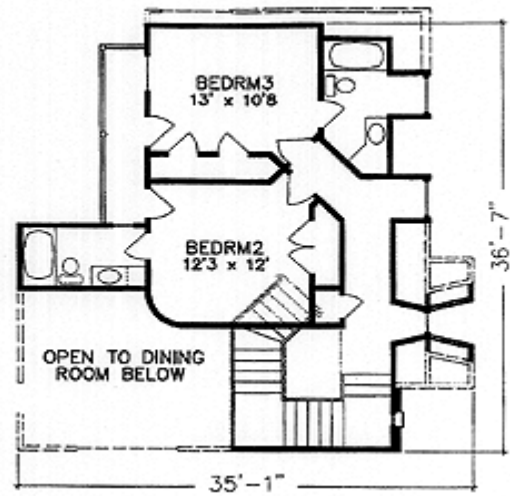
Eight Sets  
\$891

Reproducible  
\$1,100

## Main Level



2nd Level



Rear View

