

Architectural Designs ...selling quality house plans for over 30 years.

Plan W81033W: Elegant Entrance



House plans are Copyright © 2009 by our architects and designers.

- The facade of this three-story, pitch-roofed house plan offers a symmetrical placement of windows and a restrained but elegant central entrance.
- The central hall, or foyer, expands midway through the house to a family kitchen.
- Off the foyer are two rooms the living room with a fireplace and the study.
- Three bedrooms are housed on the second floor, including a deluxe master suite with a pampering bath.
- The windowed third-floor attic can be used as a study.

Style: Colonial, Traditional

Total Living Area: 2507

Main Flr.: 1023

2nd Flr.: 1008

3rd Flr.: 476

Total Square Feet: 2,791 sq. ft.

Attached Garage: 1 Car, 284 sq. ft.

Bedrooms: 3

Full Bathrooms: 2

Half Bathrooms: 1

Width: 49'8"

Depth: 32'

Maximum Ridge Height: 34'

Exterior Walls: 2x4

Ceiling Height:

Main Floor: 8'

2nd Floor: 8'

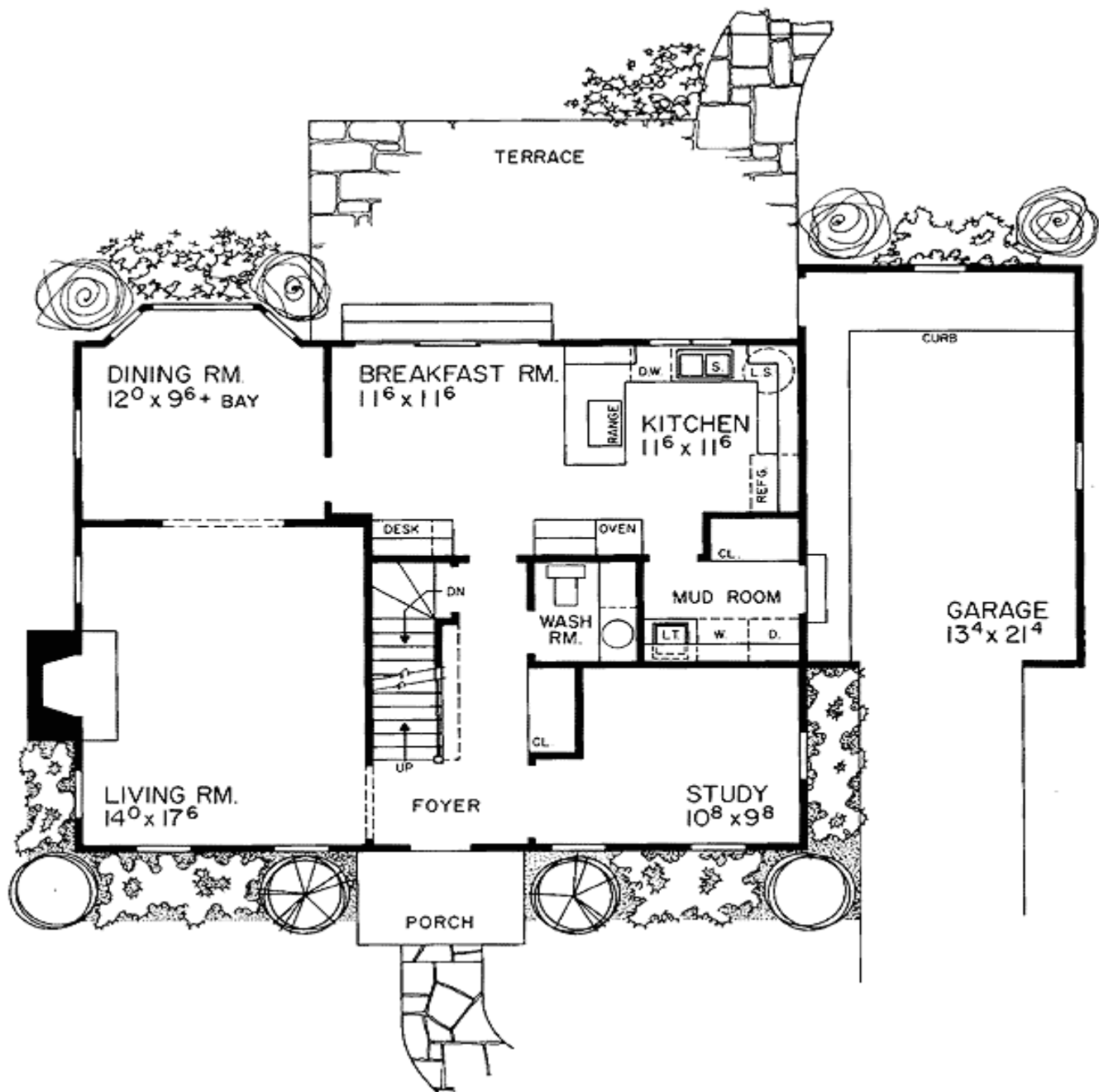
Other: 7'10" basement

Standard Foundations: Basement

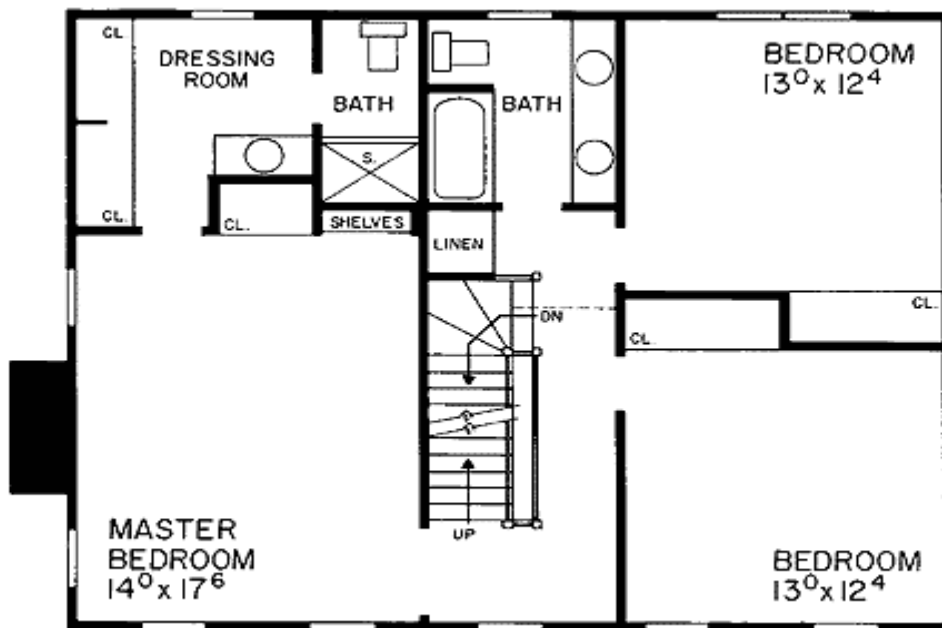
Special Features: Narrow Lot, PDF, Den-Office-Library-Study

One Set	Five Sets	Eight Sets	Reproducible	PDF File
\$665	\$740	\$810	\$1,000	\$1,000

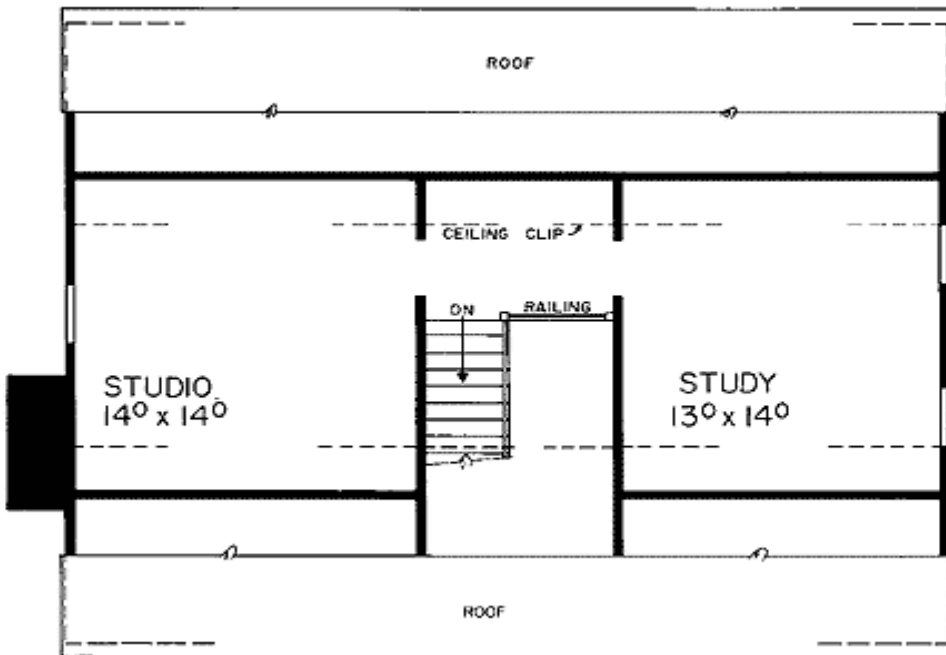
Main Level



2nd Level



Third Floor



Rear View

