

# Architectural Designs ...selling quality house plans for over 30 years.

Plan W9537RW: Majestic Luxury



House plans are Copyright © 2009 by our architects and designers.

- Four decks on the rear of this spectacular luxury home plan encourage plenty of outdoor activities.
- Designed for entertaining on a grand scale, a large wet bar lies close to the formal dining room with tray ceiling.
- Step down into the two-story great room with a magnificent fireplace as the focal point.
- Enjoy your informal meals in the hearth room with fireplace and access to the rear deck.
- The gourmet kitchen is enormous with a huge island that gives you plenty of room to spread out while you cook.
- On the second floor, an open rail overlooks the great room below.
- Boasting its own deck and a bayed sitting area, the master suite will make a welcome retreat at the end of the day. Laundry and four bedrooms complete the home.
- Expand below and create your own luxurious space.
- Related Plan: For an expanded version, see house plan 9520RW.

Style: Craftsman, European, Luxury, Mountain, Premium Collection

Total Living Area: 3979

Main Flr.: 1963

2nd Flr.: 2016

Basement Unfinished: 1,963 sq. ft.

Porch, Combined: 978 sq. ft.

Total Square Feet: 8,615 sq. ft.

Attached Garage: 3 Car, 1,695 sq. ft.

Bedrooms: 5

Full Bathrooms: 2

Half Bathrooms: 2

Width: 85'9"

Depth: 99'

Maximum Ridge Height: 34'6"

Exterior Walls: 2x4

Ceiling Height:

Main Floor: 10'

2nd Floor: 9'

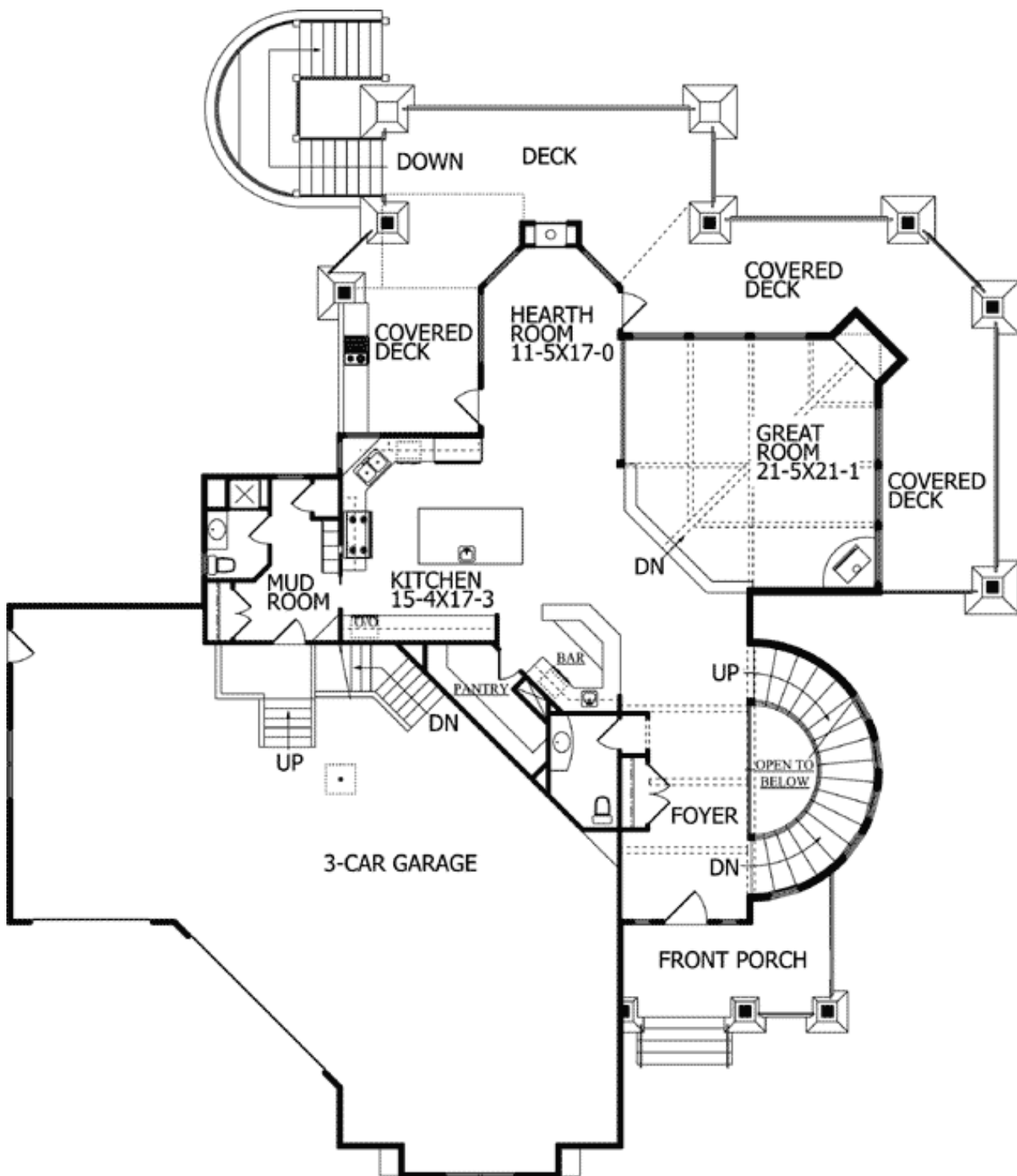
Other: 10' Tray Dining Room; Vaulted Great Room, MBR & BR#2; Tray BR#3"

Standard Foundations: Daylight, Walkout, Basement

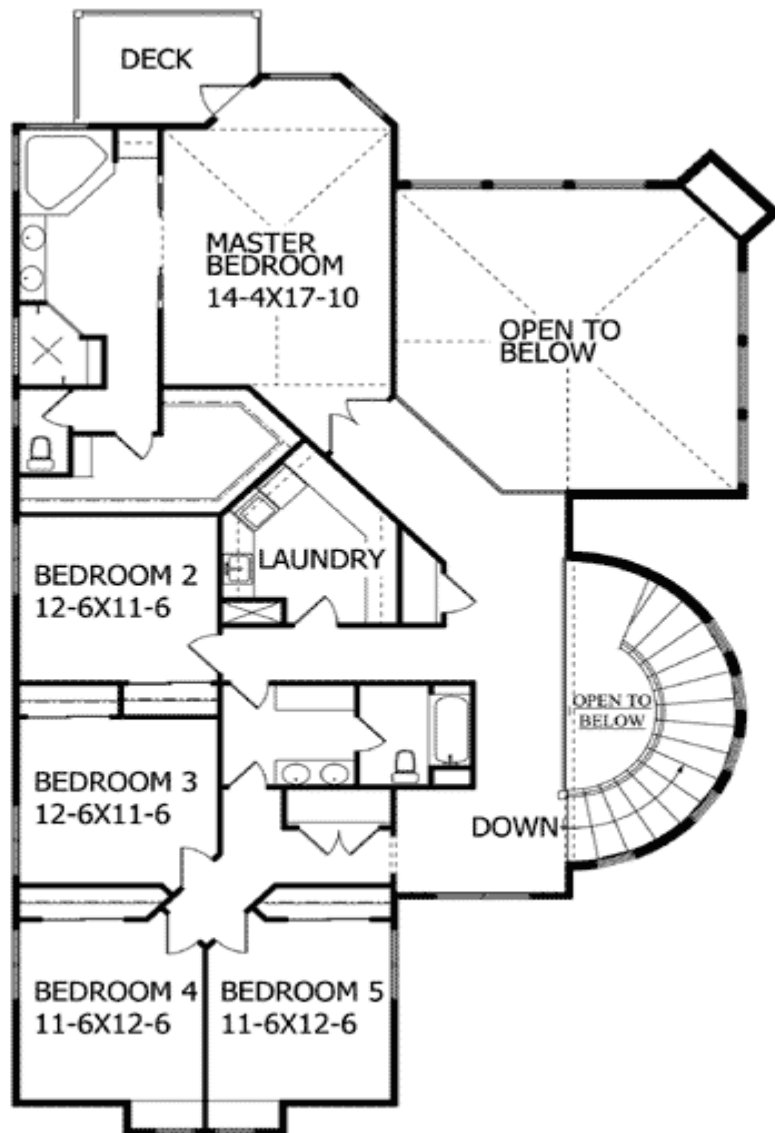
Special Features: Den-Office-Library-Study, CAD Available, Loft, Photo Gallery, PDF, Sloping Lot, Media-Game-Home Theater, Butler Walk-in Pantry, Corner Lot

One Set	Five Sets	Eight Sets	Reproducible	PDF File	CAD
\$745	\$845	\$895	\$1,295	\$1,295	\$1,995

## Main Level



2nd Level



Elevation #2



FRONT ELEVATION

Rear View



**BACK ELEVATION**

Entry/Foyer



Foyer



Great Room



Dining Room



Dining Vw2



Kitchen



Kitchen Vw2



Nook

