

## Plan W3837JA: Affordable Country Home Plan



House plans are Copyright © 2009 by our architects and designers.

- The formal balance of the exterior of this affordable country-style design is most appealing. If desired, a two-car attached garage of 427 square feet can also be constructed, increasing the width to 68'4".
- Multipaned doors and windows form one wall of the deep, columned front porch. Inside, the pavilion-style great room, rising for 10 feet, includes a fireplace bordered by built-ins. Through a wall of windows, you can view the covered porch and a sunny deck in back.
- A nine-foot ceiling unites the dining room with its bay window and the U-shaped kitchen. The nearby laundry room includes a handy walk-in pantry.
- Isolated on one side of the house for privacy, the master suite provides a wonderful retreat for its occupants. The bedroom features a tray ceiling, a bay window and a walk-in closet, while the bath includes a corner garden tub.
- On the other side of the house, two family bedrooms share the second full bath. Bonus space upstairs completes the design.
- Foundation options: basement, slab or crawl space.

Style: Cottage, Country

Total Living Area: 1380

Main Flr.: 1380

Basement Unfinished: 1,380 sq. ft.

Bonus: 372 sq. ft.

Deck: 427 sq. ft.

Total Square Feet: 3,931 sq. ft.

Attached Garage: 2 Car, 372 sq. ft.

Bedrooms: 3

Full Bathrooms: 2

Width: 48'

Depth: 43'4"

Maximum Ridge Height: 24'4"

Exterior Walls: 2x4

Ceiling Height:

    Main Floor: 9'

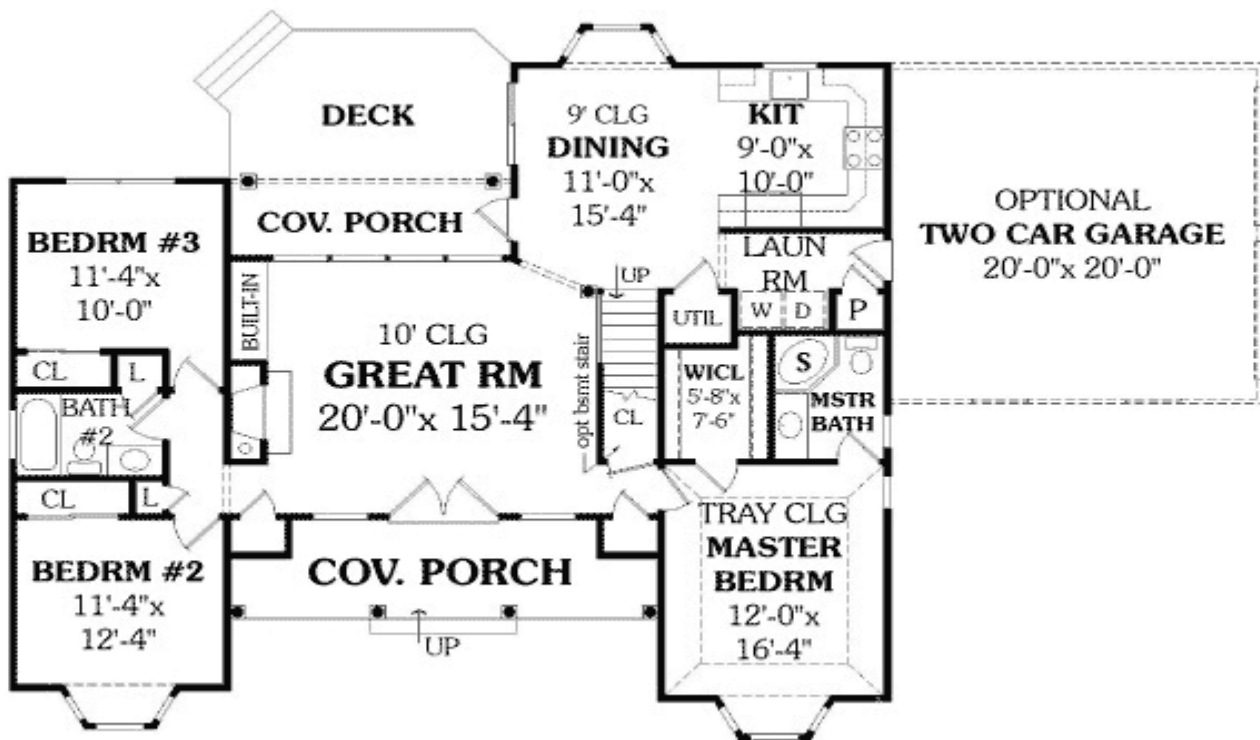
    Other: 10' Great Room; Tray MBR

Standard Foundations: Slab, Walkout, Basement, Crawl

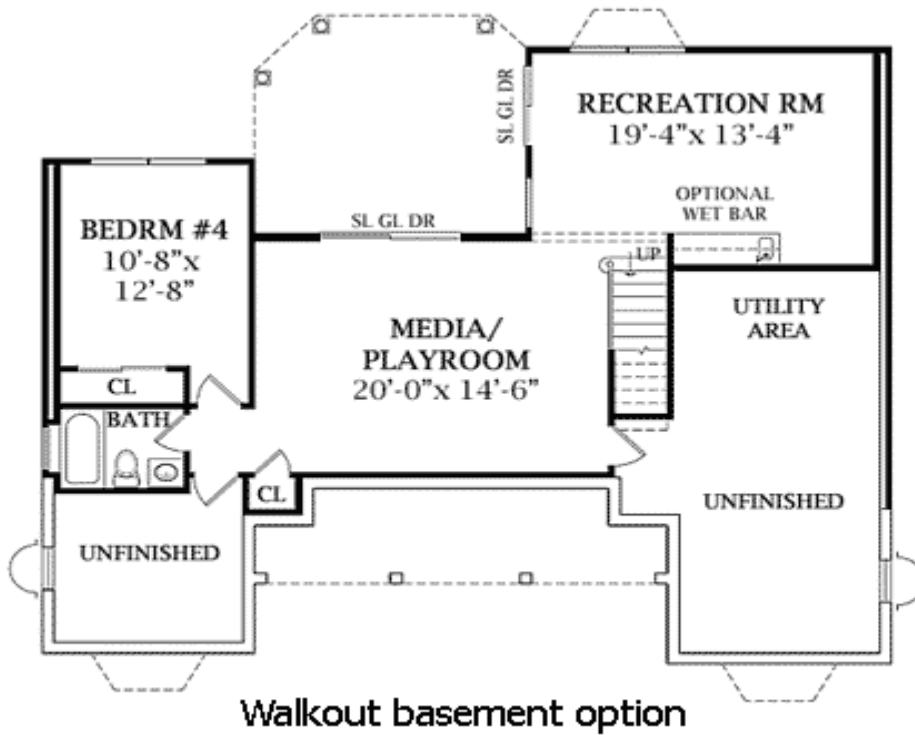
Special Features: Bonus Room, CAD Available, PDF, Photo Gallery, Narrow Lot, 1st Floor Master Suite

Five Sets	Eight Sets	Reproducible	PDF File	CAD
\$495	\$530	\$645	\$645	\$1,145

## Main Level

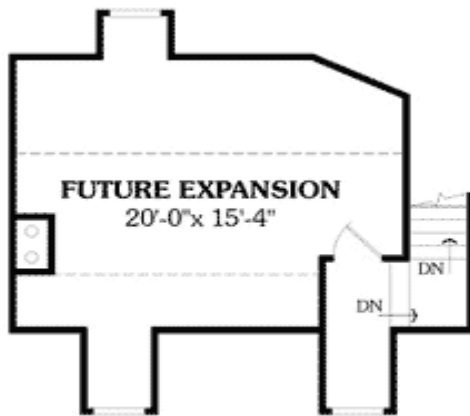


Optional



Walkout basement option

Bonus



# Architectural Designs ...selling quality house plans for over 30 years.

Photo



Photo #2



Elevation #2



Rear View



## Interior



Entry/Foyer



Dining Room

