

Plan W7098H: Updated Farmhouse Plan



House plans are Copyright © 2009 by our architects and designers.

- Traditional in style, this open, airy two-story, four-bedroom home plan is richly appointed with a classic front porch and elegant Palladian windows on its upper level.
- A double-door entry leads to a spacious reception hall. Expansive formal areas open to one another and feature a brick fireplace. The kitchen/dinette/family room is a 28' x 13'4" open space with 8'9" x 13'4" assigned to the open kitchen-cooking area.
- To the rear, the all-glass pentahedral dining room is set in an angle with the living room. Informal quarters, with a second fireplace, provide a perfect spot for casual family living.
- The centrally located kitchen serves the formal dining room and cheerful dinette. Sliding glass doors access the rear terrace from the family room.
- Upstairs, a skylighted hallway links the four bedrooms and two full baths. The master suite features a windowed dressing room and a private bath with a whirlpool hot tub.
- Foundation: basement.

Style: Country, Farmhouse, Traditional

Total Living Area: 1866

Main Flr.: 1015

2nd Flr.: 853

Basement Unfinished: 1,196 sq. ft.

Total Square Feet: 3,568 sq. ft.

Attached Garage: 2 Car, 504 sq. ft.

Bedrooms: 4

Full Bathrooms: 2

Half Bathrooms: 1

Width: 60'10"

Depth: 37'

Maximum Ridge Height: 22'

Exterior Walls: 2x4 or 2x6

Ceiling Height:

Standard Foundations: Basement

Special Features: 1st Floor Master Suite

One Set

\$450

Five Sets

\$505

Eight Sets

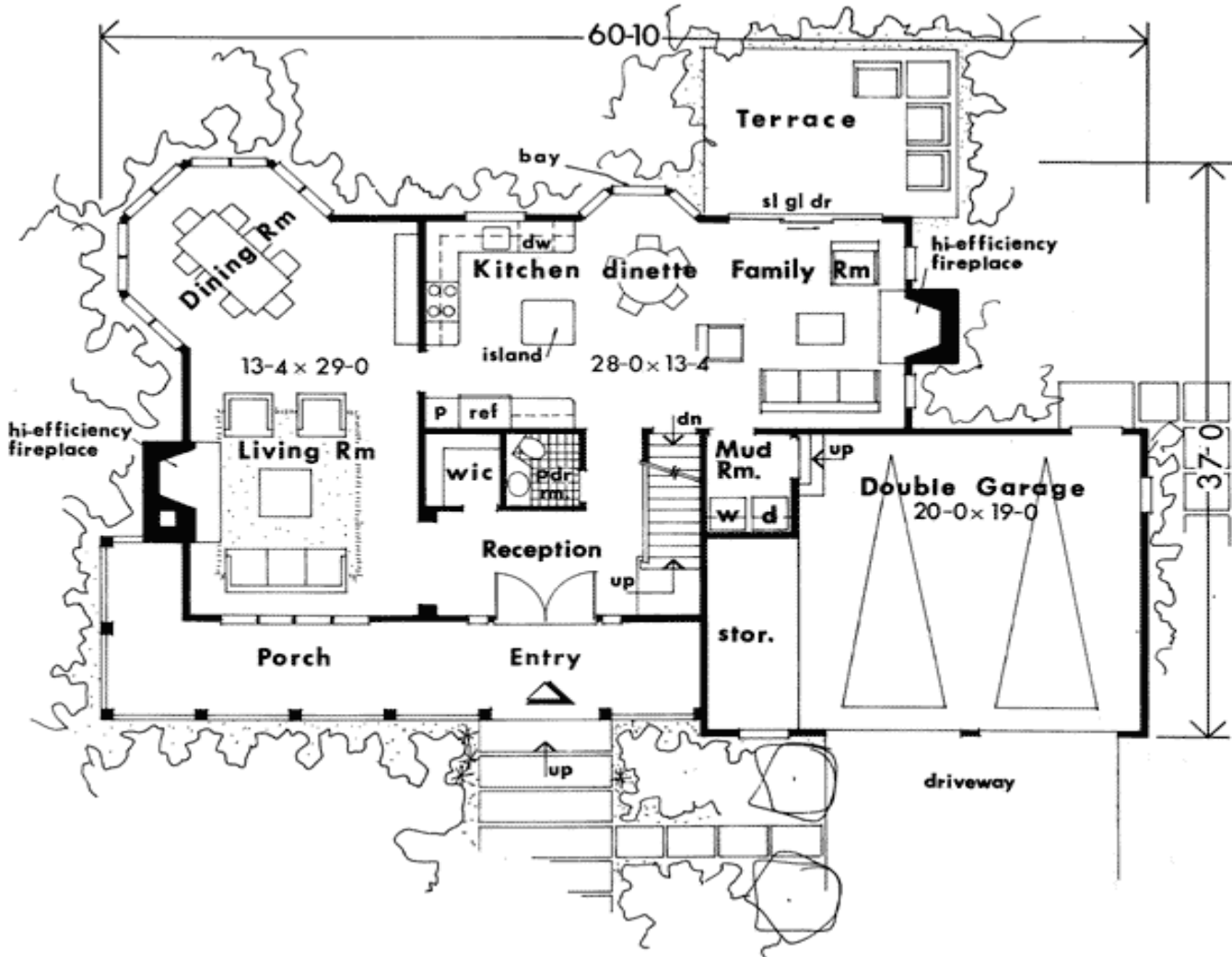
\$550

Reproducible

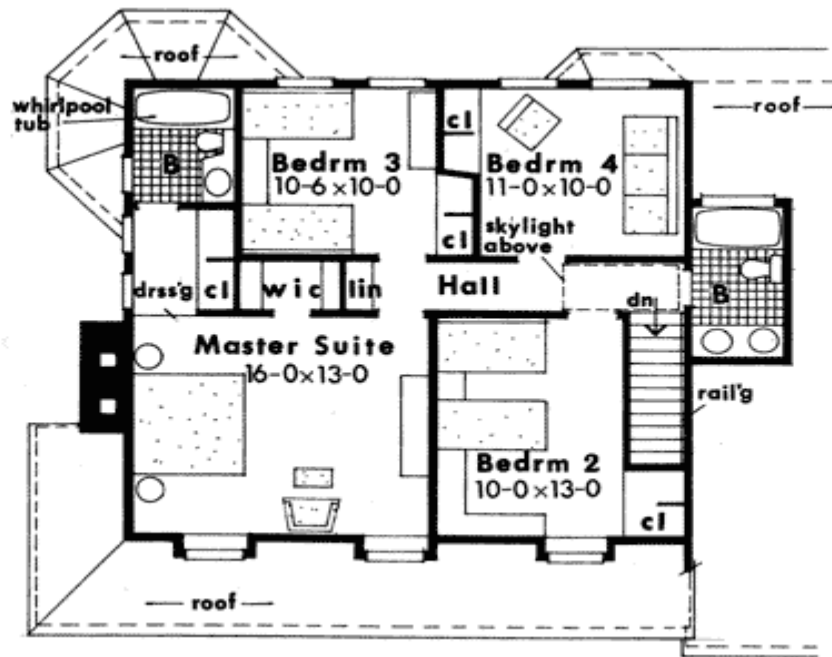
\$670

Architectural Designs ...selling quality house plans for over 30 years.

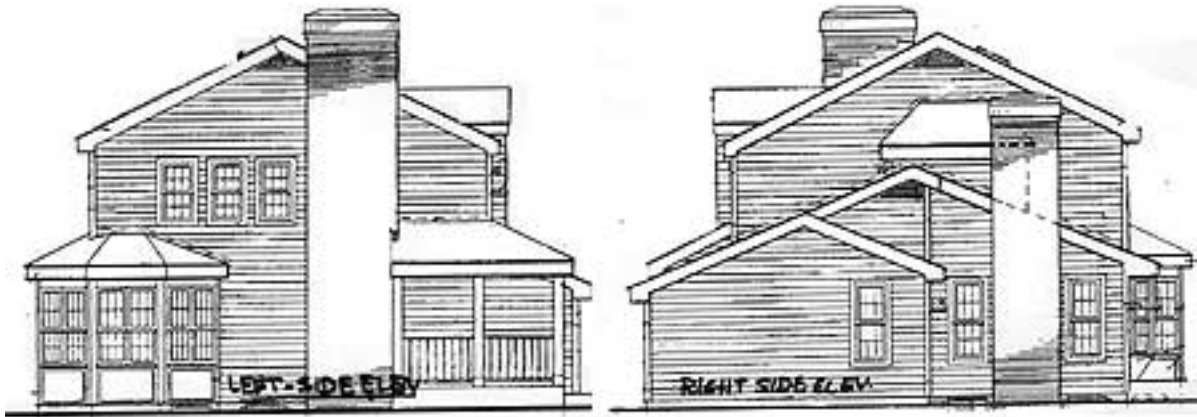
Main Level



2nd Level



Sides/Rear



Architectural Designs ...selling quality house plans for over 30 years.

Interior

