

## Plan W6869AM: Options for Growth



House plans are Copyright © 2009 by our architects and designers.

- The 2-story-high vaulted living room of this traditional abode can be partly floored in to create a loft, overlooking the living room. Additional space can be gained by finishing the second-floor bonus room as a fourth bedroom. Another option allows you to expand the garage to three bays, increasing the width of the house to 50 feet.
- On the first floor, double doors open to a corner den off the foyer. Columns mark off the two-story formal dining room. The informal area in back contains a family room complete with corner fireplace, built-in shelves and backyard access.
- An angled eating island with double sinks and dishwasher is featured in the kitchen, while an eating nook juts out in back.
- Upstairs, double doors open to the master suite. Here you find a luxurious bath with a walk-in closet, toilet chamber, his and her sinks, garden tub and separate shower. Another compartmented bath services the family bedrooms.
- Foundation: crawl space.

Style: Northwest, Ranch, Traditional

Total Living Area: 1467

Main Flr.: 1467

Attached Garage: 2 Car, 380 sq. ft.

Bedrooms: 3

Full Bathrooms: 2

Width: 49'

Depth: 43'

Maximum Ridge Height: 21'

Exterior Walls: 2x6

Ceiling Height:

Other: 9'-13' Vaulted Living & Dining; 8'-11'6" Vaulted MBR

Standard Foundations: Crawl

Alternate Foundations: Slab (\$80), Basement (\$195)

Special Features: CAD Available, PDF, 1st Floor Master Suite, Narrow Lot

One Set  
\$475

Five Sets  
\$550

Eight Sets  
\$595

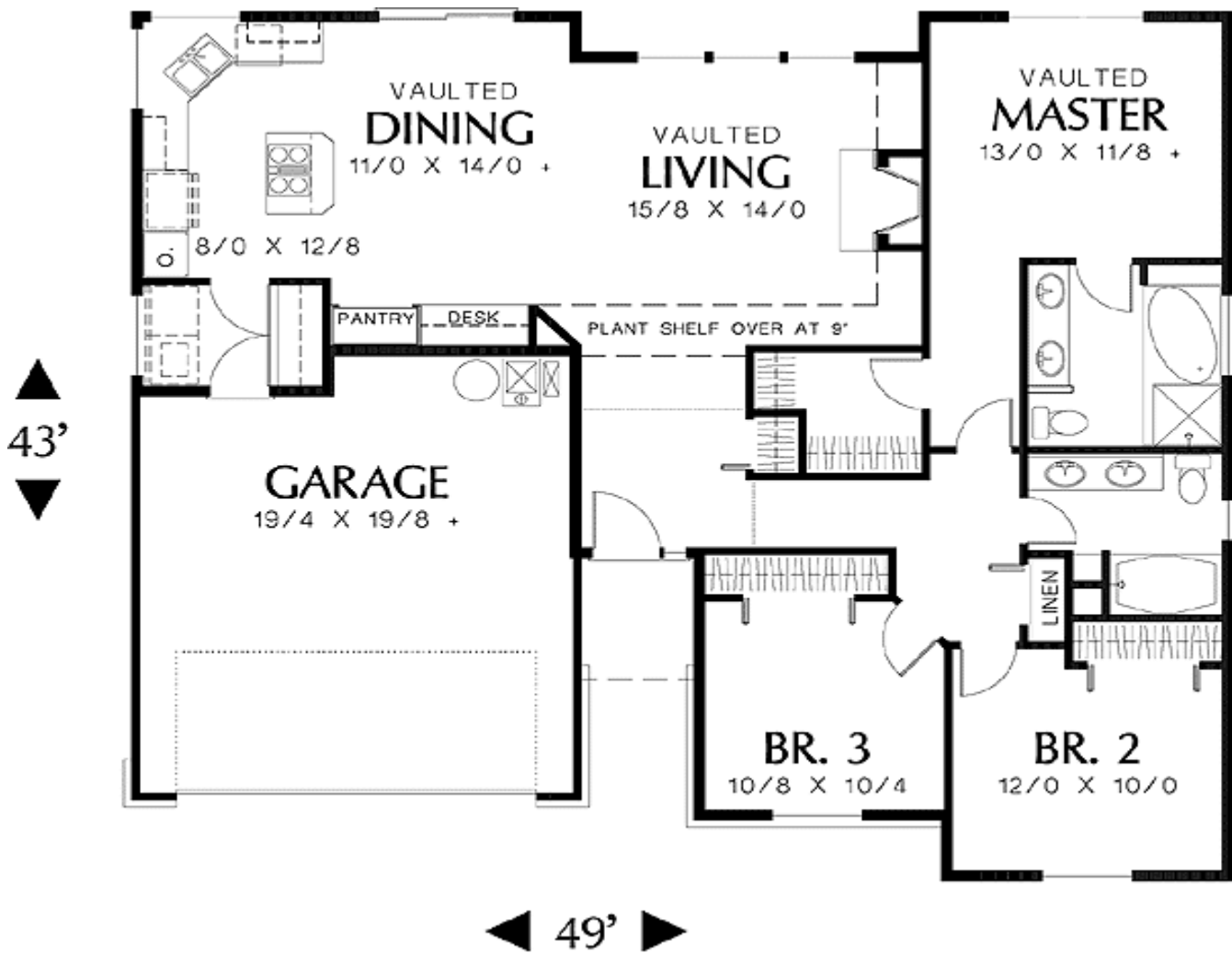
Reproducible  
\$800

PDF File  
\$800

CAD  
\$1,350

# Architectural Designs ...selling quality house plans for over 30 years.

Main Level



Elevation #2



Rear View

