

# Architectural Designs ...selling quality house plans for over 30 years.

Plan W63200HD: Spacious Living Room with Options



House plans are Copyright © 2009 by our architects and designers.

- A grand covered entry welcomes you to this attractive house plan.
- High-volume ceilings distinguish the formal living and dining rooms. A high ceiling is also found in the den/study.
- The family wing offers a large living room with access to the covered patio. The kitchen opens to the curved glass-walled breakfast room and the grand vaulted family room with fireplace and media wall. Note the summer kitchen on the patio.
- The master suite features his-and-hers walk-in closets, his-and-her vanities, a sumptuous soaking tub, shower and commode closet. Two family bedrooms each access a compartmented bath.
- Related Plan: Need more space? See house plan 6316HD (3,556 sq. ft.)

Style: Florida, Traditional

Total Living Area: 2931

Main Flr.: 2931

Total Square Feet: 3,699 sq. ft.

Attached Garage: 3 Car, 768 sq. ft.

Bedrooms: 3

Full Bathrooms: 3

Width: 70'8"

Depth: 83'

Maximum Ridge Height: 27'4"

Exterior Walls: Block

Ceiling Height:

Main Floor: 10'

Other: 15' Living Room; 12' Dining & Den

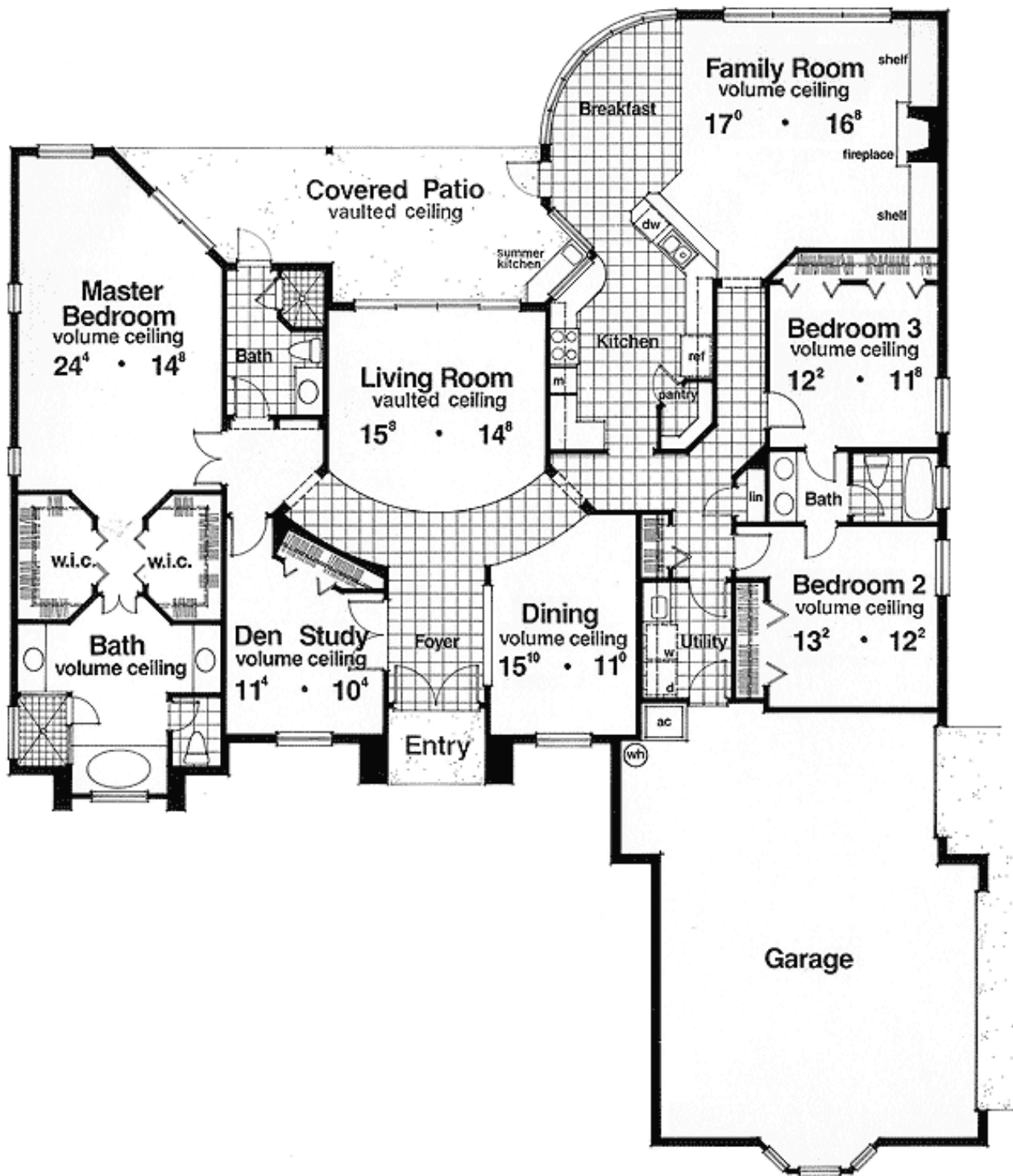
Standard Foundations: Slab

Alternate Foundations: Basement (\$675), Crawl (\$675)

Special Features: Split Bedrooms, 1st Floor Master Suite, PDF, Butler Walk-in Pantry, Jack & Jill Bath, Photo Gallery

One Set	Five Sets	Eight Sets	Reproducible	PDF File	CAD
\$650	\$700	\$740	\$850	\$850	\$1,700

## Main Level



Elevation #2

