

# Architectural Designs ...selling quality house plans for over 30 years.

Plan W59001ND: Log Retreat



House plans are Copyright © 2009 by our architects and designers.

- Both mountainous and flat settings would be well suited for this gorgeous log home plan.
- The central great room separating a master suite from the family area containing the kitchen and dining rooms gives each area its own privacy.
- The dining room has French door access to the deck. The opposite side has the master suite complete with private bathroom and deck access as well.
- A beautiful staircase leads to the upper level bedrooms each equipped with plenty of closet space and a loft area with bathroom and nearby linen closet.
- Ceilings: 8' standard.
- Foundation: Basement, Crawl Space, Daylight Basement. Please specify your preference when ordering.

Style: Log, Mountain, Vacation

Total Living Area: 2402

Main Flr.: 1584

2nd Flr.: 818

Total Square Feet: 2,402 sq. ft.

Bedrooms: 3

Full Bathrooms: 2

Half Bathrooms: 1

Width: 58'

Depth: 40'

Maximum Ridge Height: 24'

Exterior Walls: Log

Ceiling Height:

Main Floor: 8'

Other: 2-Story Vaulted Great Room

Standard Foundations: Crawl

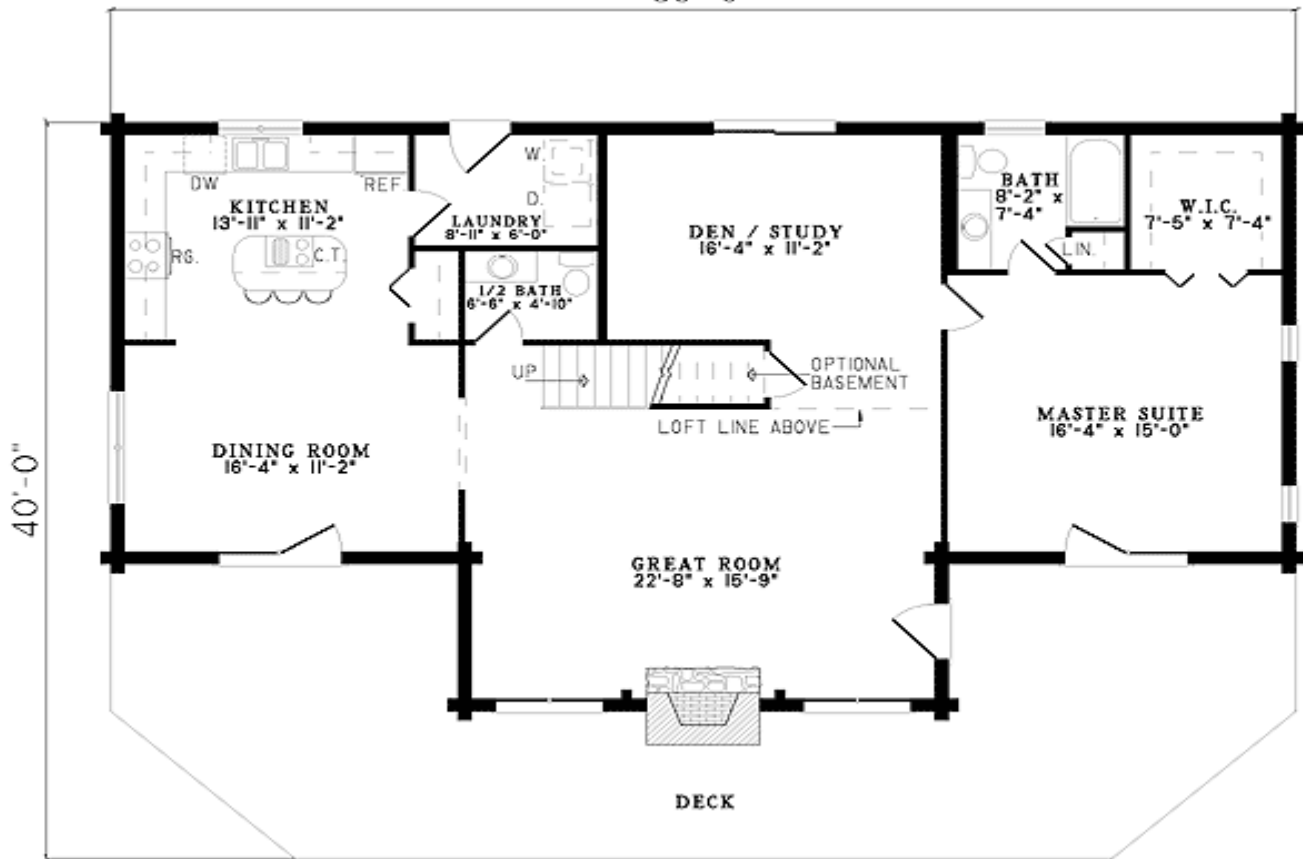
Alternate Foundations: Walkout (\$250), Basement (\$250)

Special Features: PDF, 1st Floor Master Suite, Photo Gallery, Sloping Lot

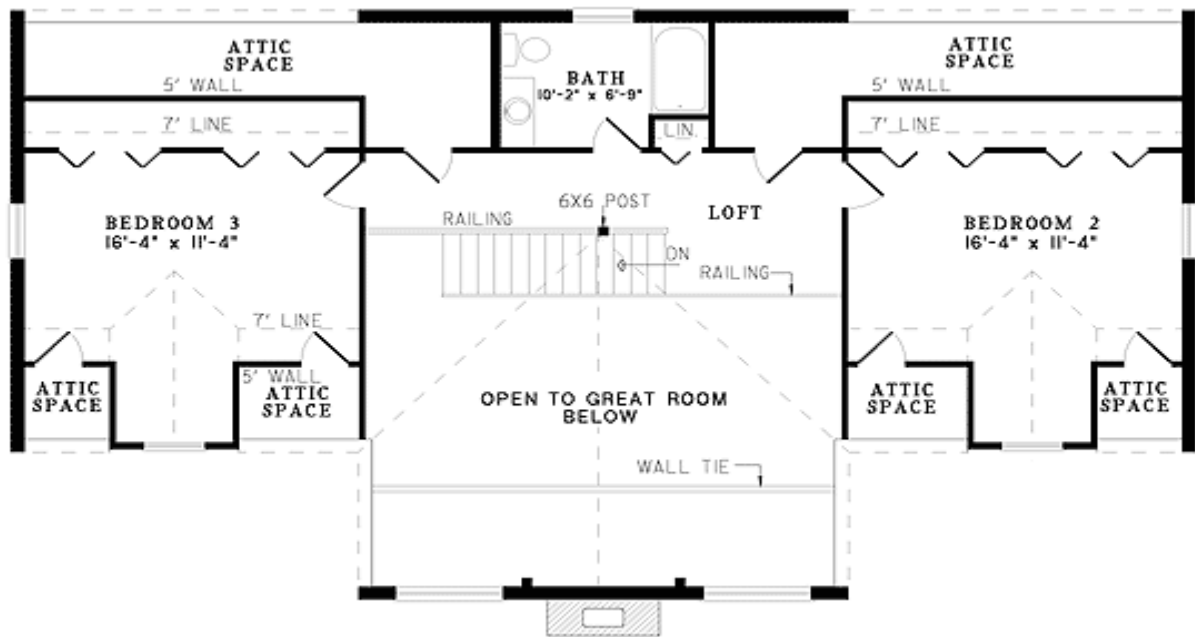
One Set	Five Sets	Eight Sets	Reproducible	PDF File	CAD
\$575	\$660	\$695	\$880	\$880	\$1,500

## Main Level

58'-0"



## 2nd Level



Elevation #2

