

# Architectural Designs ...selling quality house plans for over 30 years.

Plan W5743HA: Cozy Carriage House Plan



House plans are Copyright © 2009 by our architects and designers.

- Porch leads to vaulted entry and stair with feature window, coat closet and access to garage/laundry.
- Cozy living room offers vaulted ceiling, fireplace, large palladian window and pass-through to kitchen.
- A garden tub with arched window is part of a very roomy bath.

Style: Cottage

Total Living Area: 624

Main Flr.: 112

2nd Flr.: 512

Deck: 55 sq. ft.

Entry: 42 sq. ft.

Total Square Feet: 1,267 sq. ft.

Attached Garage: 2 Car, 546 sq. ft.

Bedrooms: 1

Full Bathrooms: 1

Width: 28'

Depth: 26'

Maximum Ridge Height: 26'6

Exterior Walls: 2x4

Ceiling Height:

Main Floor: 8'

2nd Floor: 8'

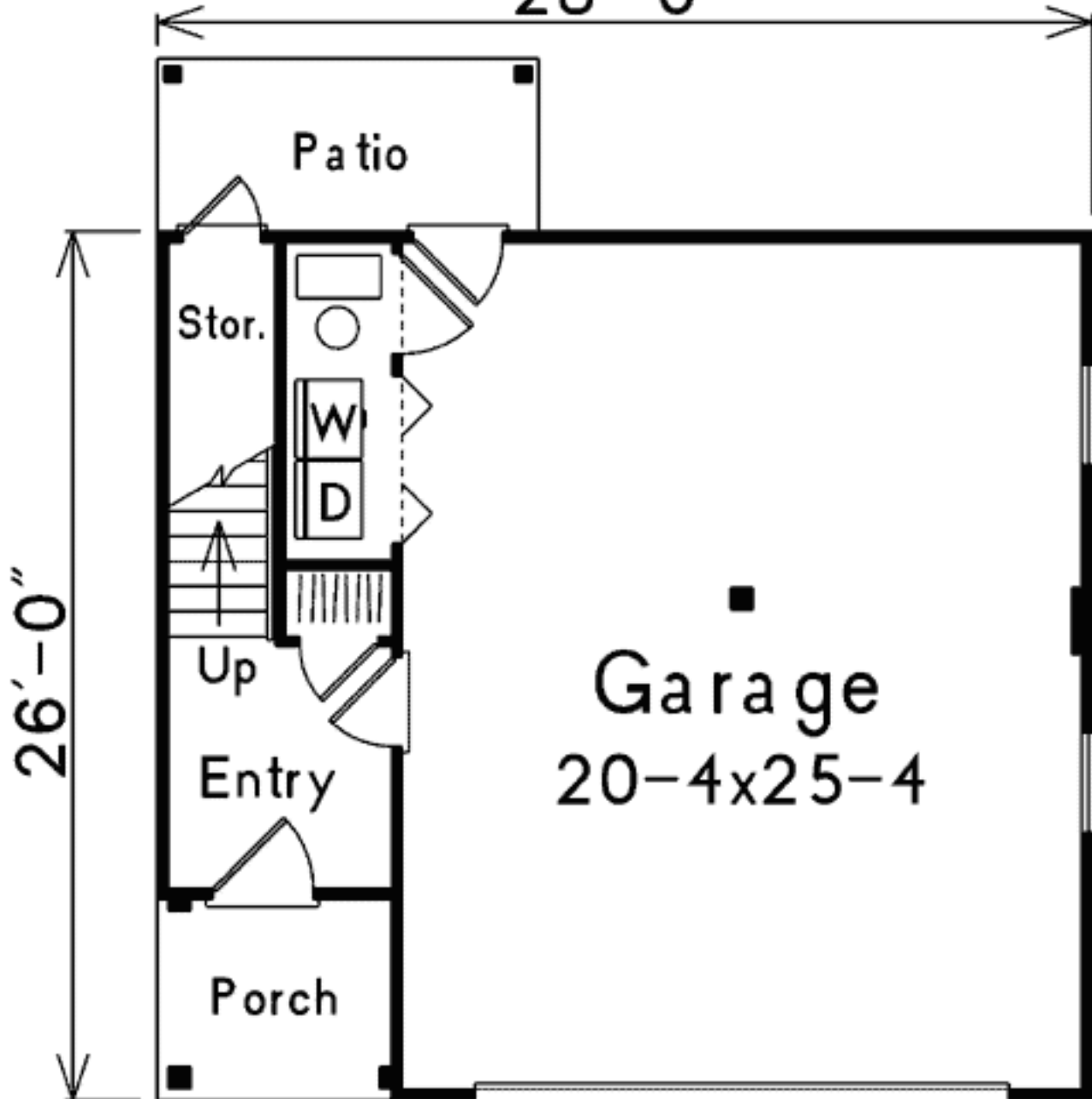
Standard Foundations: Slab

Special Features: Narrow Lot, 1st Floor Master Suite, PDF, CAD Available

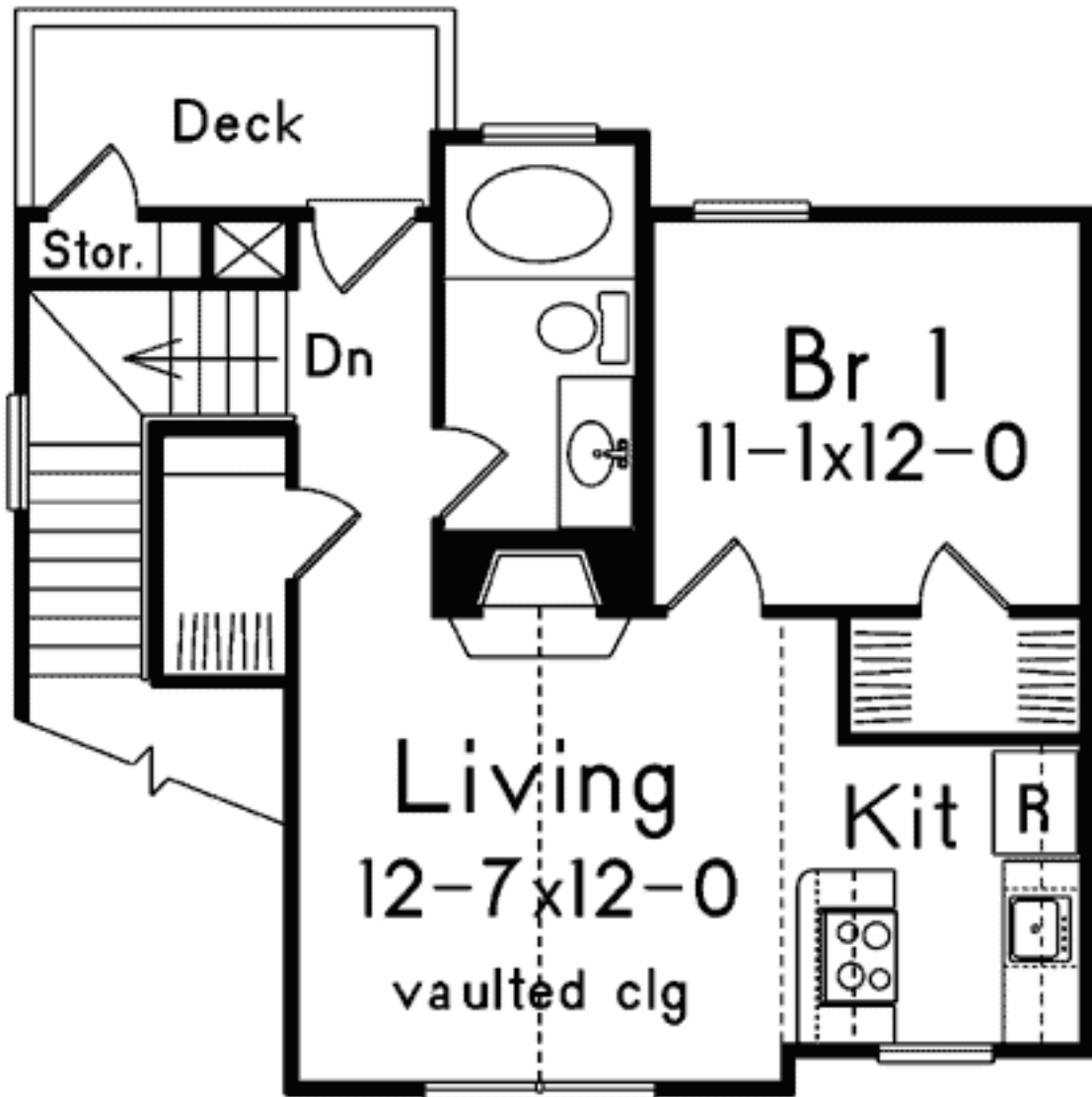
One Set	Five Sets	Eight Sets	Reproducible	PDF File	CAD
\$310	\$410	\$510	\$595	\$595	\$995

Main Level

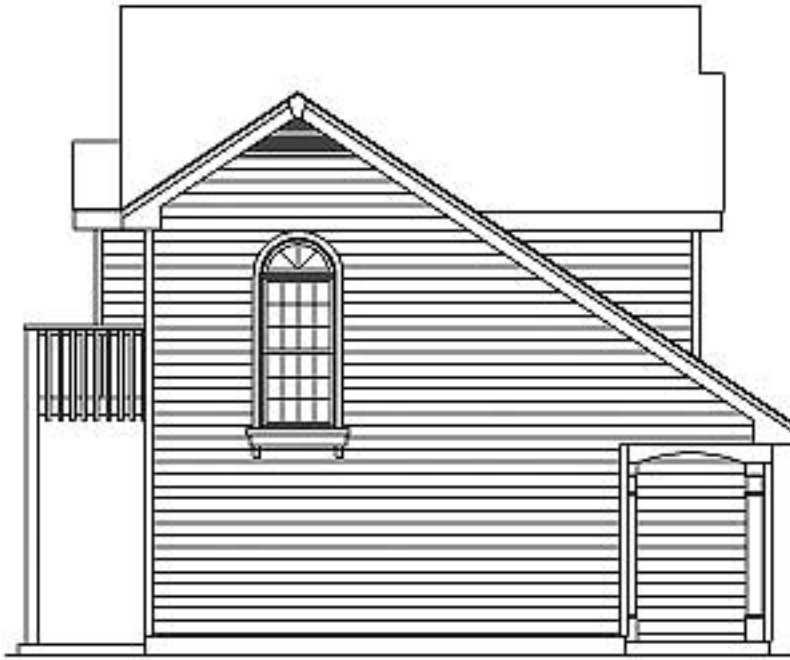
28'-0"



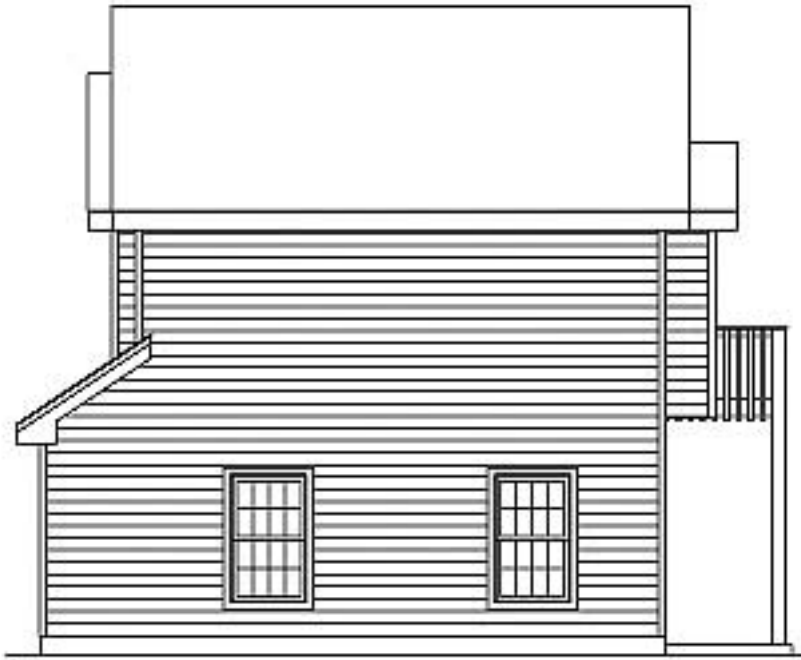
2nd Level



Left Side



Right Side



Rear View

