

Plan W3063D: Compact Ranch



House plans are Copyright © 2009 by our architects and designers.

- The recessed entry of this traditional home is distinguished by its gable roof, its jack arch and its front door surrounded by glass. Another gable with a jack-arched window complements the entry.
- Inside, the open design makes the most of the space, and an 11-foot ceiling in the foyer adds to the spacious ambience. The living room, breakfast room and kitchen flow together. In the living room, notice the attractive corner fireplace.
- The Pullman-style kitchen includes a nice-sized pantry closet and a snack bar.
- Both the master bedroom and bedroom two slope up to 10-foot flat ceilings. In the four-fixture master bath, a garden tub is placed under a window, and a walk-in closet provides good storage space. The other full bath serves the secondary bedrooms and the rest of the house.
- In the basement option plan, U-shaped stairs are accessed from the entry and extend into the garage replacing the laundry room. The length of the garage is slightly extended to accommodate the changes. The washer and dryer are placed on either side of the entry into the kitchen from the garage. The basement option brings the total living area to 1,209 square feet.
- In the garage, disappearing stairs access storage space.
- Foundation options: basement, slab or crawl space. Please specify when ordering.

Style: European, Traditional

Total Living Area: 1196

Main Flr.: 1196

Basement Unfinished: 1,196 sq. ft.

Porch, Combined: 26 sq. ft.

Deck: 80 sq. ft.

Total Square Feet: 2,862 sq. ft.

Attached Garage: 2 Car, 364 sq. ft.

Bedrooms: 3

Full Bathrooms: 2

Width: 49'6"

Depth: 41'5"

Maximum Ridge Height: 23'

Exterior Walls: 2x4

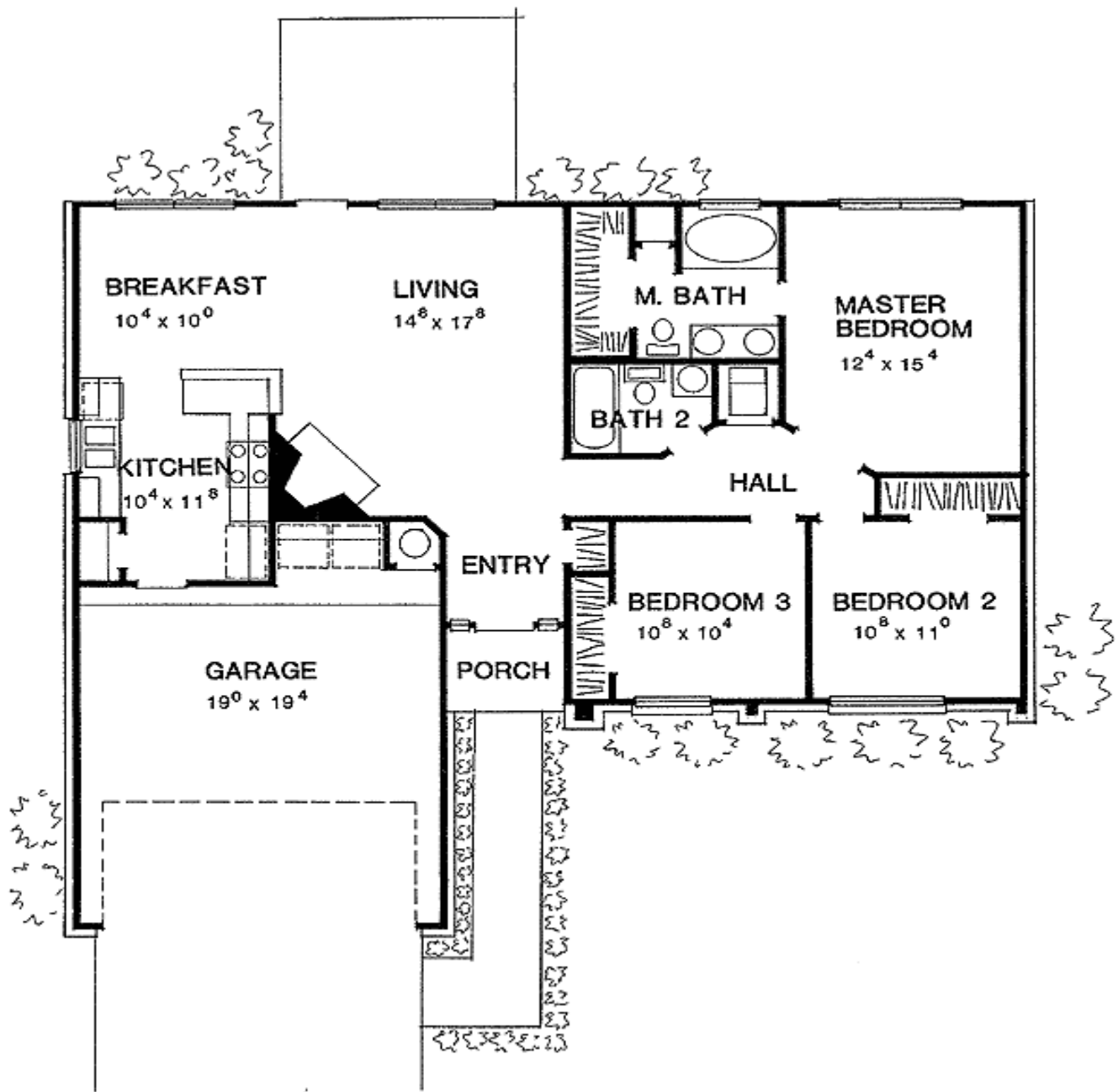
Ceiling Height:

Standard Foundations: Slab, Basement, Crawl

Special Features: Narrow Lot, 1st Floor Master Suite, CAD Available, Butler Walk-in Pantry, Corner Lot

One Set	Five Sets	Eight Sets	Reproducible	CAD
\$510	\$565	\$620	\$795	\$1,765

Main Level



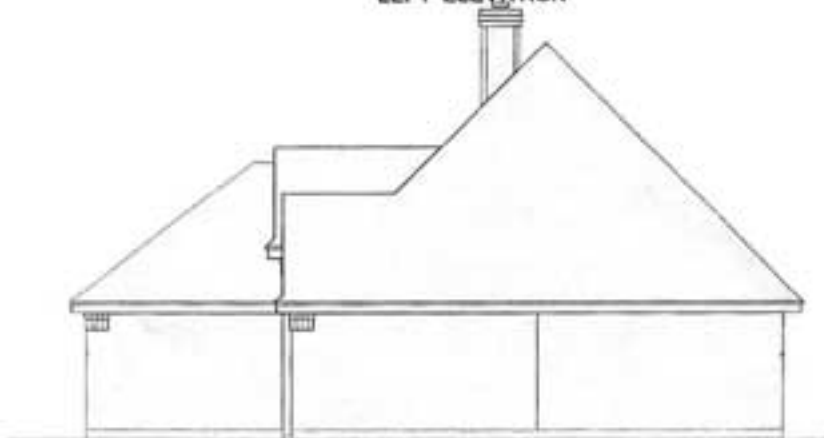
Sides/Rear



REAR ELEVATION



LEFT ELEVATION



RIGHT ELEVATION