

Architectural Designs ...selling quality house plans for over 30 years.

Plan W3806JA: Ranch Makes Good Use of Space



House plans are Copyright © 2009 by our architects and designers.

- The open floor plan of this country-style ranch maximizes its square footage. The optional garage can be placed on the side or rear.
- A full-width classically detailed porch graces the front, and a cameo-style front door leads into a spacious tray-ceilinged living room.
- The U-shaped kitchen wraps around its center island and includes an abundance of cabinets, one being a pantry cabinet. The dining space features a distinctive stepped ceiling and double doors.
- The master bedroom provides its own walk-in closet and private bath. Two other bedrooms share an additional bath.
- Foundation options: basement, crawl space, daylight or slab. Please specify when ordering.

Style: Country, Ranch

Total Living Area: 1097

Main Flr.: 1097

Total Square Feet: 1,558 sq. ft.

Detached Garage: 2 Car, 461 sq. ft.

Bedrooms: 3

Full Bathrooms: 2

Width: 59'4"

Depth: 35'8"

Maximum Ridge Height: 20'1"

Exterior Walls: 2x4

Ceiling Height:

Other: Tray Living Room; Step Dining Room

Standard Foundations: Slab, Basement, Crawl

Alternate Foundations: Walkout (\$175)

Special Features: Sloping Lot, PDF, Photo Gallery, 1st Floor Master Suite

Five Sets
\$495

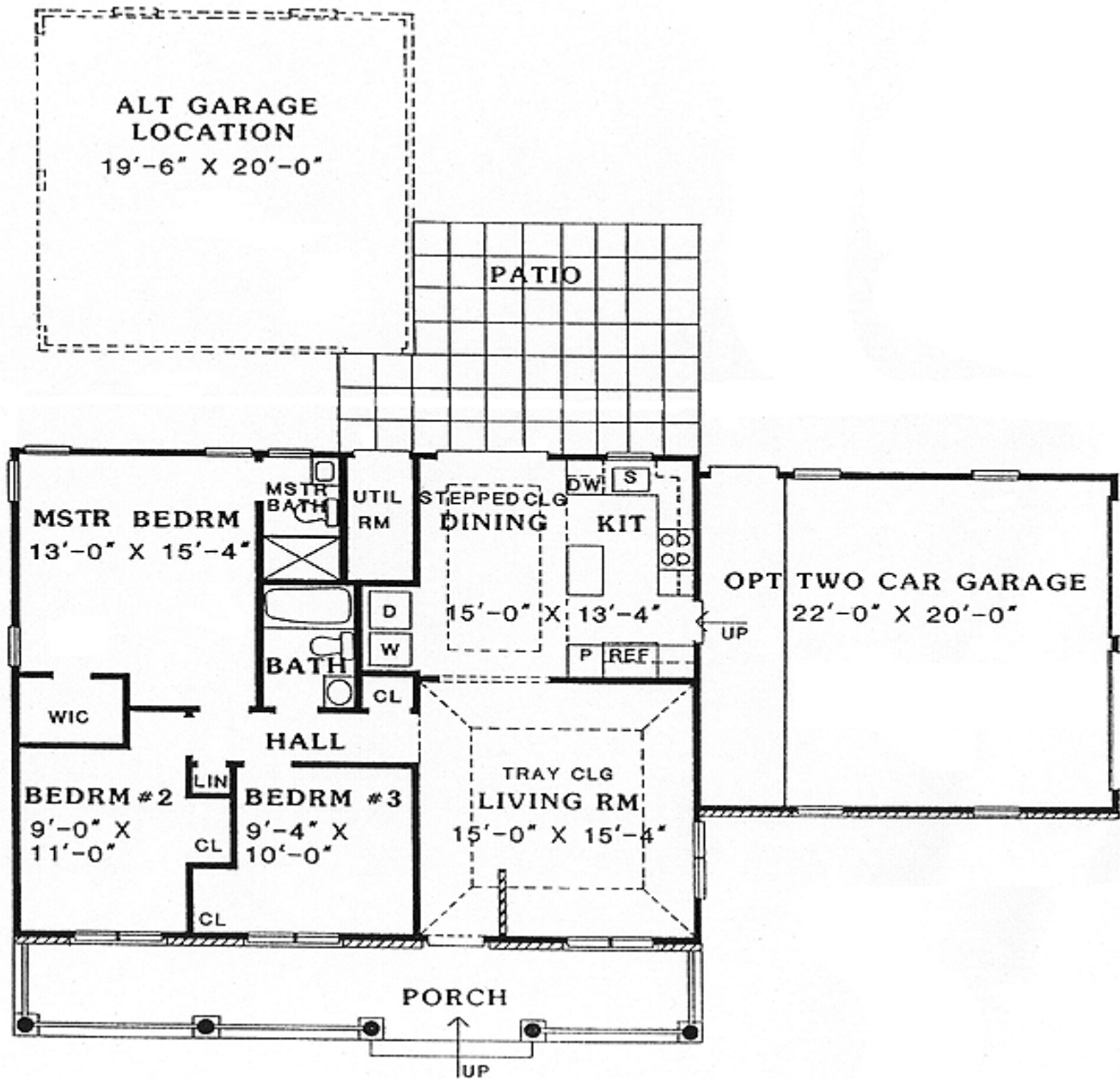
Eight Sets
\$530

Reproducible
\$645

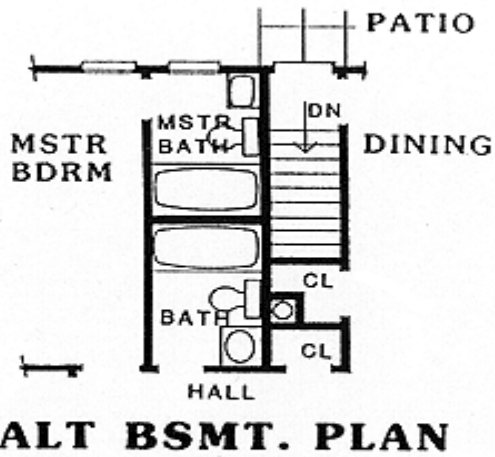
PDF File
\$645

CAD
\$1,145

Main Level



Optional



Architectural Designs ...selling quality house plans for over 30 years.

Photo



Rear View

