

Plan W59373ND: Quaint Country Cottage



House plans are Copyright © 2009 by our architects and designers.

- Let the covered front porch of this quaint country cottage welcome you inside after a long day. Step into the kitchen/dining area for a snack before kicking off your shoes to relax in the generous great room.
- When friends are over, the rear grilling porch can be used to create the perfect atmosphere for an outdoor party.
- This master suite will prove to be private and comfortable. Located on the main floor, it features a bay window and large walk-in closet.
- Upstairs, a second bedroom is available as well as a spacious loft that overlooks the great room below.
- Related Plan: For a log home version of this design, see 59044ND.

Style: Cottage, Country

Total Living Area: 975

Main Flr.: 616

2nd Flr.: 359

Porch, Combined: 464 sq. ft.

Total Square Feet: 1,439 sq. ft.

Bedrooms: 2

Full Bathrooms: 1

Width: 30'6"

Depth: 37'

Maximum Ridge Height: 21'8"

Exterior Walls: 2x4

Ceiling Height:

Main Floor: 9'

2nd Floor: 8'

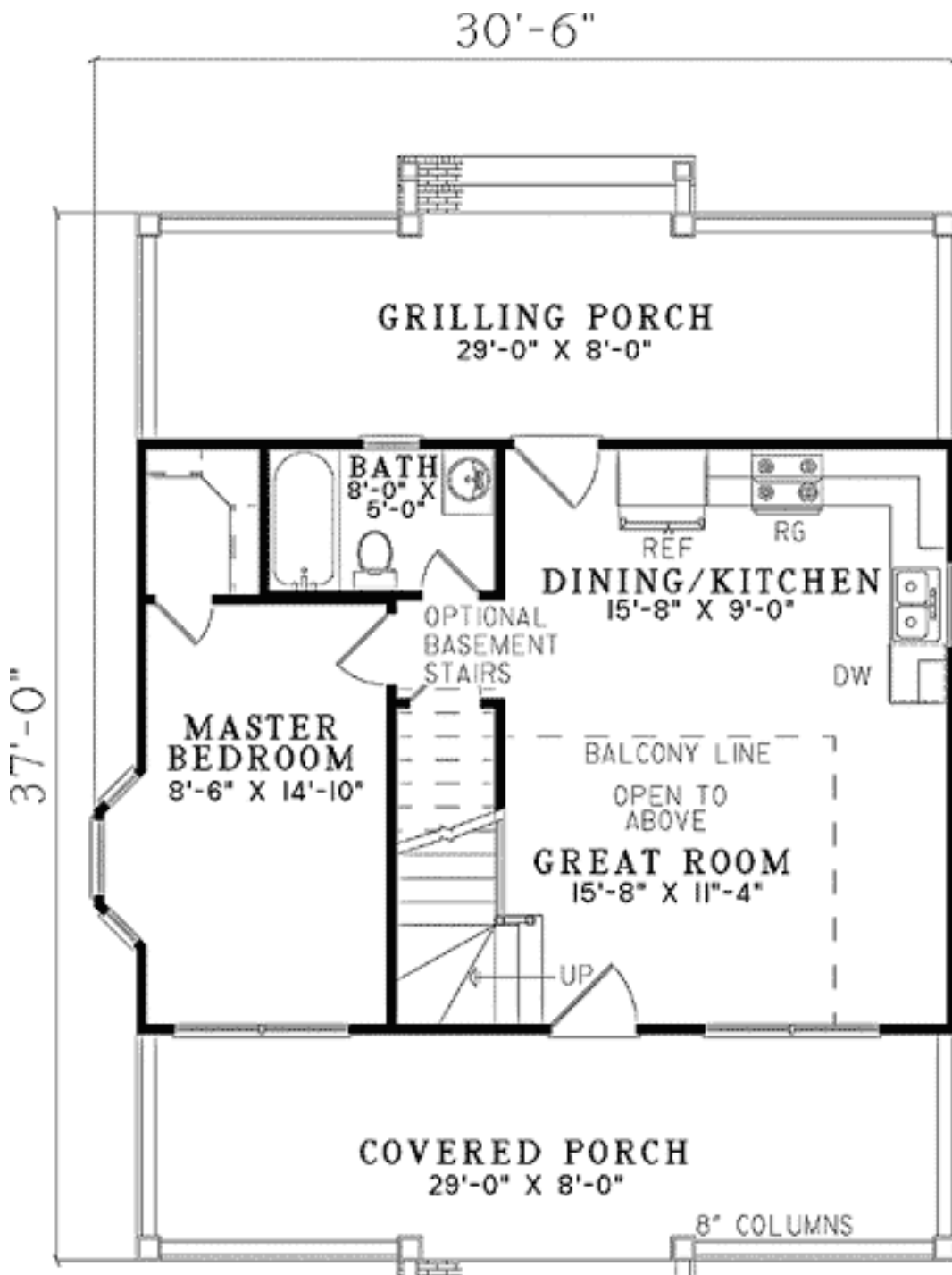
Standard Foundations: Slab, Crawl

Alternate Foundations: Walkout (\$250), Basement (\$250)

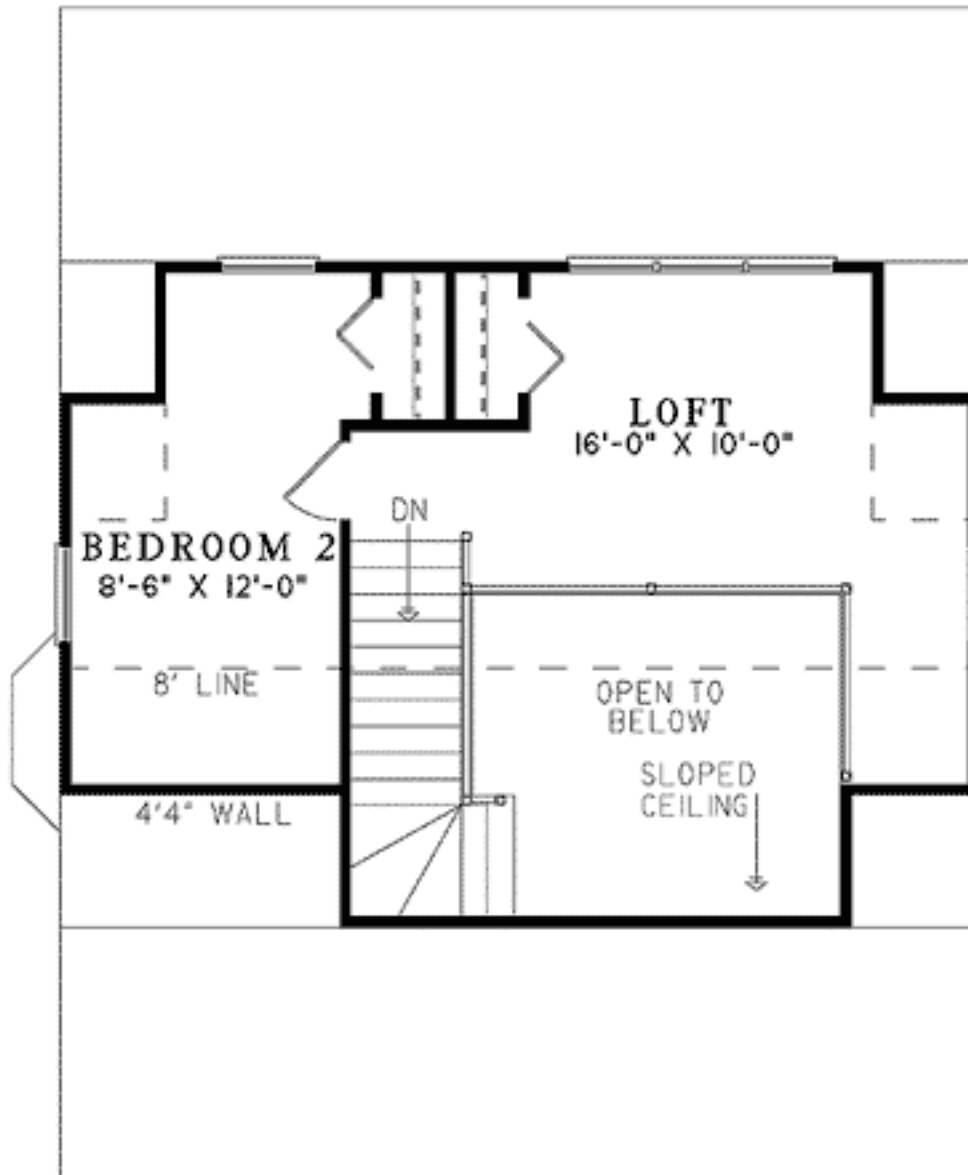
Special Features: Narrow Lot, CAD Available, PDF

One Set	Five Sets	Eight Sets	Reproducible	PDF File	CAD
\$515	\$560	\$585	\$700	\$700	\$1,200

Main Level



2nd Level



Sides/Rear



REAR ELEVATION



LEFT ELEVATION



RIGHT ELEVATION