

# Architectural Designs ...selling quality house plans for over 30 years.

Plan W6532RF: Country Farmhouse Plan With Lots of Extras



House plans are Copyright © 2009 by our architects and designers.

- This spacious country farmhouse plan works well for the larger family. A flexible room on the first floor could serve as another bedroom, an office or a place for home schooling.
- Built-ins are found throughout the house, and wide covered porches provide outdoor living space in both front and back.
- Three bedrooms and a vaulted rec room can be found on the second floor plus a bonus room and storage for extra expansion.
- A tray ceiling tops the private master bedroom, while the luxurious master bath features a garden spa tub.
- Ceilings: 9' first floor; 8' second floor.
- Foundation: basement, slab or crawl space. Specify when ordering.
- Related Plans: For a reversed version of this house plan with a three-car garage, see 6539RF.
- Need less space? Save money with house plan 6542RF (2,389 sq. ft) and 6528RF (2,599 sq. ft).

Style: Country, Farmhouse

Total Living Area: 3005

Main Flr.: 1874

2nd Flr.: 1131

Basement Unfinished: 1,874 sq. ft.

Bonus: 459 sq. ft.

Porch, Combined: 706 sq. ft.

Storage: 313 sq. ft.

Total Square Feet: 7,180 sq. ft.

Attached Garage: 2 Car, 823 sq. ft.

Bedrooms: 5

Full Bathrooms: 2

Half Bathrooms: 1

Width: 78'

Depth: 61'

Maximum Ridge Height: 30'

Exterior Walls: 2x4

Ceiling Height:

Main Floor: 9'

2nd Floor: 8'

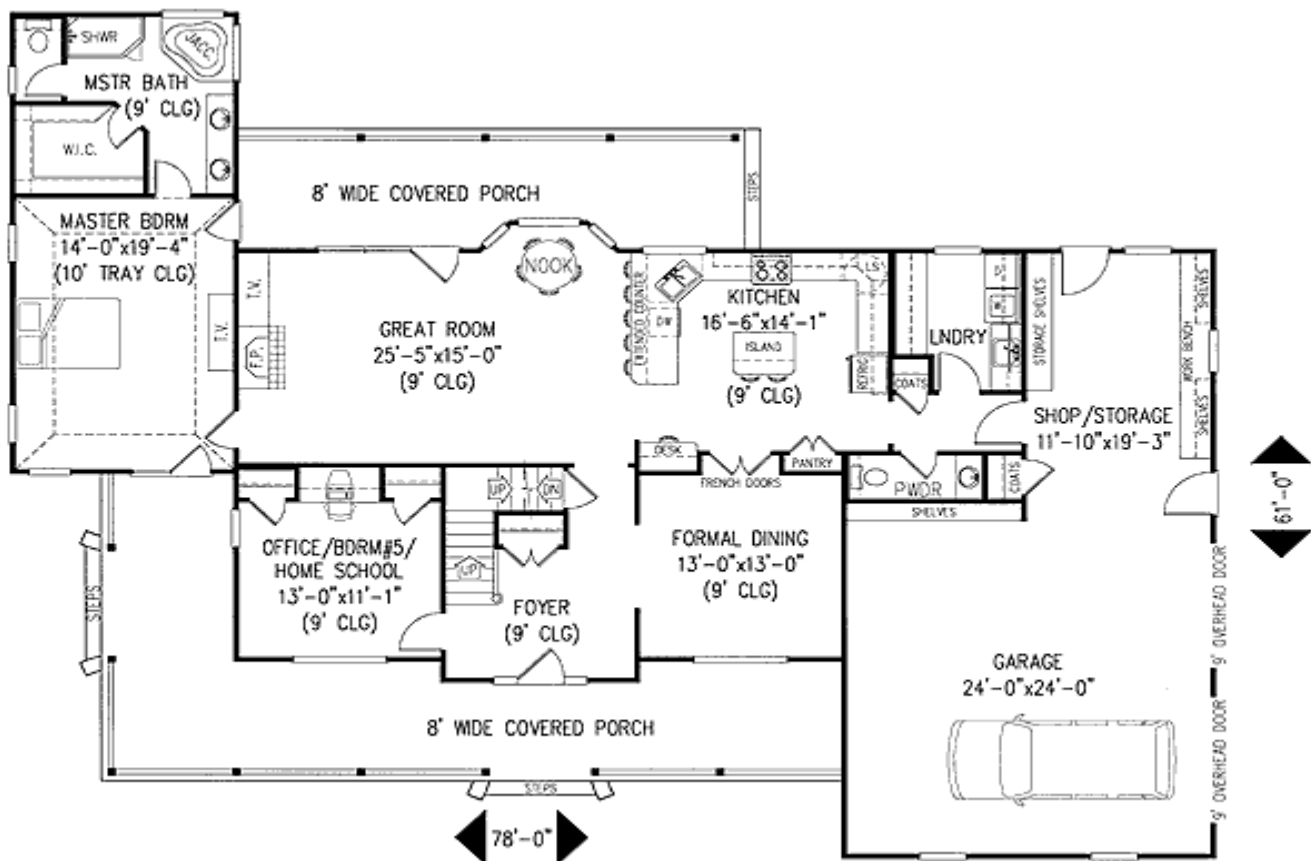
Other: 10' Tray MBR; 9' Basement

Standard Foundations: Slab, Basement, Crawl

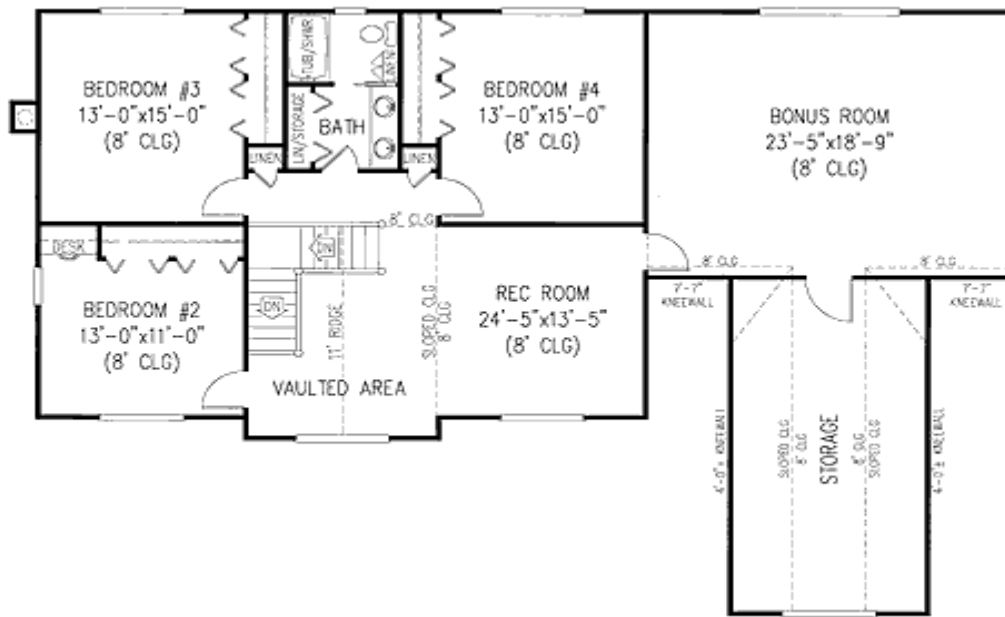
Special Features: 1st Floor Master Suite, Media-Game-Home Theater, Photo Gallery, CAD Available, Den-Office-Library-Study, Bonus Room

One Set	Five Sets	Eight Sets	Reproducible	CAD
\$705	\$725	\$765	\$915	\$1,315

## Main Level

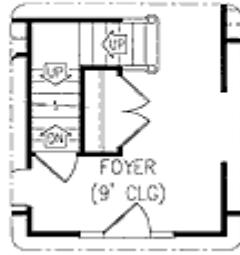


## 2nd Level



Optional

Reverse stair option



# Architectural Designs ...selling quality house plans for over 30 years.

Photo



Rear View

