

Plan W59023ND: Log Simplicity



House plans are Copyright © 2009 by our architects and designers.

- Simplicity best describes this traditional log home plan with covered porches and open truss ceiling. The Great room with fireplace flows into the dining room and kitchen creating an exquisite view from the loft above.
- Access to the grilling porch and eat-at bar in the kitchen make entertaining a breeze.
- The main level master suite has a private half bath with pedestal sink and shares the central bathroom also available to the other main level bedroom.
- Walk up the handcrafted staircase into a loft area with nearby bathroom and two cozy bedrooms for the ultimate sleeping arrangement.
- Ceilings: 8' standard.
- Foundation: Basement, crawl space, daylight basement. Please specify your preference when ordering.
- Related Plan: Want more space and front dormers? See house plan 59030ND.

Style: Log, Mountain

Total Living Area: 1769

Main Flr.: 1276

2nd Flr.: 493

Front Porch: 352 sq. ft.

Rear Porch: 32 sq. ft.

Deck: 112 sq. ft.

Total Square Feet: 2,265 sq. ft.

Bedrooms: 4

Full Bathrooms: 2

Half Bathrooms: 1

Width: 44'

Depth: 45'

Exterior Walls: Log

Ceiling Height:

Main Floor: 8'

Other: 2-Story Great Room

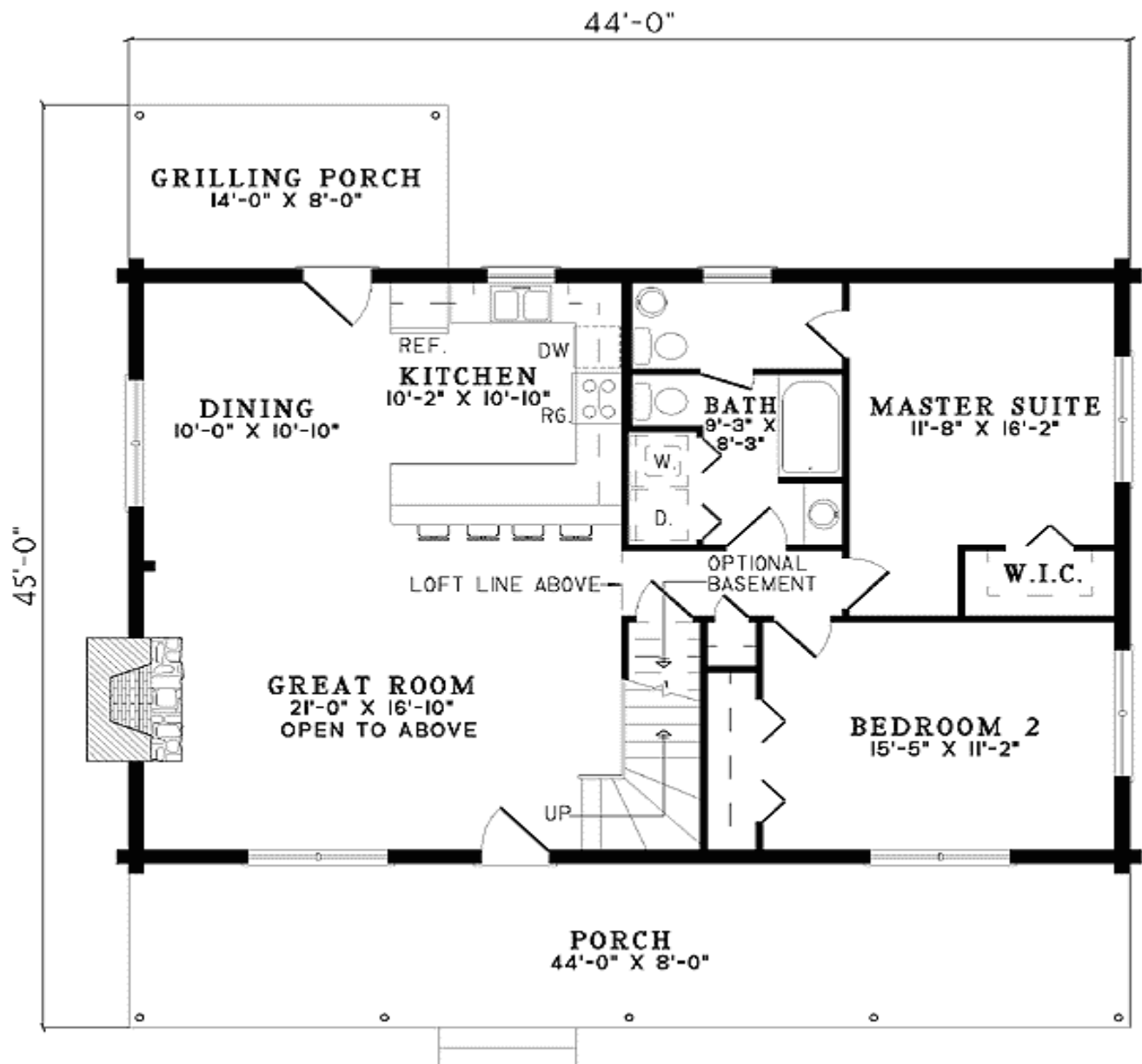
Standard Foundations: Crawl

Alternate Foundations: Walkout (\$250), Basement (\$250)

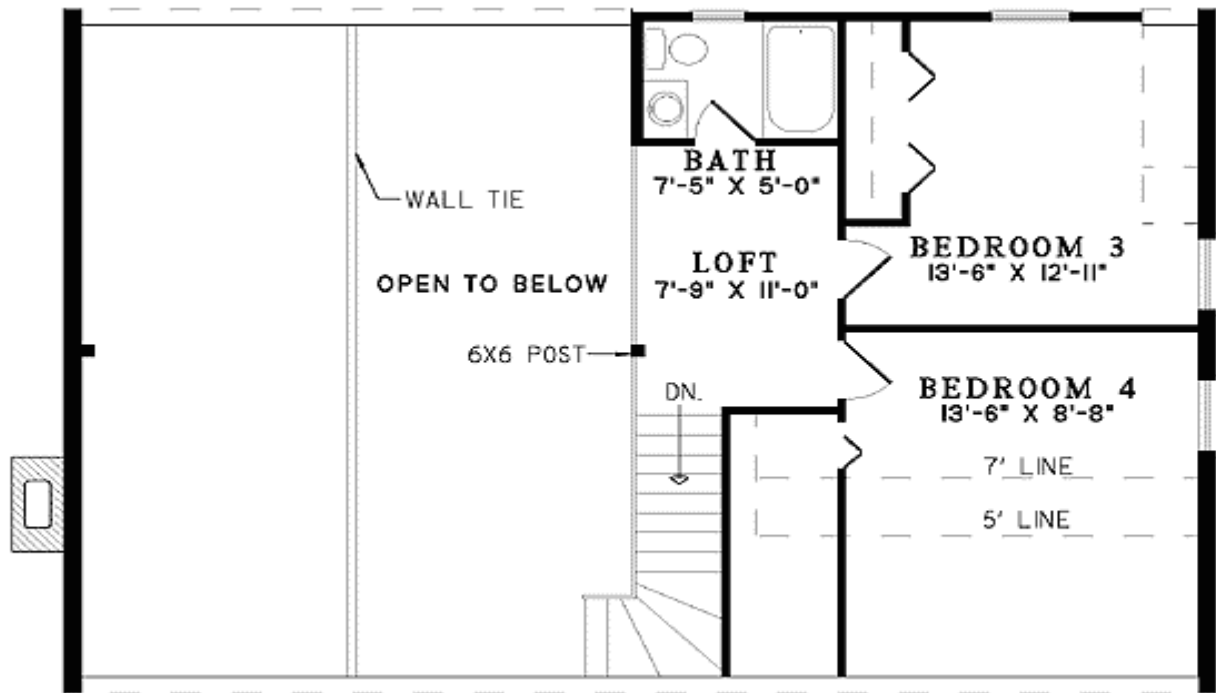
Special Features: PDF, 1st Floor Master Suite, Narrow Lot

One Set	Five Sets	Eight Sets	Reproducible	PDF File	CAD
\$545	\$610	\$640	\$790	\$790	\$1,350

Main Level



2nd Level



Rear View

