

Plan W6476HD: Appealing Craftsman Design



House plans are Copyright © 2009 by our architects and designers.

- Dormers, overhanging eaves and columns on massive stone bases identify this appealing home as a Craftsman design. Inside, the entry foyer and the family room with fireplace rise for two stories, increasing volume and adding light. The formal dining room lies to one side of the foyer.
- Complete with a walk-in pantry and an island with cooktop and snack bar, the kitchen is open to the family room and the bayed nook and abuts the dining room.
- Both the family room and the master suite access the wrap-around deck in back. In the master suite, note the spacious walk-in closet, the corner tub and the separate shower.
- Upstairs, you find two dormered bedrooms and the second full bath. An exterior staircase leads to the bonus room over the garage.
- Related Plans: For a log version of this house plan, see 6473HD.
- For a version with vertical siding, see house plan 6478HD.

Style: Craftsman, Mountain, Vacation

Total Living Area: 2508

Main Flr.: 1799

2nd Flr.: 709

Basement Unfinished: 2,508 sq. ft.

Bonus: 384 sq. ft.

Deck: 542 sq. ft.

Storage: 218 sq. ft.

Total Square Feet: 6,694 sq. ft.

Attached Garage: 2 Car, 534 sq. ft.

Bedrooms: 3

Full Bathrooms: 2

Half Bathrooms: 1

Width: 77'4"

Depth: 41'4"

Maximum Ridge Height: 27'6"

Exterior Walls: 2x6

Ceiling Height:

Main Floor: 10'

2nd Floor: 8'

Other: 18' Foyer & Great Room

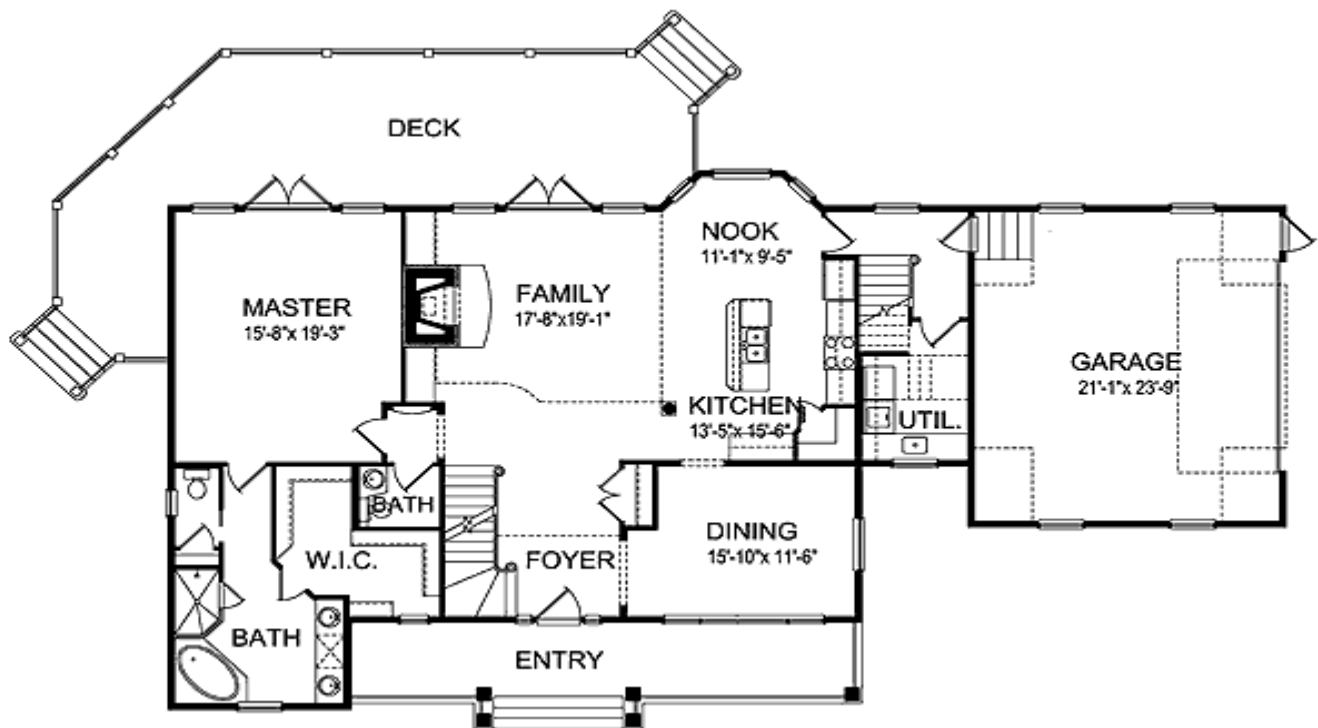
Standard Foundations: Walkout

Alternate Foundations: Slab (\$675), Crawl (\$675)

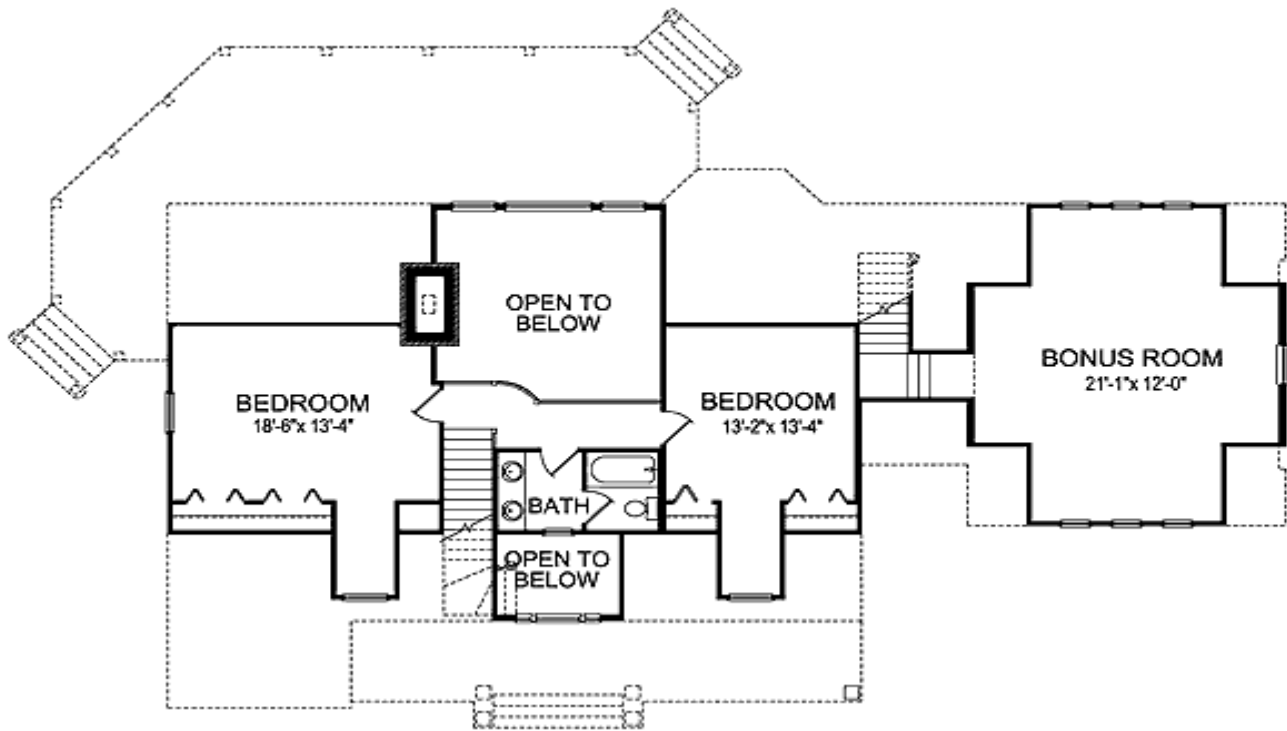
Special Features: CAD Available, PDF, Sloping Lot, 1st Floor Master Suite, Bonus Room, Corner Lot

One Set	Five Sets	Eight Sets	Reproducible	PDF File	CAD
\$650	\$700	\$740	\$850	\$850	\$1,700

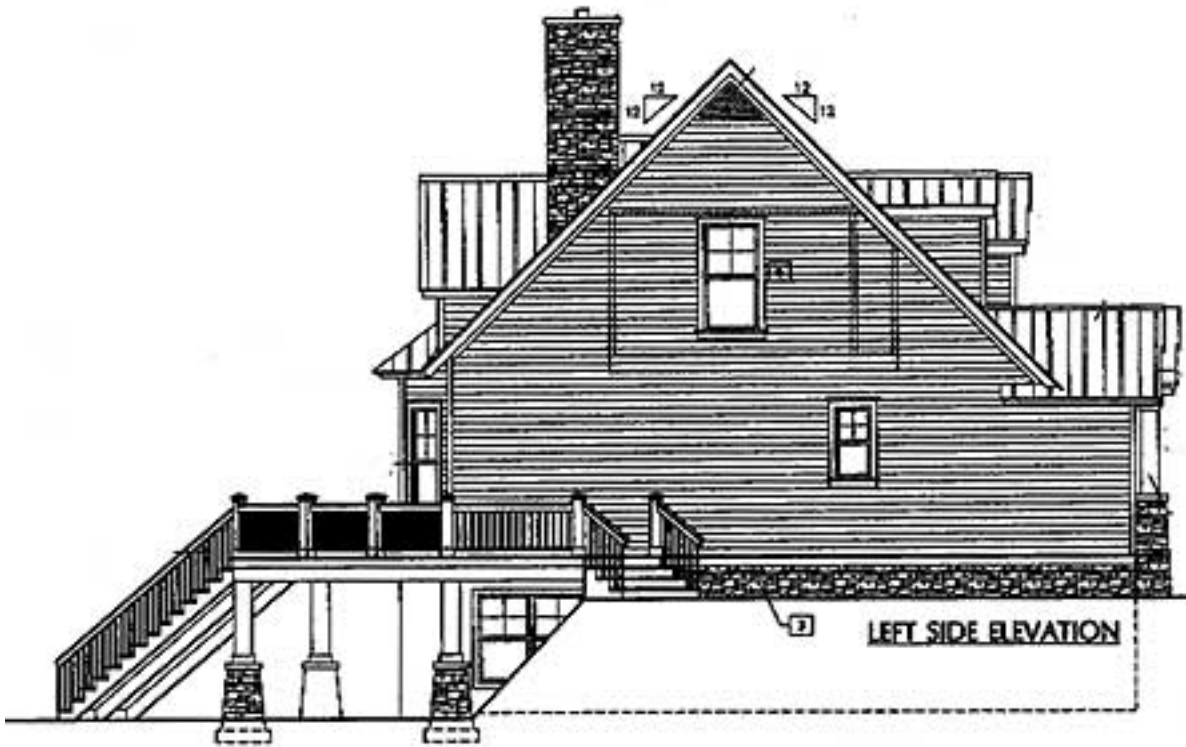
Main Level



2nd Level



Left Side



Right Side



Rear View

