

Architectural Designs ...selling quality house plans for over 30 years.

Plan W5093CZ: His and Her Studies



House plans are Copyright © 2009 by our architects and designers.

- With a study on the first floor and a home office on the second floor, this home provides his and her work space in an organized fashion.
- Large, open spaces highlight both the formal and informal areas. A built-in niche can be found in the dining room that is separated by columns from the great room with its fireplace flanked by more built-ins. Double doors open to the covered veranda, creating a good flow for entertaining.
- Both the caf' and hearth room with fireplace also open to the veranda. This space is shared by the gourmet kitchen with its walk-in pantry.
- A private patio complements the master suite with tray ceiling and sitting area, perfect for relaxing with a cup of coffee and a book.
- Three bedrooms, each with a large walk-in closet, occupy the second floor along with the home office.

Style: Mediterranean, Southwest

Total Living Area: 3280

Main Flr.: 2260

2nd Flr.: 1020

Basement Unfinished: 2,124 sq. ft.

Porch, Combined: 587 sq. ft.

Total Square Feet: 6,876 sq. ft.

Attached Garage: 3 Car, 885 sq. ft.

Bedrooms: 4

Full Bathrooms: 3

Width: 69'6"

Depth: 88'2"

Maximum Ridge Height: 23'11

Exterior Walls: 2x4

Optional Exterior Walls: 2x6 \$150

Ceiling Height:

Main Floor: 9'

Other: 13' Great Room

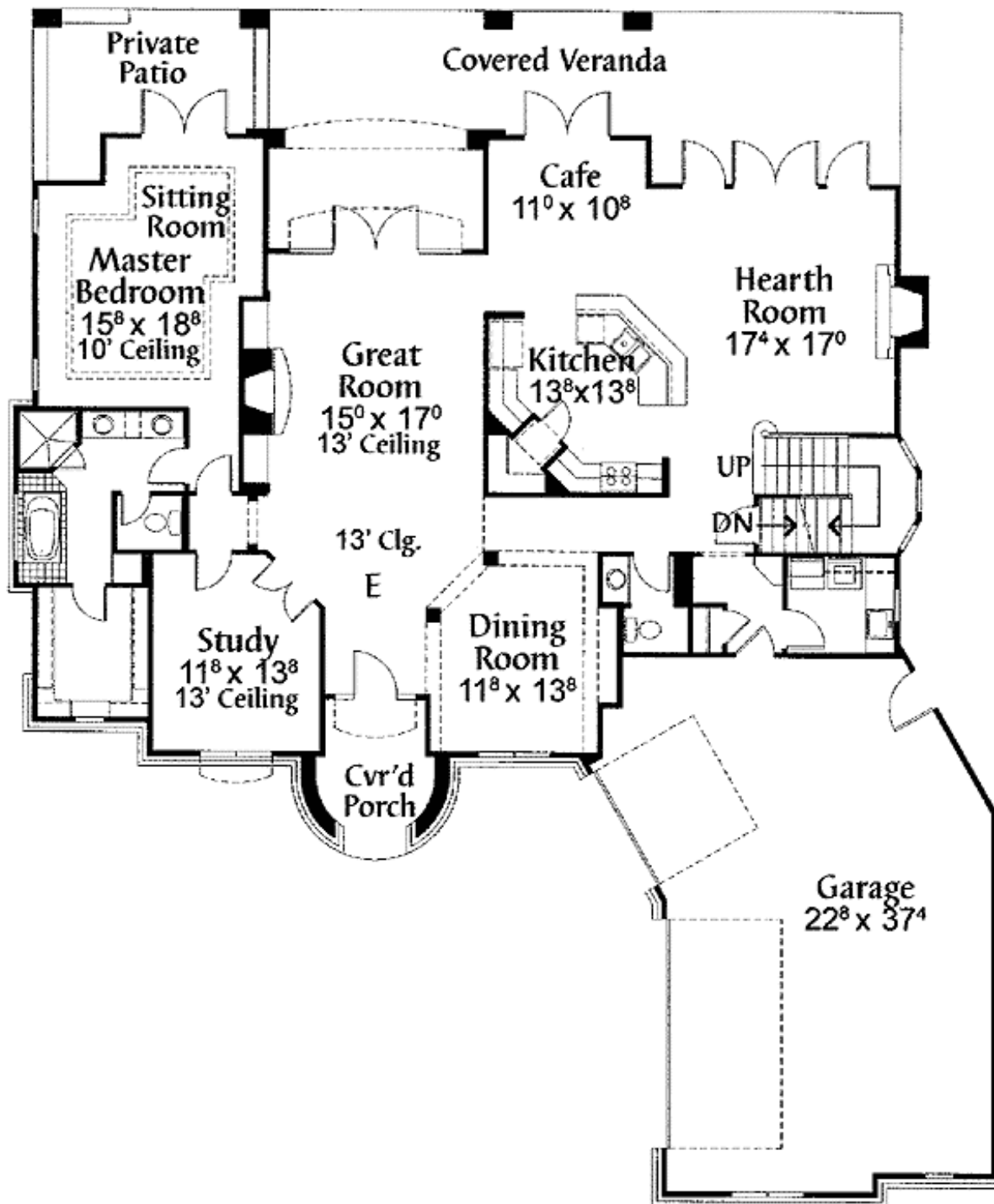
Standard Foundations: Basement

Alternate Foundations: Slab (\$300), Walkout (\$125), Crawl (\$200)

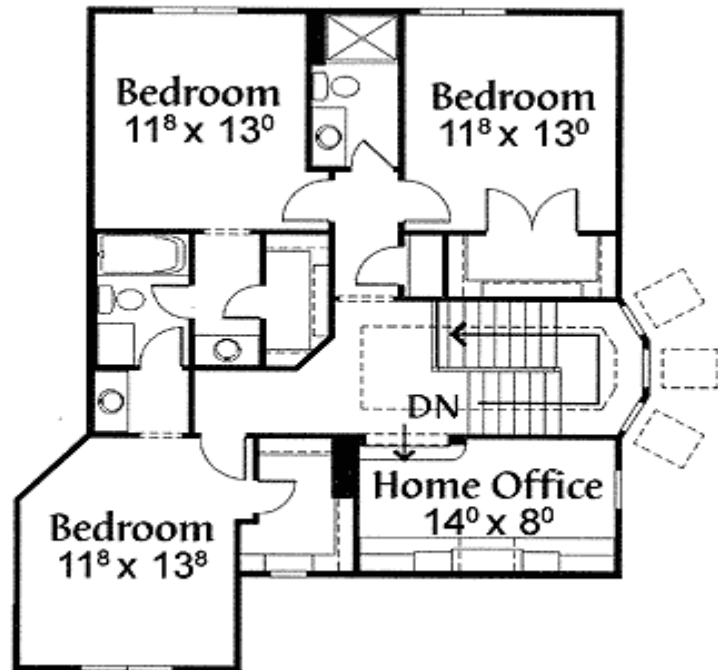
Special Features: 1st Floor Master Suite, CAD Available, Butler Walk-in Pantry, Den-Office-Library-Study, Jack & Jill Bath, MBR Sitting Area

One Set	Five Sets	Eight Sets	Reproducible	CAD
\$795	\$945	\$1,035	\$945	\$2,500

Main Level



2nd Level



Rear View

