

Architectural Designs ...selling quality house plans for over 30 years.

Plan W6929AM: Ideal for Empty Nesters or First-time Buyers



House plans are Copyright © 2009 by our architects and designers.

- Empty nesters and first-time homeowners will enjoy the comfort within this charming design, where a multitude of windows let in the light.
- A vaulted great room equipped with a media center and fireplace anchors the home. A span of windows extends across the great room and dining room, expanding the perceived area and offering access to the covered patio.
- Taking advantage of corner space and including a pantry closet, the open kitchen provides ample cabinets and countertops to store and prepare food.
- The master suite hosts a large bath with a spa tub and a walk-in closet. The second bath serves the other bedroom and the rest of the house, including a den off the foyer.
- The garage has space for storage, a workshop or a third vehicle.
- Ceilings: 9' standard.
- Related Plans: For alternate elevations, see these house plans - 6933AM and 69016AM.

Style: Craftsman

Total Living Area: 1728

Main Flr.: 1728

Total Square Feet: 2,332 sq. ft.

Attached Garage: 2 Car, 604 sq. ft.

Bedrooms: 2

Full Bathrooms: 2

Width: 55'

Depth: 48'

Maximum Ridge Height: 25'

Exterior Walls: 2x6

Ceiling Height:

Main Floor: 9'

Other: 13' Vaulted Great Room

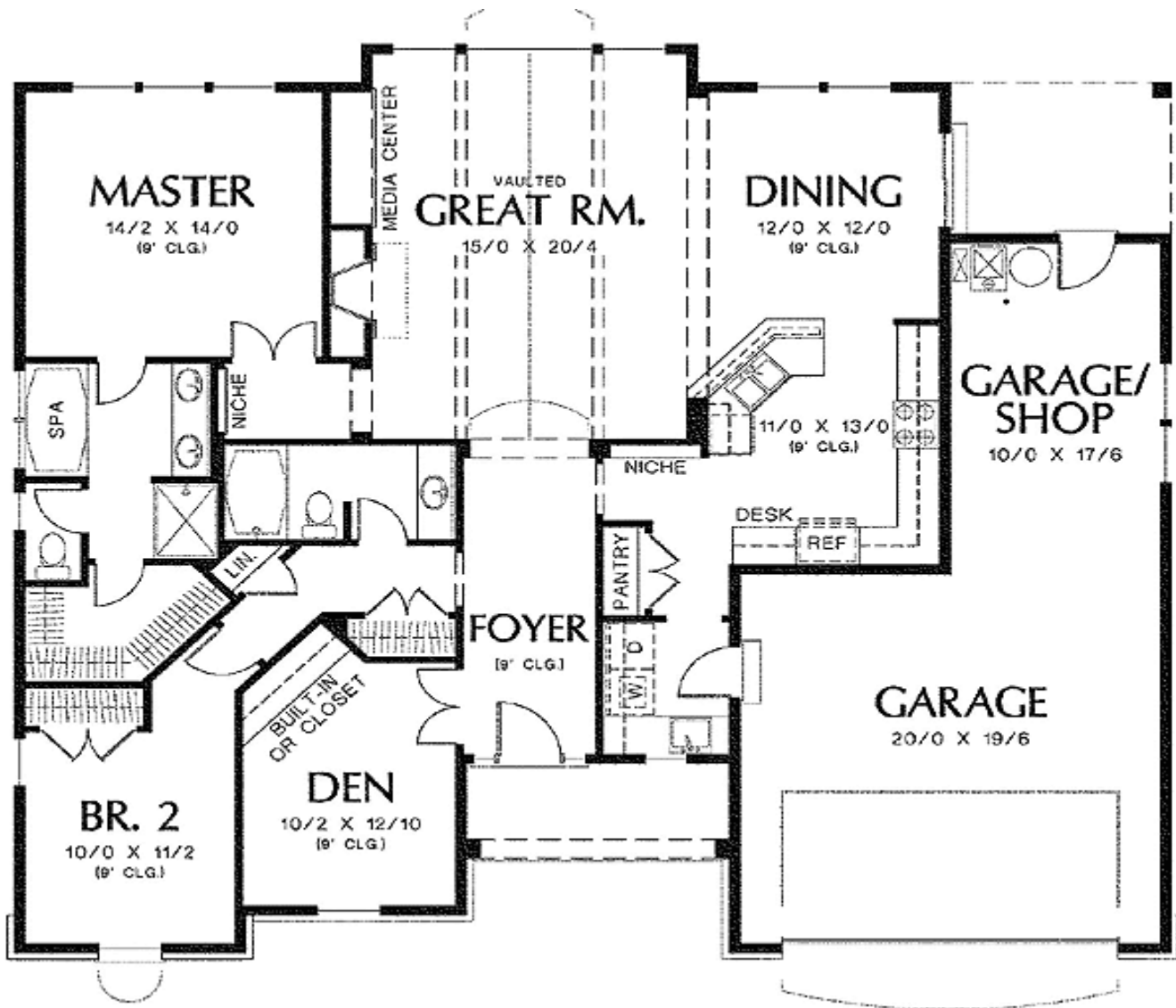
Standard Foundations: Crawl

Alternate Foundations: Slab (\$95), Basement (\$225)

Special Features: 1st Floor Master Suite, PDF, Den-Office-Library-Study, Photo Gallery, CAD Available

| | | | | | |
|---------|-----------|------------|--------------|----------|---------|
| One Set | Five Sets | Eight Sets | Reproducible | PDF File | CAD |
| \$525 | \$595 | \$650 | \$850 | \$850 | \$1,450 |

Main Level



Architectural Designs ...selling quality house plans for over 30 years.

Photo



Photo #2



Architectural Designs ...selling quality house plans for over 30 years.

Photo #3



Elevation #2



Rear View

