

Architectural Designs ...selling quality house plans for over 30 years.

Plan W32205AA



House plans are Copyright © 2009 by our architects and designers.

Style: Florida, Luxury, Mediterranean, Spanish

Total Living Area: 5536

Main Flr.: 2924

2nd Flr.: 2612

Front Porch: 88 sq. ft.

Balcony/Veranda: 347 sq. ft.

Covered Patio: 460 sq. ft.

Total Square Feet: 7,007 sq. ft.

Attached Garage: 3 Car, 576 sq. ft.

Bedrooms: 5

Full Bathrooms: 5+

Half Bathrooms: 1

Width: 63'10"

Depth: 64'11"

Maximum Ridge Height: 30'

Exterior Walls: Block

Ceiling Height:

Main Floor: 9'4" -10'

2nd Floor: 10'

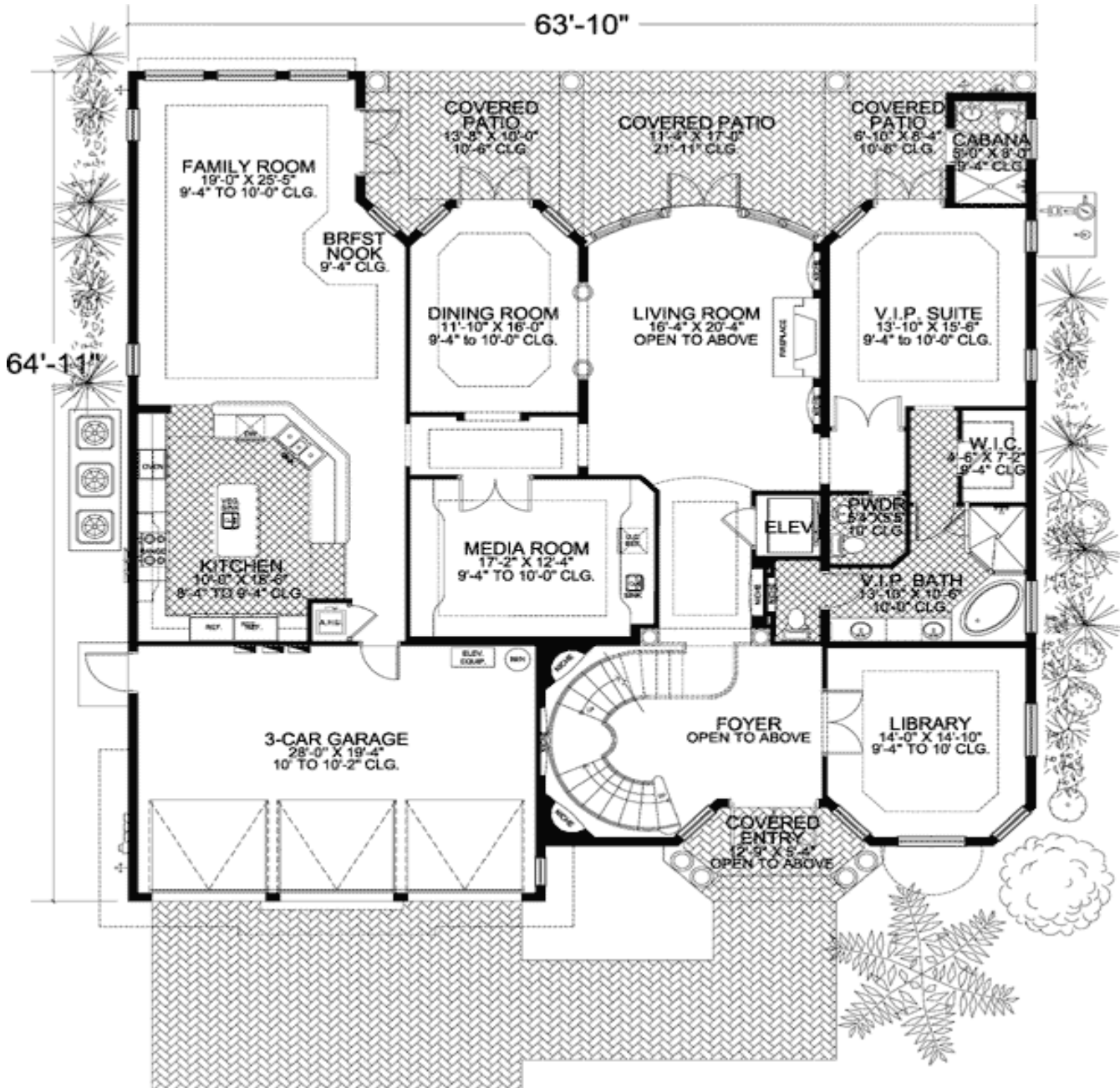
Other: 23'3" Foyer & Living Room; 9'4"-10' Media, Dining, Library & VIP Suite; 8'4"-9'4" Kitchen; 10'-11'4" Tray MBR; 10'10'8" Bedrooms

Standard Foundations: Slab

Special Features: Elevator, PDF, Den-Office-Library-Study, Media-Game-Home Theater, CAD Available

One Set	Five Sets	Eight Sets	Reproducible	PDF File	CAD
\$1,200	\$1,400	\$1,550	\$1,700	\$1,700	\$2,050

Main Level



Rear View

