

# Architectural Designs ...selling quality house plans for over 30 years.

Plan W5065CZ



House plans are Copyright © 2009 by our architects and designers.

Style: Luxury, Traditional

Total Living Area: 5113

Main Flr.: 2355

2nd Flr.: 735

Lower Level: 2023

Basement Unfinished: 372 sq. ft.

Porch, Combined: 151 sq. ft.

Deck: 298 sq. ft.

Total Square Feet: 7,010 sq. ft.

Attached Garage: 3 Car, 1,076 sq. ft.

Bedrooms: 6

Full Bathrooms: 4

Half Bathrooms: 1

Width: 75'6"

Depth: 68'6"

Maximum Ridge Height: 27'3

Exterior Walls: 2x4

Optional Exterior Walls: 2x6 \$150

Ceiling Height:

Main Floor: 10'

2nd Floor: 9'

Other: 2-Story Great Room

Standard Foundations: Walkout, Basement

Alternate Foundations: Slab (\$300), Crawl (\$200)

Special Features: Sloping Lot, Bonus Room, CAD Available

One Set  
\$995

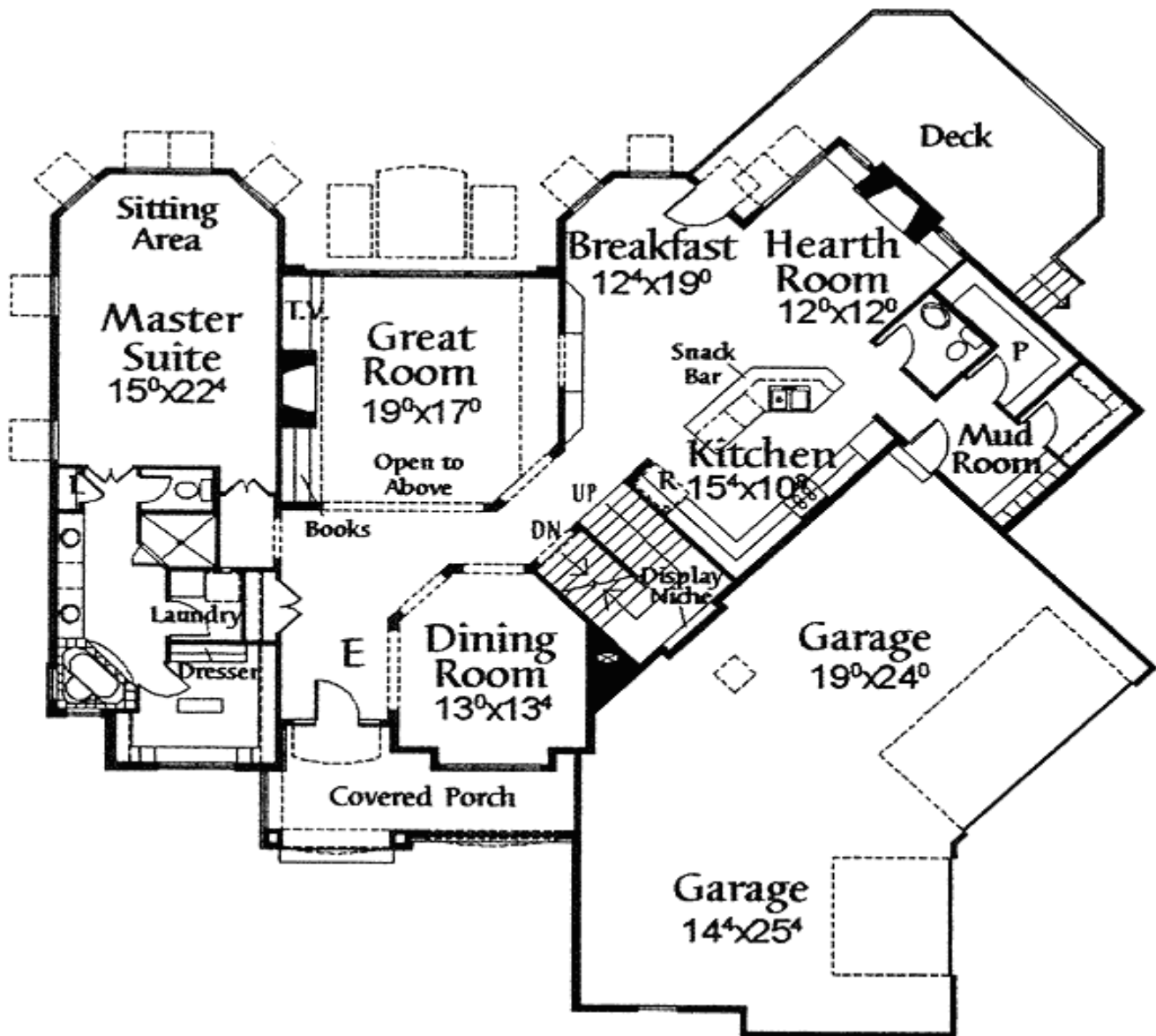
Five Sets  
\$1,145

Eight Sets  
\$1,235

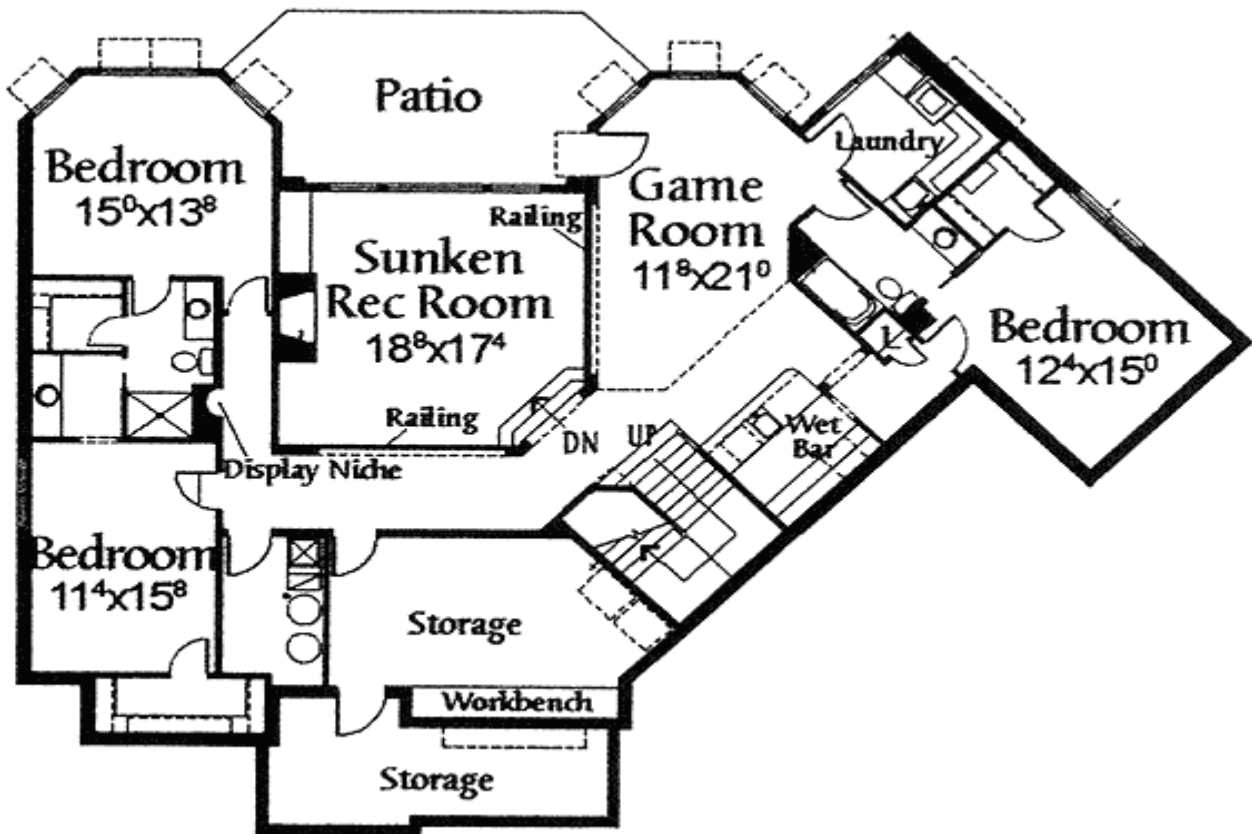
Reproducible  
\$1,145

CAD  
\$2,500

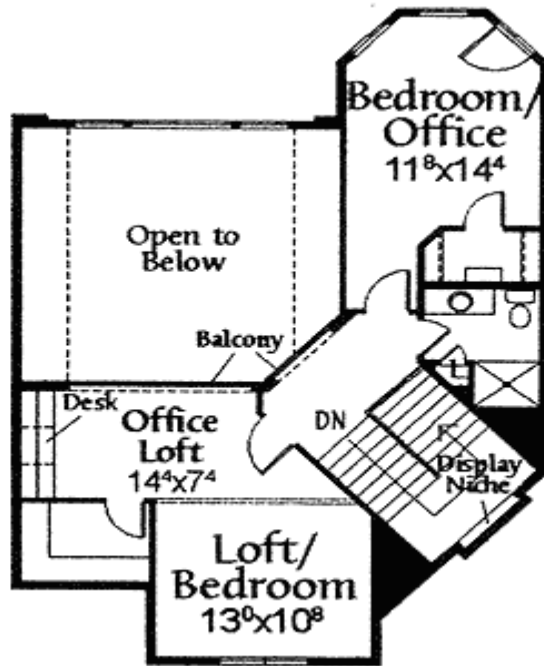
## Main Level



2nd Level



## Lower Level



Rear View

