

# Architectural Designs ...selling quality house plans for over 30 years.

Plan W21225DR: Added Bonus - Detached Garage Plans Included



House plans are Copyright © 2009 by our architects and designers.

- A classic look and a well-balanced design make this a very attractive and interesting house plan. As an added bonus, the plans come with plans for a matching detached garage.
- A coat closet in the foyer helps reduce clutter.
- You'll find a fireplace in the family room. Windows on two walls help open up the space.
- A solarium-like breakfast nook is created by a subtle bumpout by the kitchen in the back.
- Two bedrooms share a bath with spa tub and shower. The master bedroom features a walk-in closet.

Style: Canadian, European, Metric

Total Living Area: 1072

Main Flr.: 1072

Basement Unfinished: 1,072 sq. ft.

Front Porch: 110 sq. ft.

Total Square Feet: 2,599 sq. ft.

Detached Garage: 1 Car, 345 sq. ft.

Bedrooms: 2

Full Bathrooms: 1

Width: 32'

Depth: 42'

Maximum Ridge Height: 25'7"

Exterior Walls: 2x6

Ceiling Height:

    Main Floor: 8'

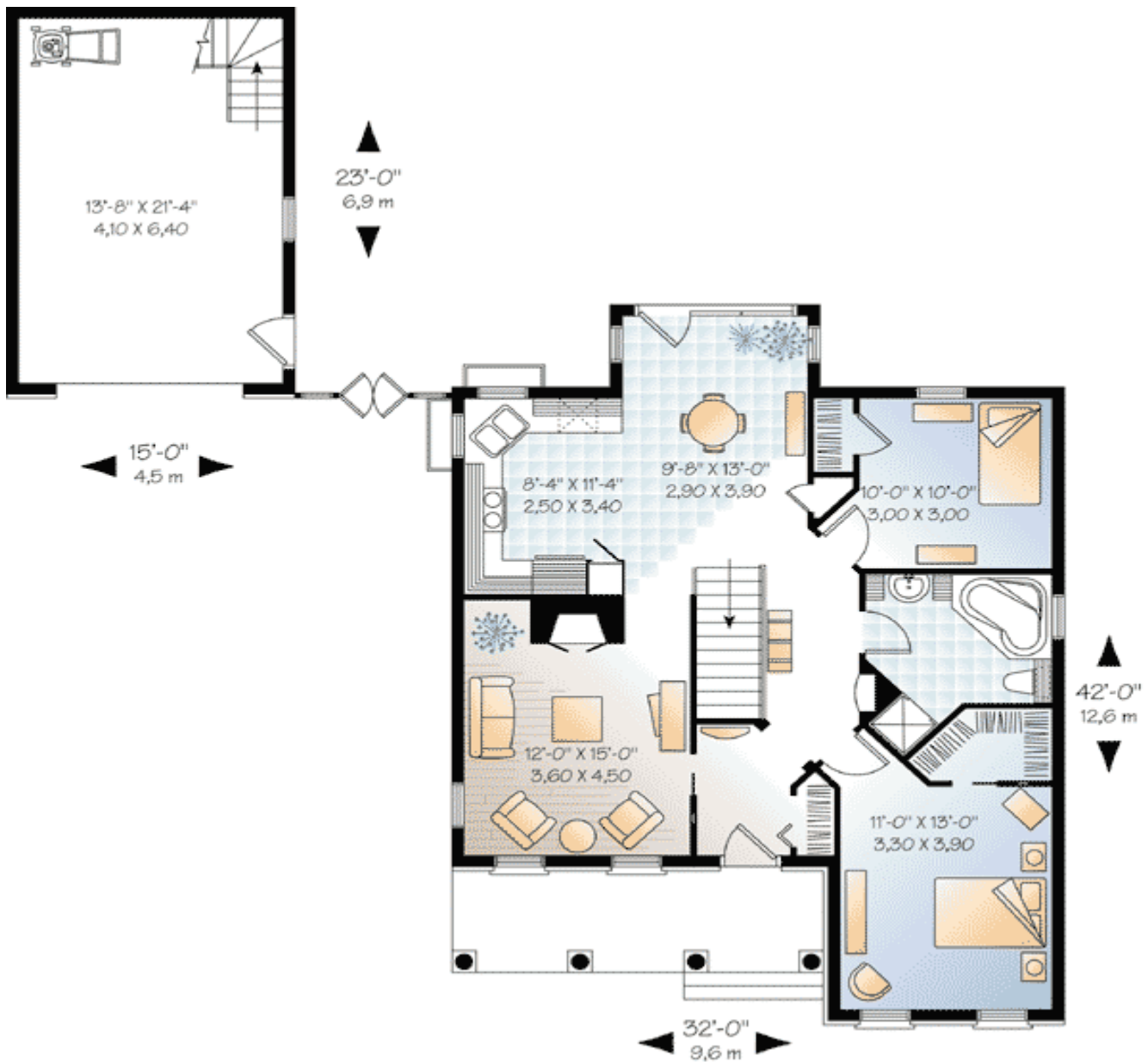
Standard Foundations: Basement

Alternate Foundations: Slab (\$295), Crawl (\$295)

Special Features: Narrow Lot, Photo Gallery, CAD Available, PDF

One Set	Five Sets	Eight Sets	Reproducible	PDF File	CAD
\$499	\$539	\$569	\$749	\$749	\$1,430

## Main Level



Elevation #2



Rear View

