

Plan W6510RF: Den or Home Office



House plans are Copyright © 2009 by our architects and designers.

- This compact ranch features a vaulted great room and master bedroom that open up the space and make the home feel larger than its actual size.
- Just off the great room, bedroom two could easily become a study or home office.
- Nicely designed, the U-shaped kitchen offers a pantry closet and a large eating bar that separates it from the great room. Conveniently at hand are a laundry room and access to the two-car garage. Both the garage and the great room open to the backyard.
- The master suite includes a good-sized walk-in closet and a private bath. Bedroom three and another full bath complete the design.
- Foundation options: basement, slab or crawl space. Specify when ordering.

Style: Ranch

Total Living Area: 1200

Main Flr.: 1200

Entry: 14 sq. ft.

Total Square Feet: 1,698 sq. ft.

Attached Garage: 2 Car, 484 sq. ft.

Bedrooms: 3

Full Bathrooms: 2

Width: 60'

Depth: 35'

Maximum Ridge Height: 16'2"

Exterior Walls: 2x4

Ceiling Height:

Main Floor: 8'

Other: 11'9" Vaulted Great Room Great Room; 9'7" Vaulted MBR

Standard Foundations: Slab, Basement, Crawl

Special Features: 1st Floor Master Suite, CAD Available

One Set  
\$540

Five Sets  
\$600

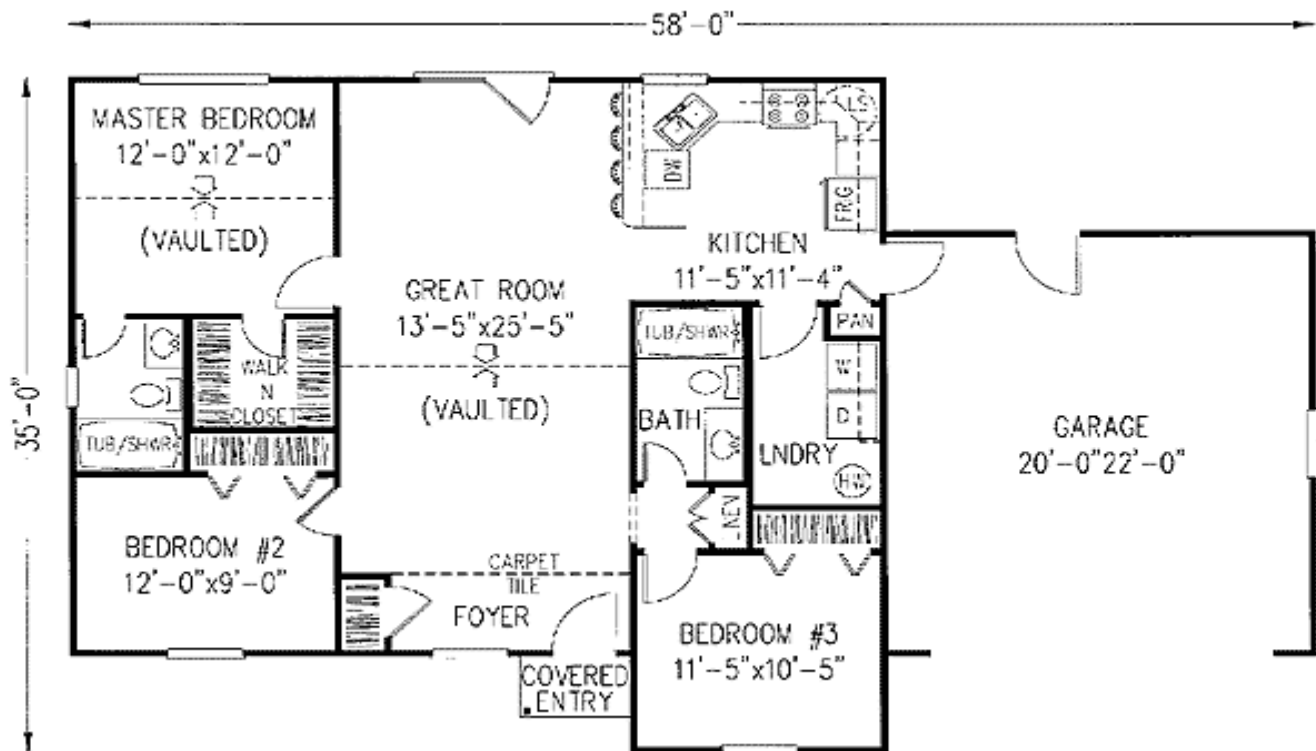
Eight Sets  
\$640

Reproducible  
\$790

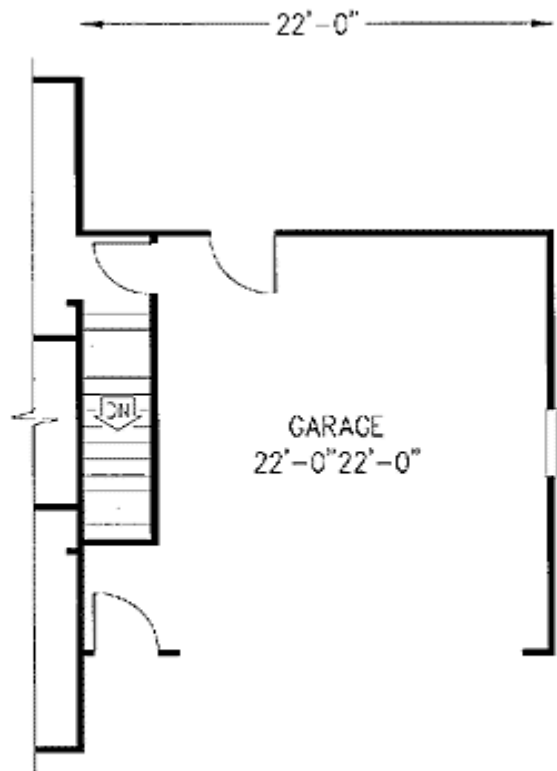
CAD  
\$1,190

# Architectural Designs ...selling quality house plans for over 30 years.

## Main Level



Optional



FIRST FLOOR PLAN (W/ STAIRS)