

# Architectural Designs ...selling quality house plans for over 30 years.

Plan W59030ND: Charming Front Porch



House plans are Copyright © 2009 by our architects and designers.

- This log home plan features a front porch perfect for enjoying your surroundings.
- An open floor plan allows viewing the Great room fireplace from both the dining room and the kitchen adding.
- French doors in the dining room lead to a grilling porch with a handy eat-at bar to use as a buffet. Just off the kitchen you'll find a convenient mud room.
- The master suite is privately located on the main level and is complete with a soothing whirlpool tub.
- The upstairs loft area leads to two additional bedrooms with ample closet space plenty of natural light.
- Ceilings: 8' standard.
- Foundation: Basement, crawl space, daylight basement. Please specify your preference when ordering.
- Related Plan: Want a simpler look? See house plan 59023ND which does not have front dormers.

Style: Log, Mountain

Total Living Area: 1810

Main Flr.: 1276

2nd Flr.: 534

Front Porch: 352 sq. ft.

Rear Porch: 96 sq. ft.

Total Square Feet: 2,258 sq. ft.

Bedrooms: 3

Full Bathrooms: 2

Half Bathrooms: 1

Width: 44'

Depth: 45'

Exterior Walls: Log

Ceiling Height:

Main Floor: 8'

Other: Vaulted Great Room

Standard Foundations: Crawl

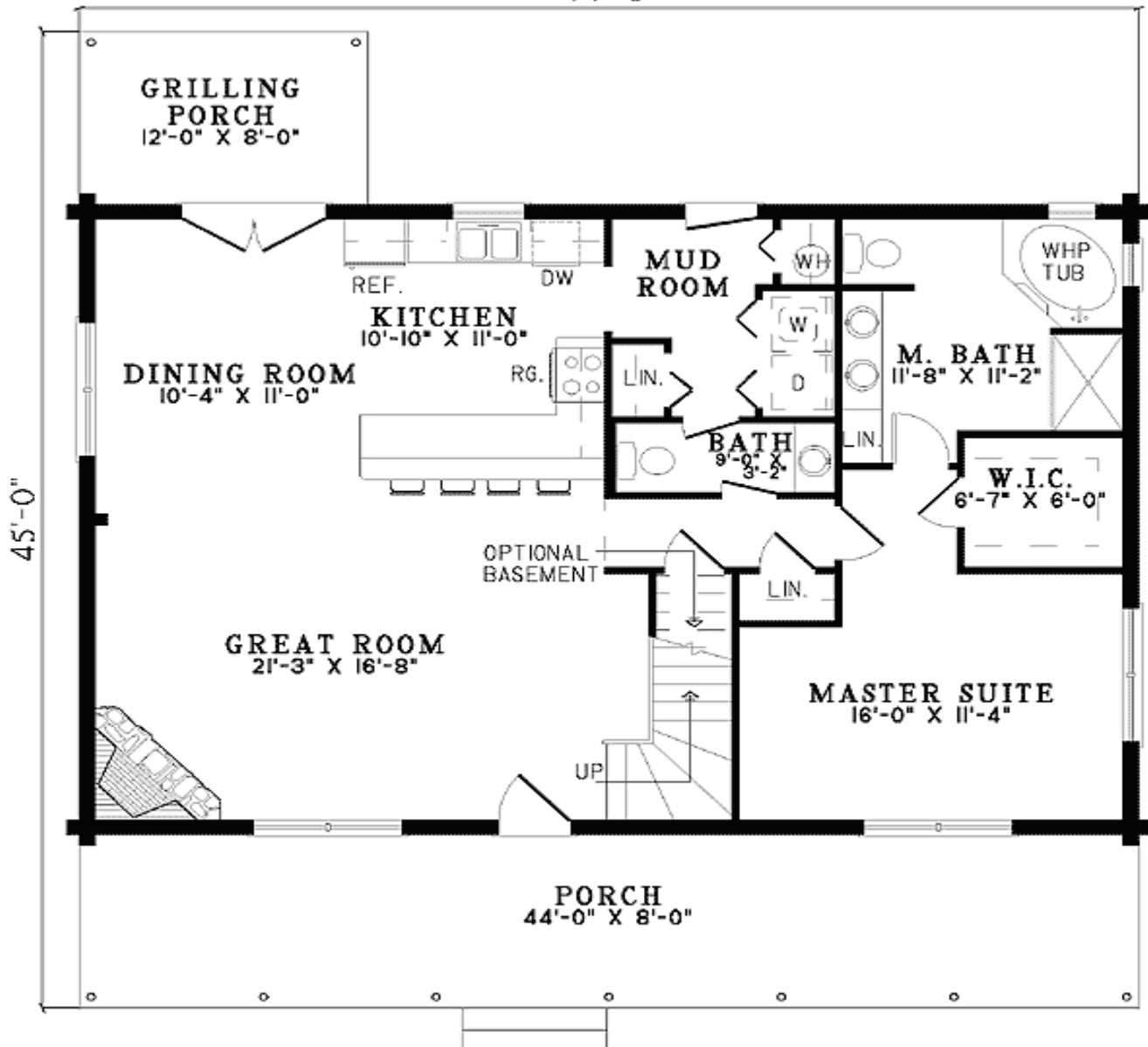
Alternate Foundations: Walkout (\$250), Basement (\$250)

Special Features: PDF, 1st Floor Master Suite, Narrow Lot

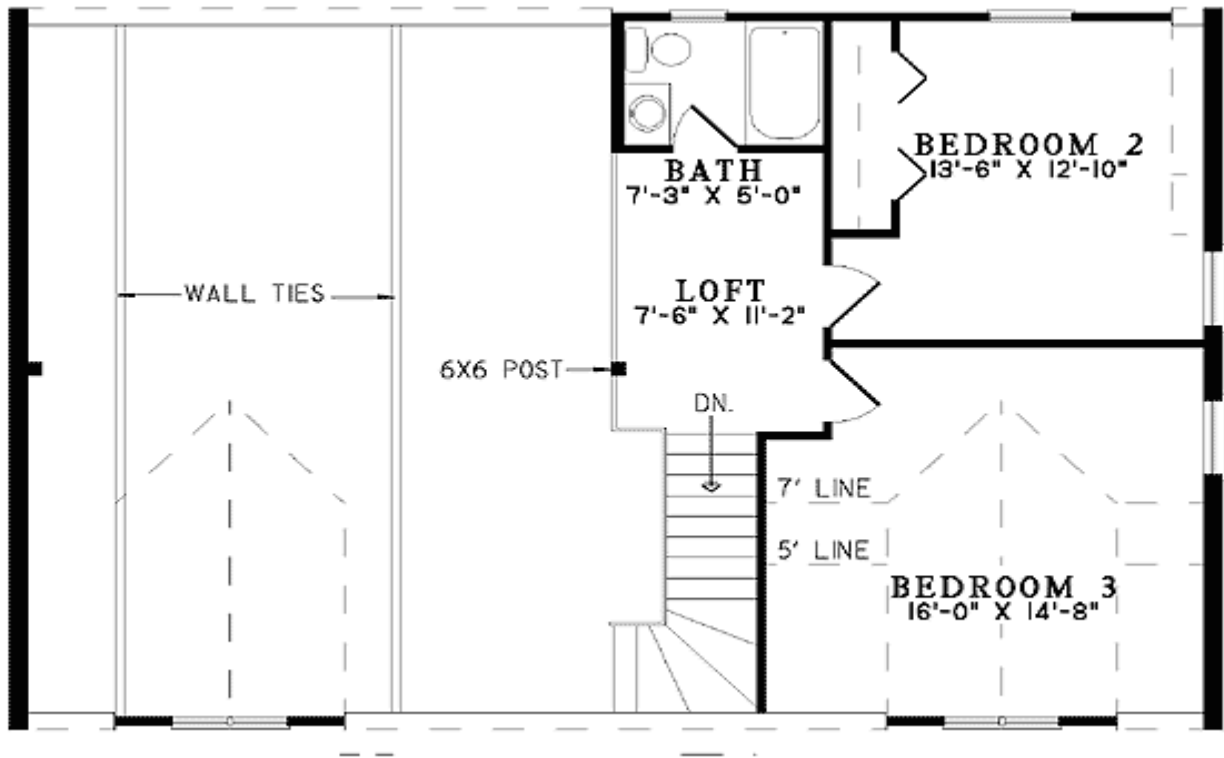
One Set	Five Sets	Eight Sets	Reproducible	PDF File	CAD
\$545	\$610	\$640	\$790	\$790	\$1,350

## Main Level

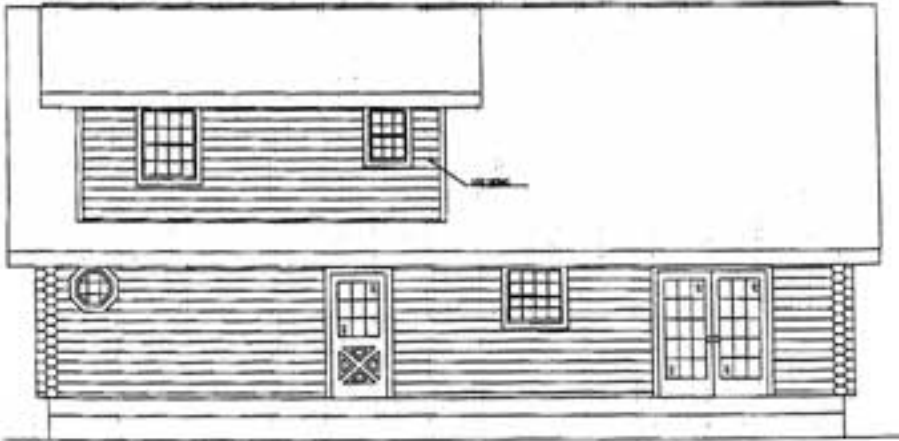
44'-0"



2nd Level



Sides/Rear



**Rear elevation**



**Left elevation**



**Right elevation**