

Architectural Designs ...selling quality house plans for over 30 years.

Plan W5940ND: Traditional Design with Garage and Workshop



House plans are Copyright © 2009 by our architects and designers.

- This traditional design, perfect for a wide or corner lot, includes a three-bay garage with a generous workshop area, a storage area and a convenient half bath.
- Inside, the split-bedroom design places the master suite in its own wing. Twin walk-in closets, a whirlpool tub and a glass-door shower are featured in the master bath.
- Built-in bookshelves, a bayed breakfast nook and an open kitchen are highlights of the expansive living area.
- In back, a covered porch extends living space to the outdoors.
- Ceilings: 8' standard; 9' boxed in great room, dining room and master bedroom.
- Related Plans: For a Tuscan exterior, see 59857ND.
- For basement stair location, see house plan 59564ND (siding) or 59431ND (brick).
- For this plan in siding, see 59432ND.

Style: Traditional

Total Living Area: 2096

Main Flr.: 2096

Front Porch: 85 sq. ft.

Rear Porch: 397 sq. ft.

Total Square Feet: 3,552 sq. ft.

Attached Garage: 2 Car, 974 sq. ft.

Bedrooms: 3

Full Bathrooms: 2

Half Bathrooms: 1

Width: 69'2"

Depth: 74'10"

Maximum Ridge Height: 20'4"

Exterior Walls: 2x4

Ceiling Height:

Main Floor: 8'

Standard Foundations: Slab, Crawl

Alternate Foundations: Walkout (\$250), Basement (\$250)

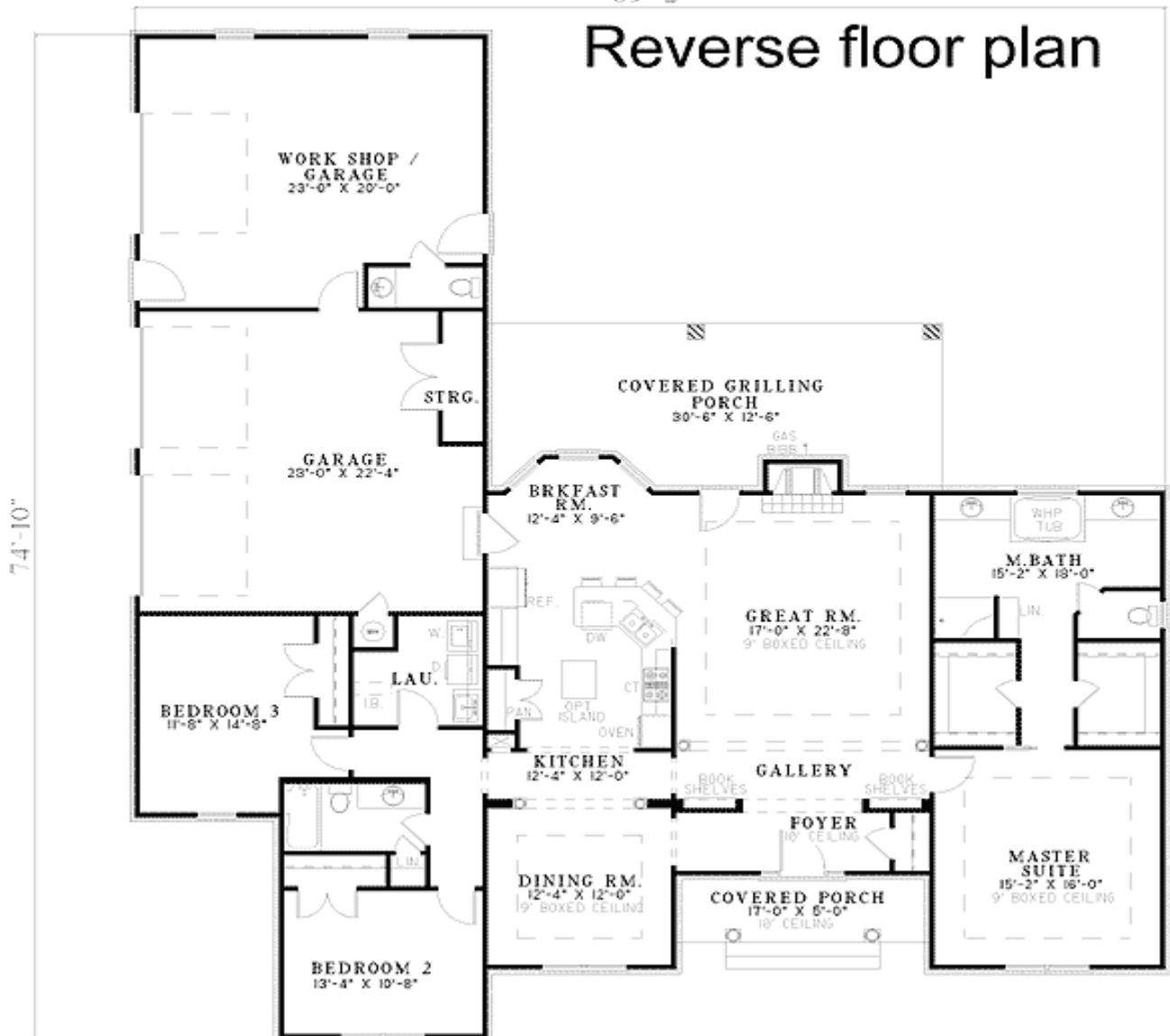
Special Features: PDF, Sloping Lot, CAD Available

One Set	Five Sets	Eight Sets	Reproducible	PDF File	CAD
\$635	\$750	\$805	\$1,060	\$1,060	\$1,800

Other

69'-2"

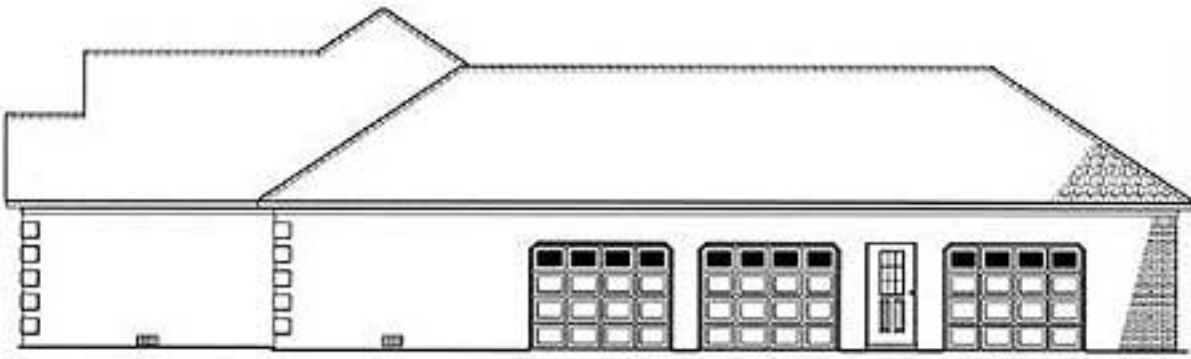
Reverse floor plan



Left Side



Right Side



Rear View

